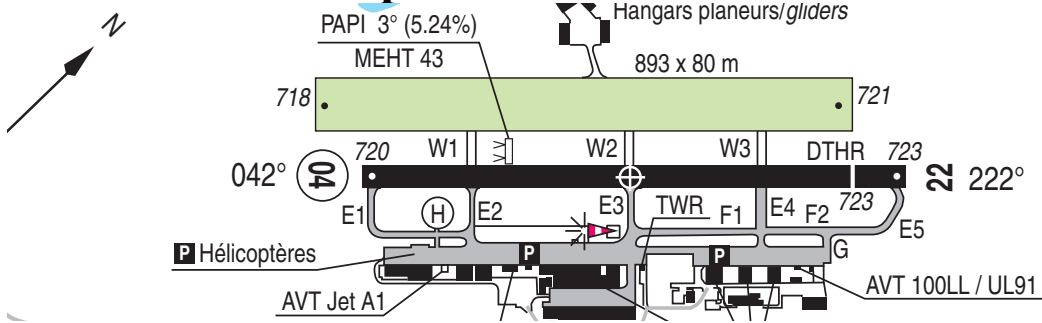


## VFR Departure from LFLG with F-GTPT



- Pilot: Le Versoud Ground, Robin F-GTPT, good morning.
- Ground: Robin F-GTPT, Le Versoud Ground, Pass your message
- Pilot: Le Versoud Ground, Robin F-GTPT At Club Apron, VFR Mountain flight, sector Alpe d'Huez, and San Sorlin, 1 POB, duration 1 hour, Request taxi to runway 04 with Charlie
- Ground: F-PT, taxi to holding point E1 Runway 04, Contact Tower when ready on 121.0
- Pilot: Taxiing to Holding Point E1 Runway 04, Will contact tower when ready on 121.0, Robin F-PT, .....
- Pilot: Le Versoud Tower, Robin F-GTPT at Holding point E1 Runway 04 ready for departure
- Tower: F-PT, maintain position, will call you back.
- Pilot Will maintain position, F-PT
- Tower: Robin F-PT, line up and wait Runway 04, aircraft crossing Runway 04 at W2.
- Pilot: Line up and wait on Runway 04, Robin F-PT
- Tower: Robin F-PT, Runway 04 cleared for takeoff, wind calm, report leaving frequency
- Pilot: Taking off on Runway 04, will report leaving frequency at SW, Robin F-PT

Pilot: Le Versoud Tower, Robin F-PT, SW 4000 feet  
climbing to leave your frequency  
Tower: F-PT, roger, have a good flight.

### **VFR Arrival at LFLG with F-GTPT**

Pilot: Le Versoud Tower, Robin F-GTPT, Return from  
Alpes d'Huez with Delta

Tower: Robin TPT, Le Versoud Tower

Pilot: Request overhead entry 3500 feet direct  
downwind, Robin TPT

Tower: Robin TPT, overhead entry approved

Pilot: downwind runway 04, Robin TPT

Tower: Robin TPT number two, report final

Pilot: number two, report final, Robin TPT

Pilot: on final runway 04, Robin TPT

Tower: Robin TPT, cleared for landing runway 04.

Pilot: Cleared for landing RWY 04, Robin TPT

Pilot: Runway 04 vacated at E3, Robin TPT

Tower: Robin TPT Contact ground at 121.655.

Pilot: Le Versoud Ground, Robin TPT at E3 parking  
club.

Tower: Robin TPT, taxi to parking club

Pilot: Robin TPT at parking, to leave your frequency  
Tower: Robin TPT, Leave frequency