



Aéro Club Dauphiné
Aviation English Master Class
Session 3

James Crowley
and the ACD FCL055 team

<http://crowley-coutaz.fr/jlc/FCL055>

Session Planning (*aspirational*)



9 November	The FCL055 Rating, Course structure, Presentation of Participants, Information Resources, Sample Practice Flight
16 November	Flight Crews, ATC Overview, Numbers, ATIS Structure, Sample Flight Briefing.
23 November	Flight Briefings by Crews 1 to 7
30 November	Flight Briefings Crews 8 and 9, Taxi and Departure Clearances, Sample Clearance and Taxi Script
07 December	Taxi Scripts, Pattern Terminology, Pattern Reporting, Sample Script
14 December	Pattern Practice, Weather Charts, Sample Departure scripts.
21 December	Departure Scripts, Air spaces and airways, Cross Country Phraseology,
28 December	?
04 January	Enroute Radio Practice, Inflight Emergencies
11 January	Inflight Emergency Practice, ATIS practice, Arrival and Approach
18 January	Arrival Briefings, Landing, Refueling and Taxi to Parking.
25 January	Class Debriefings, FCL 055 VFR test preparation.

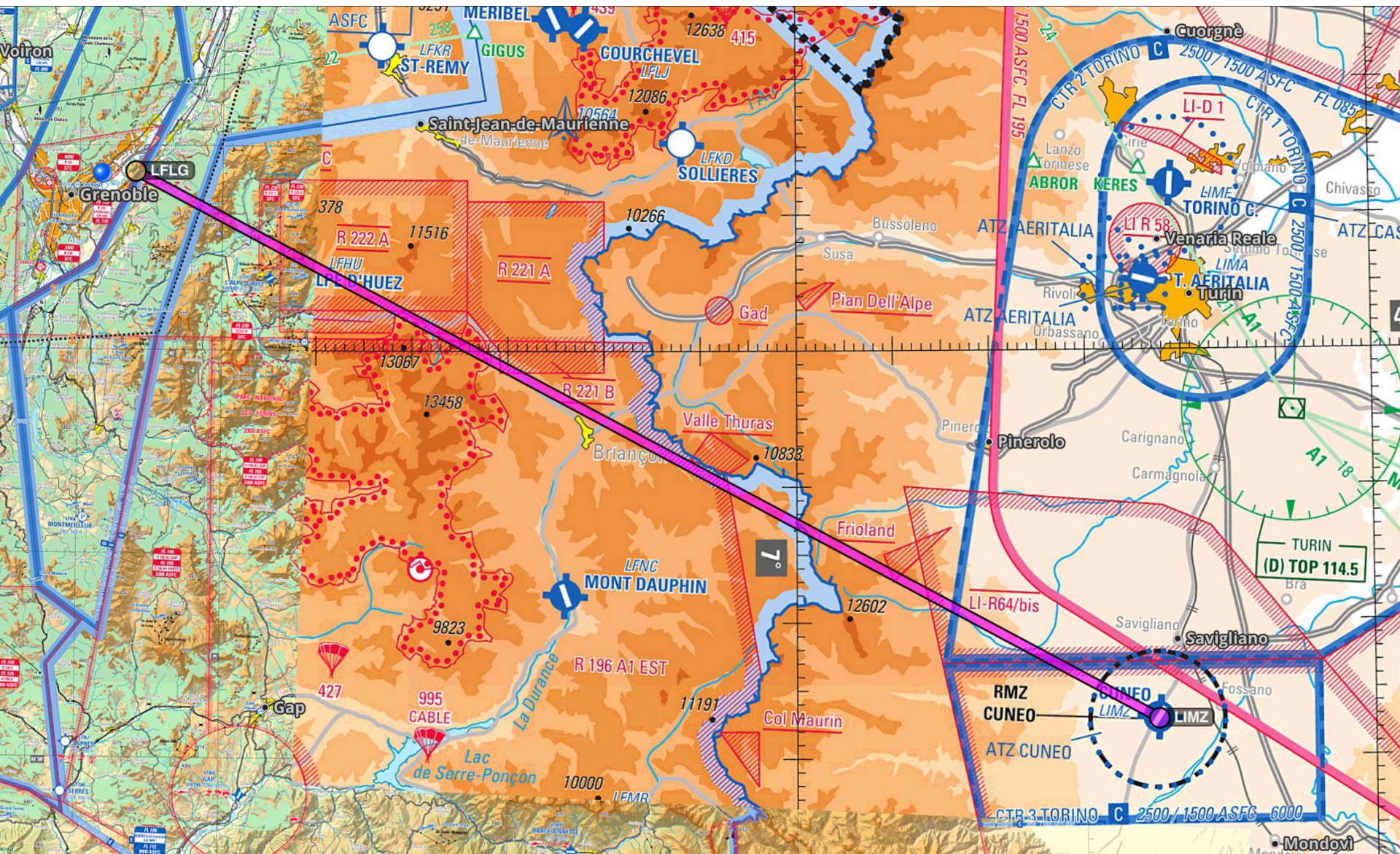
ACD MasterClass Flight Crews



Crew	Names	Aircraft	Type	Departure	Destination
1	Gabriel Faivre, Jean-Laurent Philippe	F-HGPC	DR455	LFLG	LIMZ
2	Christian Charrier Johan Malaquin	F-HGPC	DR435	LFAC	EGSU
3	Francois Zanier, Frederic Dumas	F-GNXT	DR455	LFLS	LSZA
4	Jean-Louis Monin, Roman Dieuguillot	F-GSRE	DR460	LFLS	LSGL
5	Thomas Calmant, François-Karim Laben	F-HBFO	DR435	LFLS	LSGE
6	Jean-Yves Larnaudie, Alejandro López	F-HGPC	DR455	LFLS	LIPZ
7	Augustin Chatain, Maxime Pelissier?	F-GNXT	DR455	LFLS	LSGS
8	Sebastien Roy, Alexis Mermet	F-HGPC	DR455	LFLG	LIMZ
9	Sebastien Monges, Simon Lang	F-HGPC	DR455	LELL	LFLG

Crew 1: LFLG – LIMZ with F-HGPC

Gabriel Faivre, Jean-Laurent Philippe



Let's have an espresso in Cuneo !
F-HGPC from LFLG to LIMZ

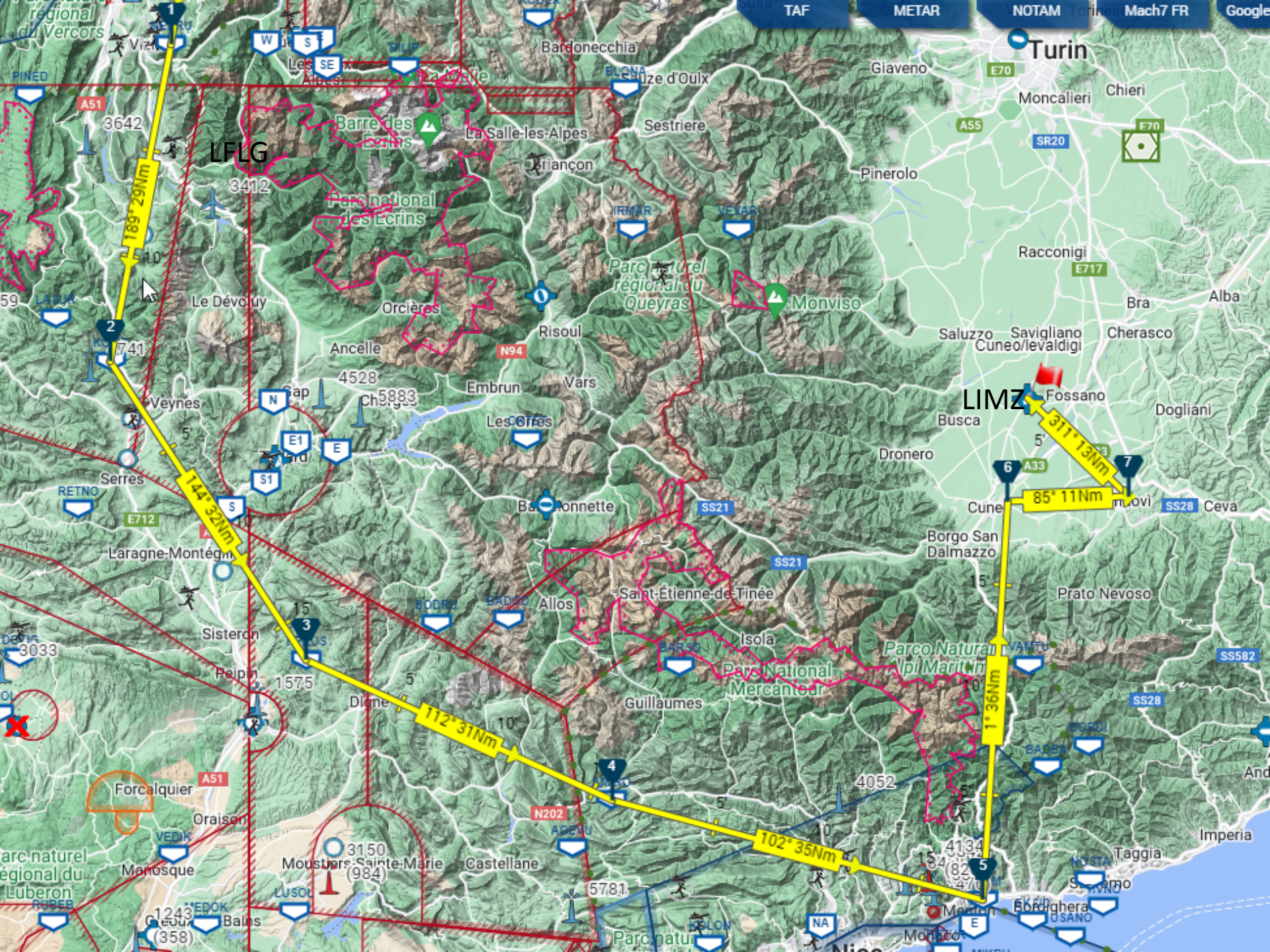
Gabriel Faivre

Jean-Laurent Philippe

F-HGPC



Electric trim control  PTT



ATERRISSAGE A VUE

Visual landing

Ouvert à la CAP
Public air traffic
09 SEP 2021

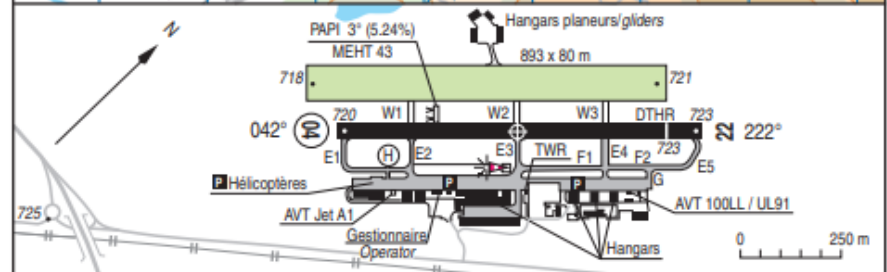
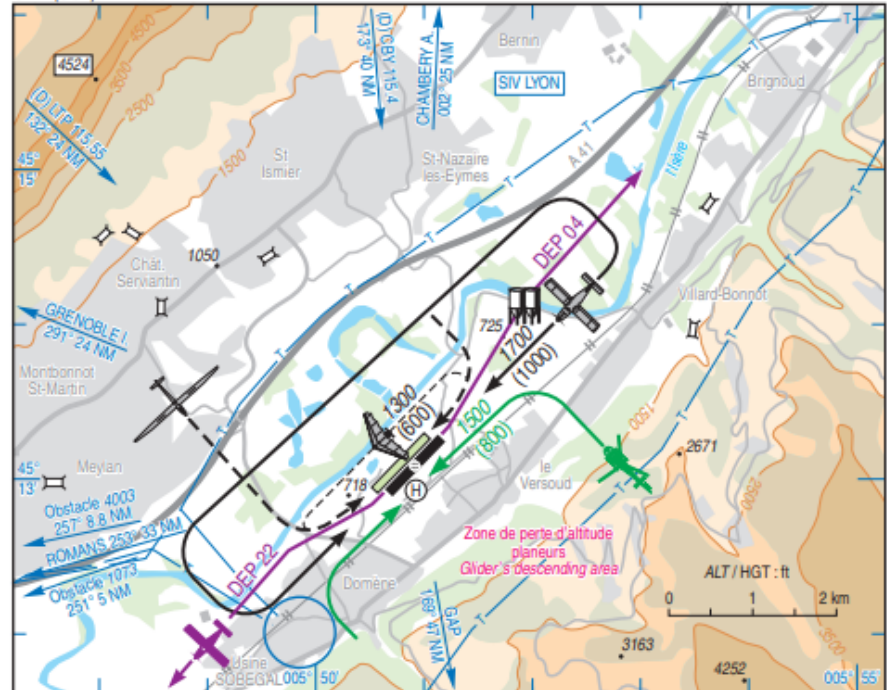
GRENOBLE LE VERSOUD

AD 2 LFLG ATT 01



ALT AD : 724 (26 hPa)	LFLG VAR : 1°E (15)
LAT : 45 13 05 N	
LONG : 005 50 55 E	

ATIS 125.230 ☎ 04 85 88 10 17
APP : NIL
TWR : 121.000
GND (SOL) : 121.655

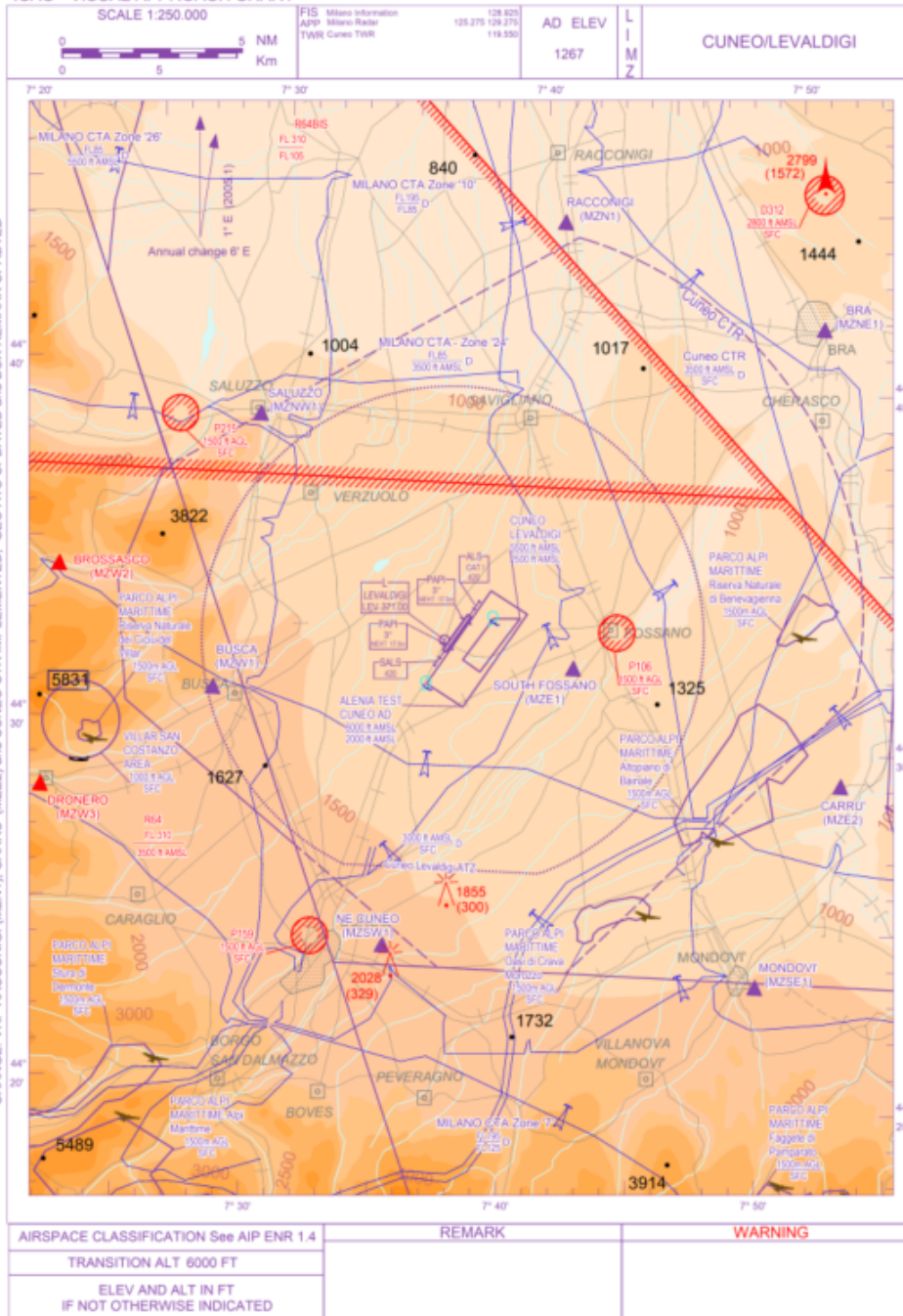


RWY	QFU	Dimensions Dimension	Nature Surface	Résistance Strength	TODA	ASDA	LDA
04	042	900 x 30	Revêtue	6.3 TRSI	900	900	900
22	222		Paved		900	900	815

Aides lumineuses : NIL

Lighting aids : NIL

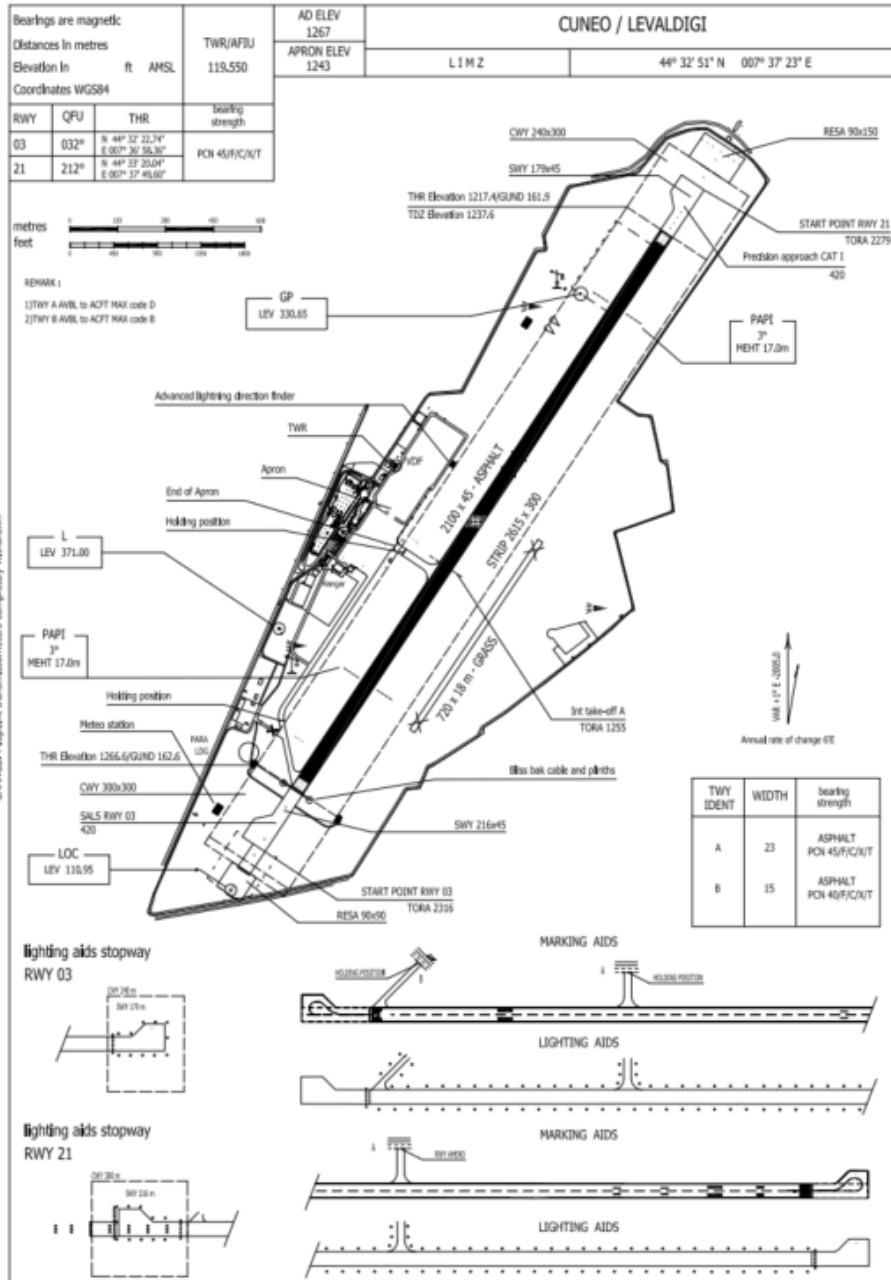
ICAO - VISUAL APPROACH CHART



CHANGE: VRP RACCONIGI (MZN1), CARRU (MZE2) and CUNEO CTR IMPLEMENTED. GEO ATS UPDATED and BOX REMARK UPDATED

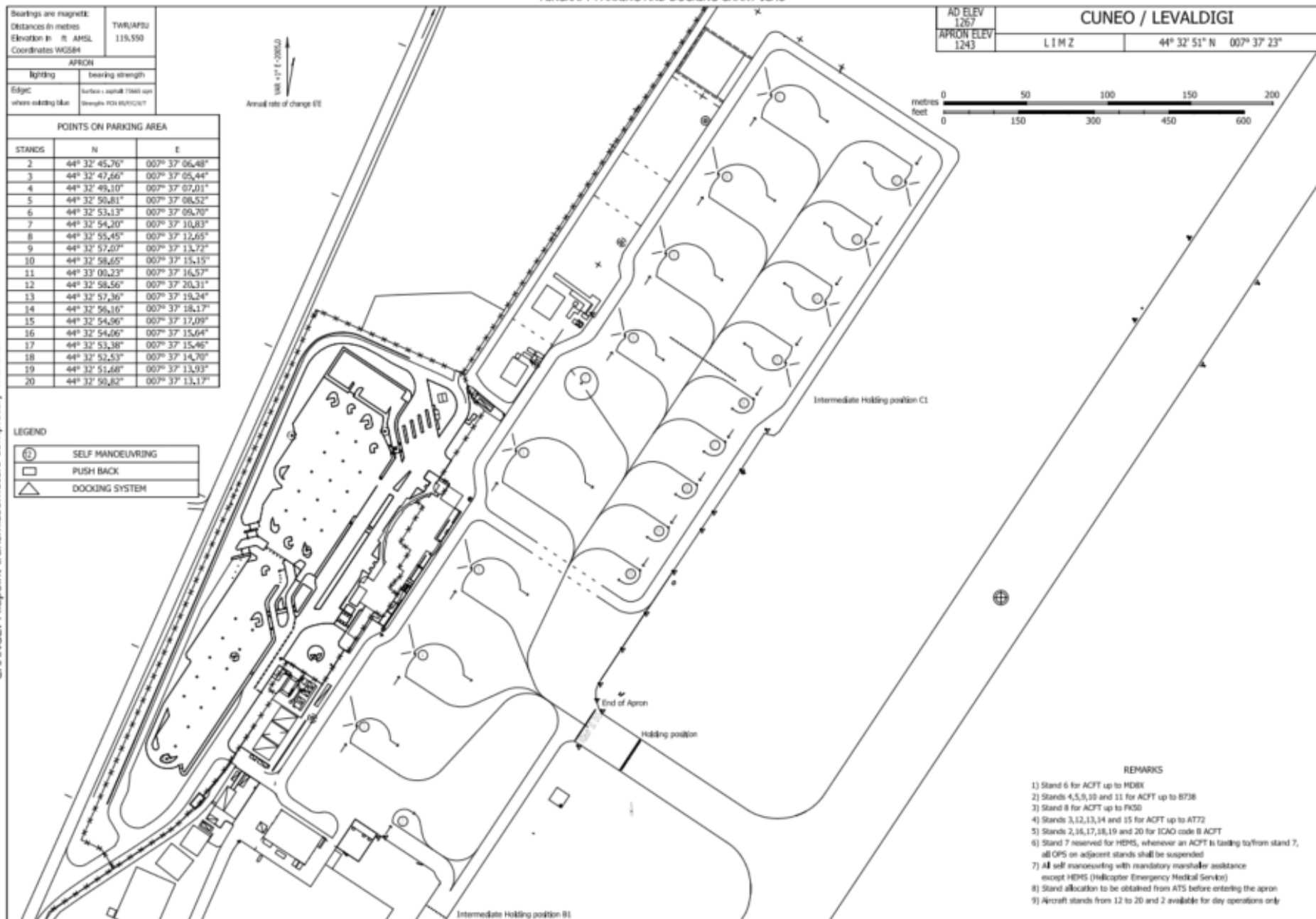
AIRSPACE CLASSIFICATION See AIP ENR 1.4	REMARK	WARNING
TRANSITION ALT 6000 FT		
ELEV AND ALT IN FT IF NOT OTHERWISE INDICATED		

AERODROME CHART ICAO



CHANGE: Mipoint transmitters completely withdrawn

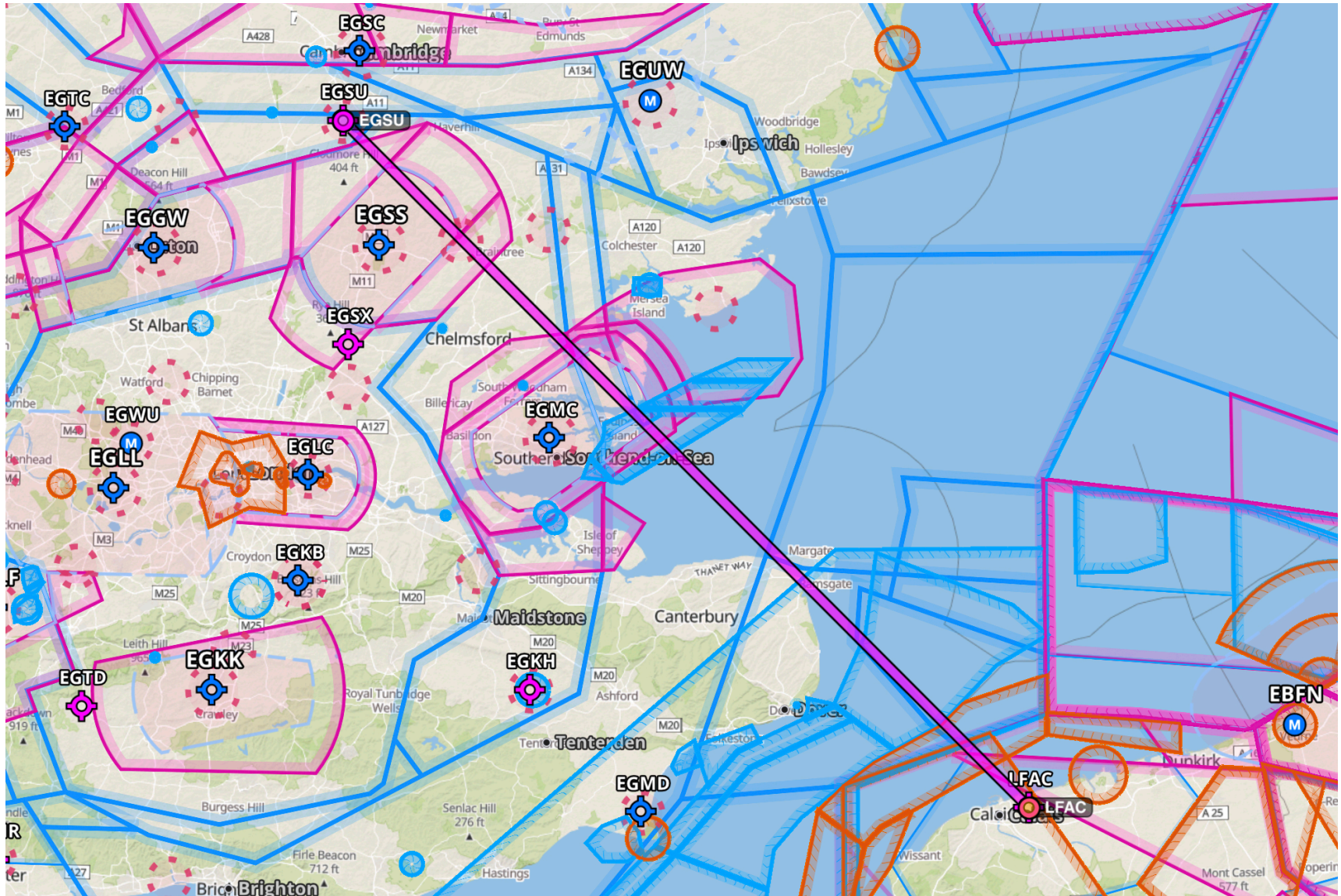
AIRCRAFT PARKING AND DOCKING CHART-ICAO





Crew 2: LFAC – EGSU with F-HCEN

Frank Minair, Christian Charrier, Johan Malaquin





PRE-FLIGHT BRIEFING – CREW 2

LFAC (CALAIS) - EGSU (DUXFORD)

CHRISTIAN CHARRIER – FRANK MINAIR – JOHAN MALAQUIN

LFAC TO EGSU WITH F-HGPC



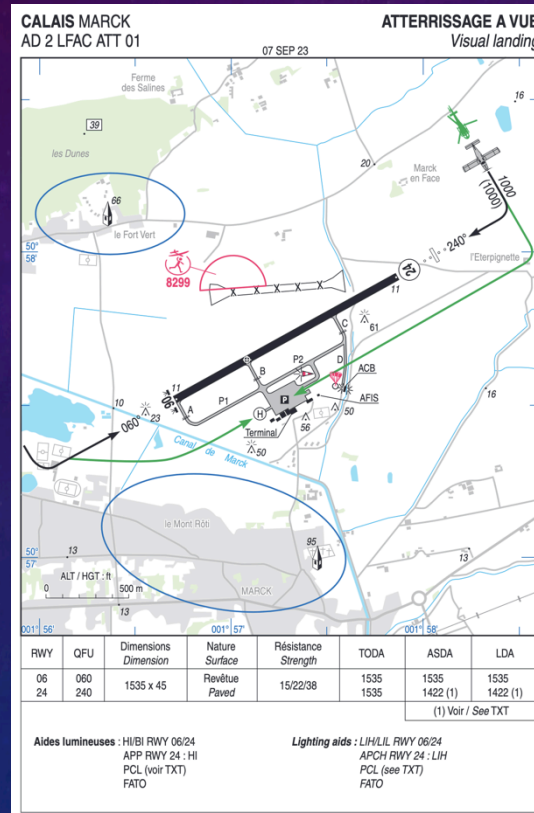
DR400 – 155CDI Ecoflyer:

- Primary Flight Display & Aeronautic GPS integrated
- Cruise speed: 120 kt/h
- Fuel: 160L (25L/h)
- Electric trim
- Electric flaps

LFAC TO EGSU WITH F-HGPC - LFAC

LFAC:

- AFIS Airfield
- Approach by Lille SIV



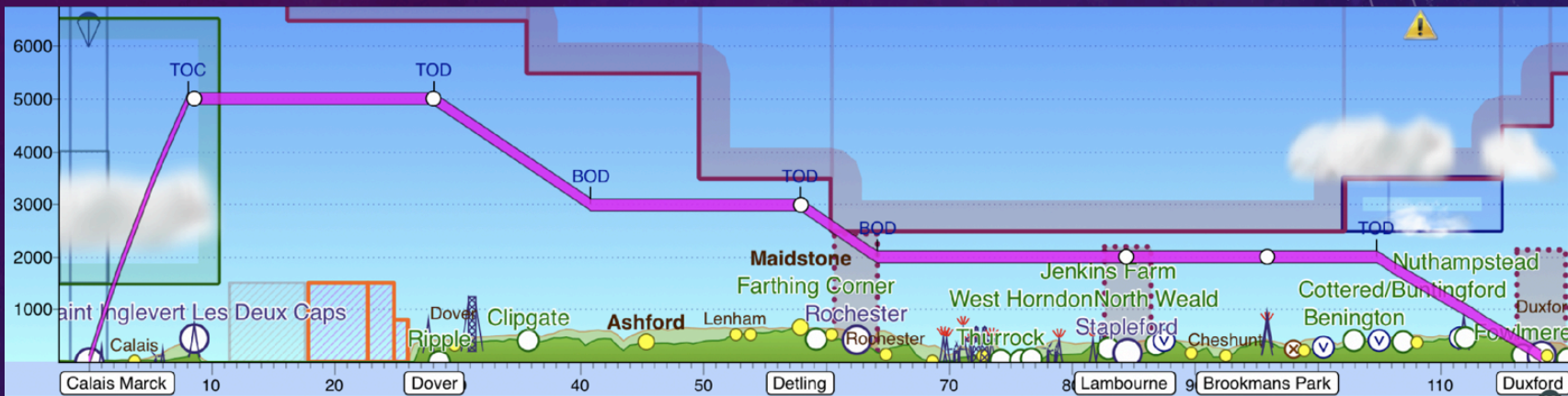
LFAC TO EGSU WITH F-HGPC - ROUTE



Route :

- Shorter distance over the sea
- Use VORs as waypoints (already known by GPS)
- Remain under London A class Airspace
- Avoid controlled airspaces as much as possible

LFAC TO EGSU WITH F-HGPC - ALTITUDE

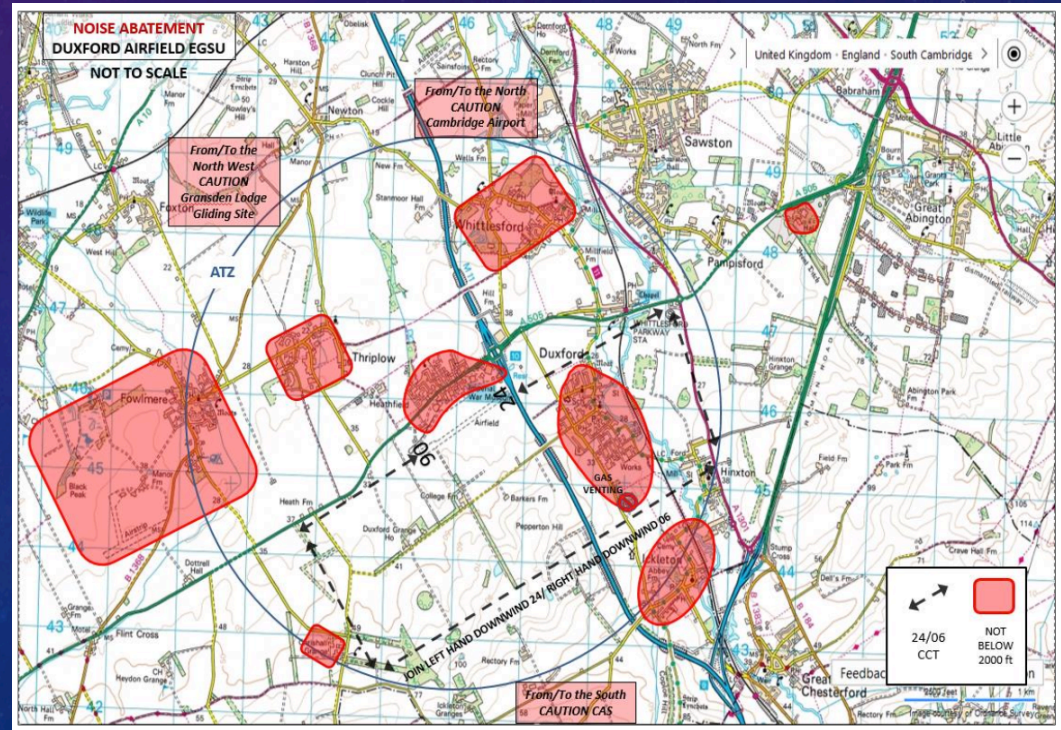


Altitude :

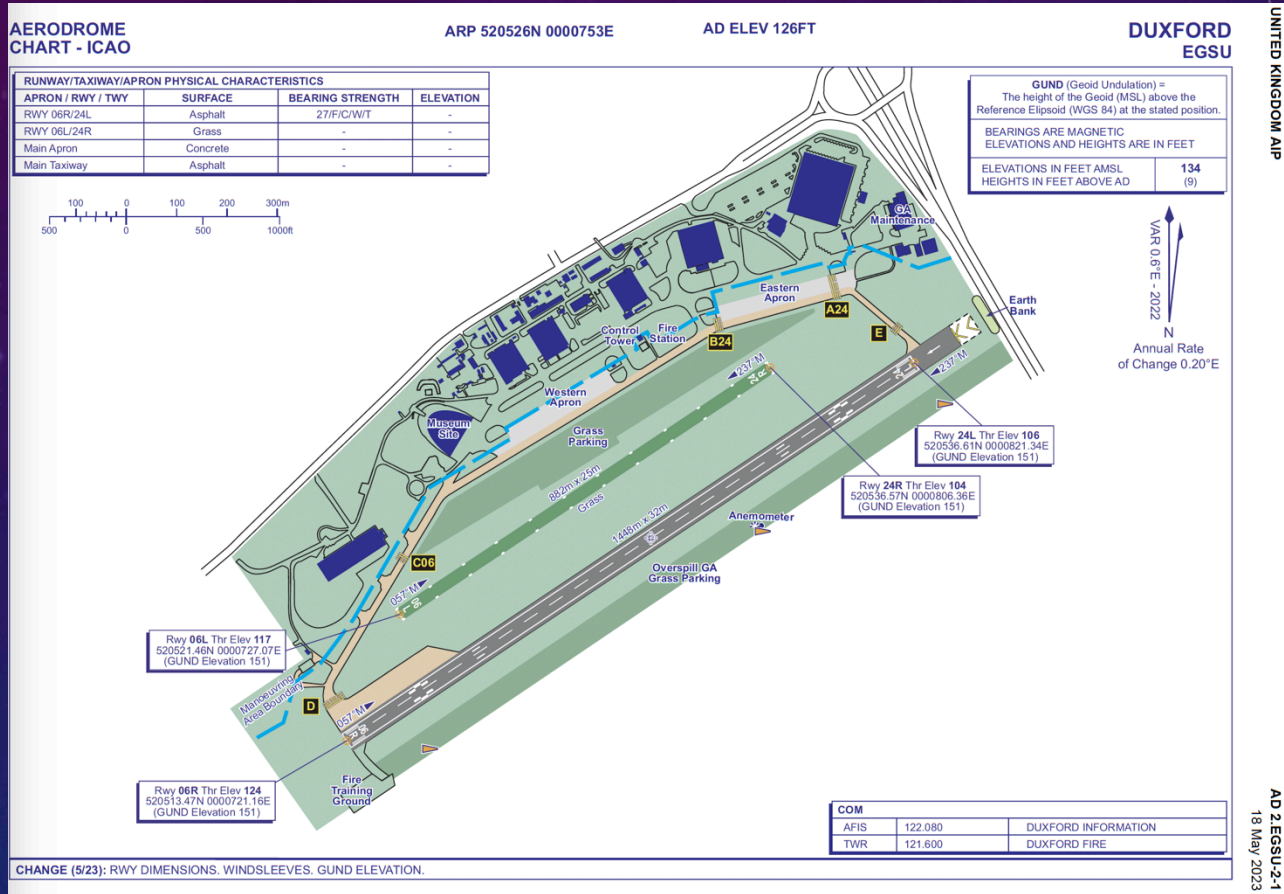
- High over the sea (only one engine 😊)
- As high as possible while remaining under London A class airspace

LFAC TO EGSU WITH F-HGPC - EGSU

- Communication with “Duxford Radio” on 122.080, 10nm to obtain airfield information
- Circuits 1000ft AAL
- QFE (Duxford elevation 126 ft AMSL)
- Runway 06/24 asphalt :
 - South circuits
 - Runway 06R: downwind right-hand
 - Runway 24L: downwind left-hand
- Runway 06/24 grass:
 - North circuits
 - Runway 06L: downwind left-hand
 - Runway 24R: downwind right-hand



LFAC TO EGSU WITH F-HGPC - EGSU



LFAC TO EGSU WITH F-HGPC - NAVIGATION LOG

F-HGPC Calais Marck - Duxford										PLOG
AVION: F-HGPC (DR40)		Startup		Brakes Off						
PILOTE: Johan Malaquin		Takeoff		Landing						
CARBURANT REQUIS 45,1 ltr		Brakes On		Shutdown						
CARBURANT PRÉVU 160,0 ltr AUTONOMIE: 5 hr 59 m										
TEMPS: 23 nov. 2023 09:00 Z										
ATTERRIR À: 23 nov. 2023 10:10 Z										
Elévation 12 ft (0 hPa) SR 07:20 Z, MCT 06:43 Z										
	MSA	Level	IAS	Trkt	Wind	HdgM	GS	Dist	Time	
LFAC Calais Marck	1800	5000	120	260	299/21	268	65	8,6	8	
○ N505612 E0014340										
N505612 E0014340	1800	5000	120	314	304/24	311	105	19	11	
☑ DVR Dover										
DVR Dover	2300	3000	118	287	299/22	288	106	30	17	
☑ DET Detling										
DET Detling	1700	2000	117	321	302/24	316	100	26	16	
☑ LAM Lambourne										
LAM Lambourne	2000	2000	117	303	298/27	301	94	11	7	
☑ BPK Brookmans Park										
BPK Brookmans Park	2000	2000	117	023	292/31	008	122	22	11	
☑ EGSU Duxford										
Elévation 126 ft (5 hPa) SS 15:58 Z, ECT 16:37 Z										
										118 1:10
LFAC Calais Marck										LILLE 134,825
CALAIS Information	128,925									Flight Information Service
Calais	128,925									London Information 124,600
Flight Information Service										LARS
Paris Info	125,700									Southend Radar 130,780
Lille Info	120,275									Southend Frequency Monitoring Code
Lille 13 TMA										Southend Approach 130,780
LILLE	120,275									Squawk 5050
LILLE	126,480									Rochester ATZ

F-HGPC Calais Marck - Duxford			PLOG
Rochester Information	122,255	Stapleford Radio	122,805
EGTO Rochester		EGSG Stapleford	
Rochester Information	122,255	Stapleford Radio	122,805
LARS		Luton Frequency Monitoring Code	
Farnborough Radar (E)	123,225	Luton Radar	129,550
EGML Damyns Hall		Squawk	0013
Hornchurch Radio	119,555	Stansted Frequency Monitoring Code	
Thames Frequency Monitoring Code		Stansted Radar	120,625
Thames Director	132,700	Squawk	7013
Squawk	0012	EGSS London Stansted	
LARS		ATIS	127,180
Farnborough Radar (N)	132,800	Stansted Radar	120,625
EGLC London City		Stansted Director	136,200
ATIS	136,355	EGSU Duxford	
Thames Director	128,025	Duxford Radio	122,080
Heathrow Radar	125,625	Duxford Information	122,080
Thames Director	132,700	EGMA Fowlmere	
Stapleford ATZ		Fowlmere Radio	135,705
☑ DVR (Dover)	114,950	☑ BPK (Brookmans Park)	117,500
☑ DET (Detling)	117,300	☑ BKY (Barkway)	116,250
☑ LAM (Lambourne)	115,600		

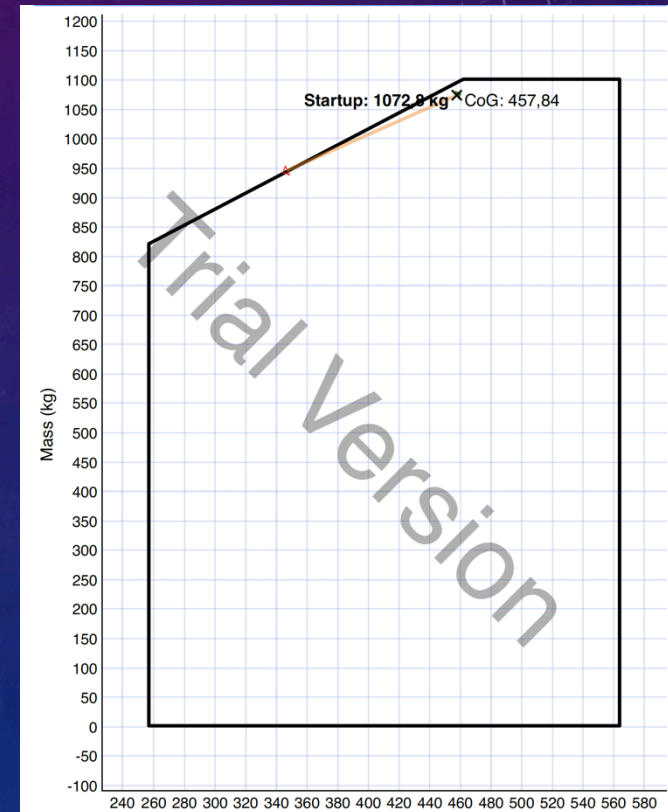
LFAC TO EGSU WITH F-HGPC - FUEL

Carburant

Taxi/Décollage		3,5 ltr	Prévoyance (5 %)	1,3 ltr
Enroute	1h 10m	26,8 ltr	Minimum	45,1 ltr
Temps d'attente	45m	11,5 ltr	Planifié	5h 59m 160,0 ltr
Atterrissage		2,0 ltr		

LFAC TO EGSU WITH F-HGPC - WEIGHT & BALANCE

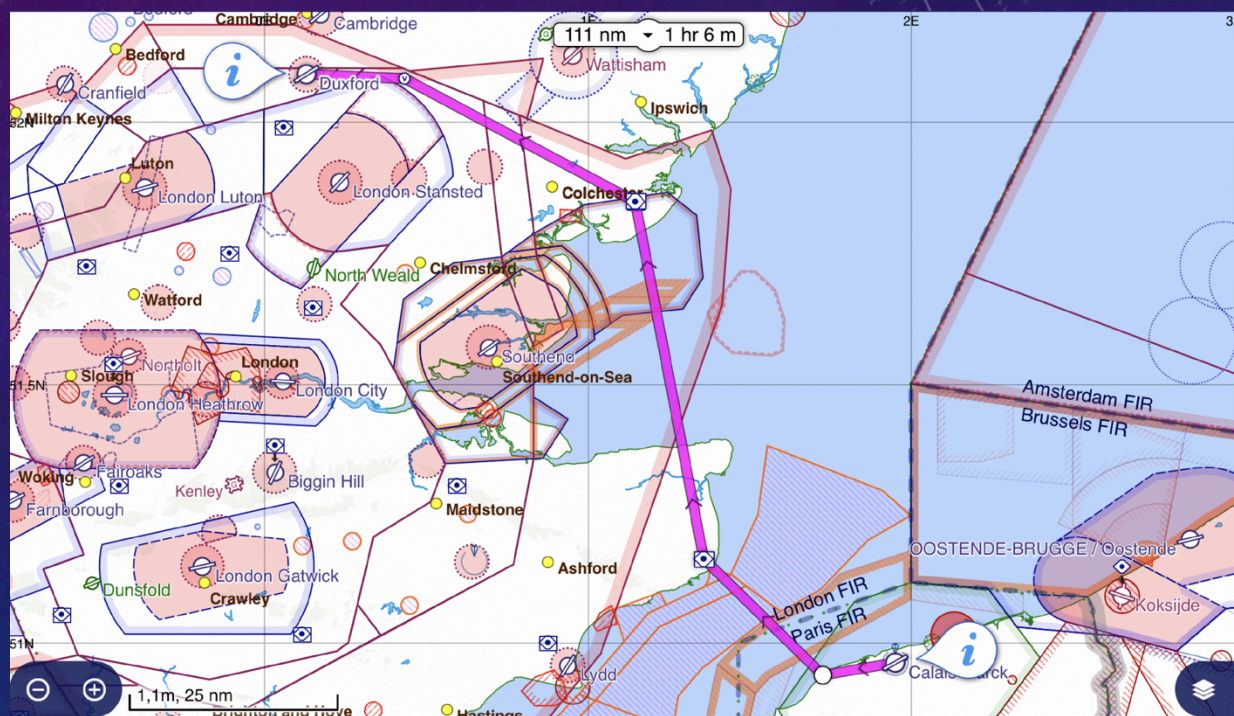
	Weight	Arm (lon)	Mom (lon)
Empty	699,8 kg	215,00	150457
Fuel (110,0 ltr)	88,0 kg	1120,00	98560
Pilot	60,0 kg	410,00	24600
Front Passenger	95,0 kg	410,00	38950
Row 1 Left	80,0 kg	1190,00	95200
Row 1 Right	0,0 kg	1190,00	0
Baggage 1	10,0 kg	1900,00	19000
Supplemental Fuel Tank (50,0 ltr)	40,0 kg	1610,00	64400
Totals	1072,8 kg	457,84	491167



LFAC TO EGSU WITH F-HGPC - ALTERNATE ROUTE

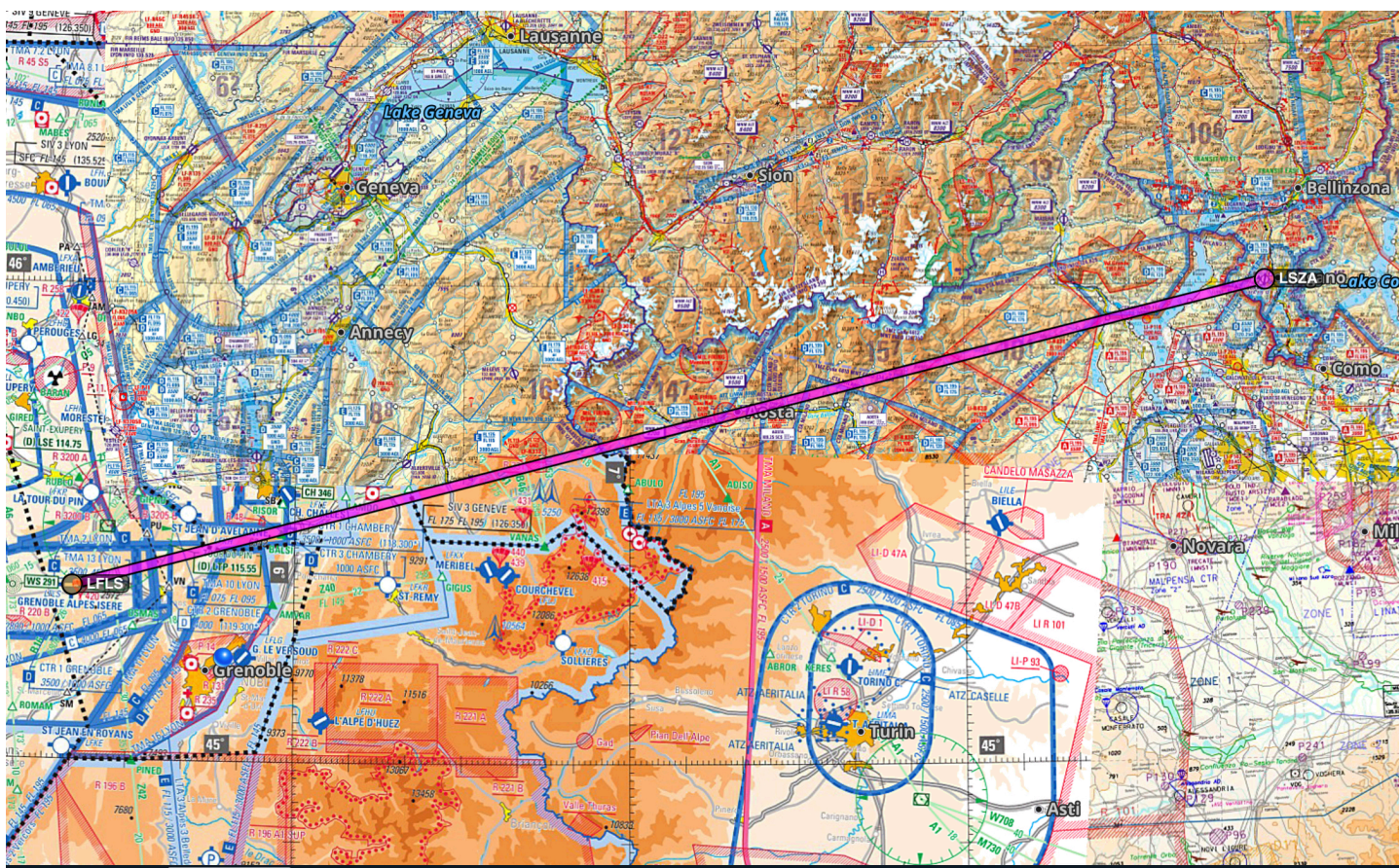
Route :

- East side of Southend
- Longer distance over the sea



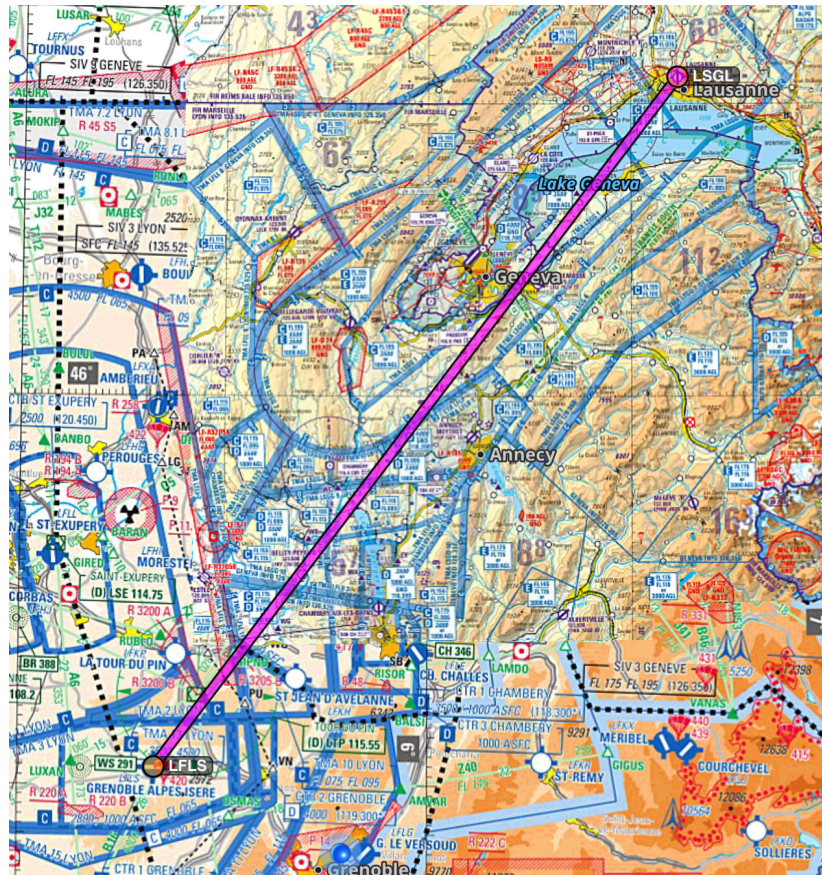
Crew 3: LFLS – LSZA with F-GNXT

Crew	Names	Aircraft	Type	Departure	Destination
3	Francois Zanier, Frederic Dumas	F-GNXT	DR455	LFLS	LSZA



Crew 4: LFLS – LSGL with F-GSRE

Crew	Names	Aircraft	Type	Departure	Destination
4	Jean-Louis Monin, Roman Dieuguillot	F-GSRE	DR460	LFLS	LSGL



An aerial photograph of an airport terminal and runway. The terminal is a long, low building with a glass facade, situated on a grassy area. To the left of the terminal are several soccer fields. The runway is a long, straight asphalt strip with white markings, including a large arrow pointing towards the terminal. In the background, there is a city with various buildings and a large body of water under a clear sky.

LFLS – LSGL
FGSRE – DR 400-160

Romain Dieu-Guillot / Jean-Louis Monin



Lausanne

FGSRE



160 HP

120 kt

1 X 90 L main + 2 X 34 L wings

Chargement du F-GSRE

sièges avant (kg)

80

80

sièges arrière (kg)

5

5

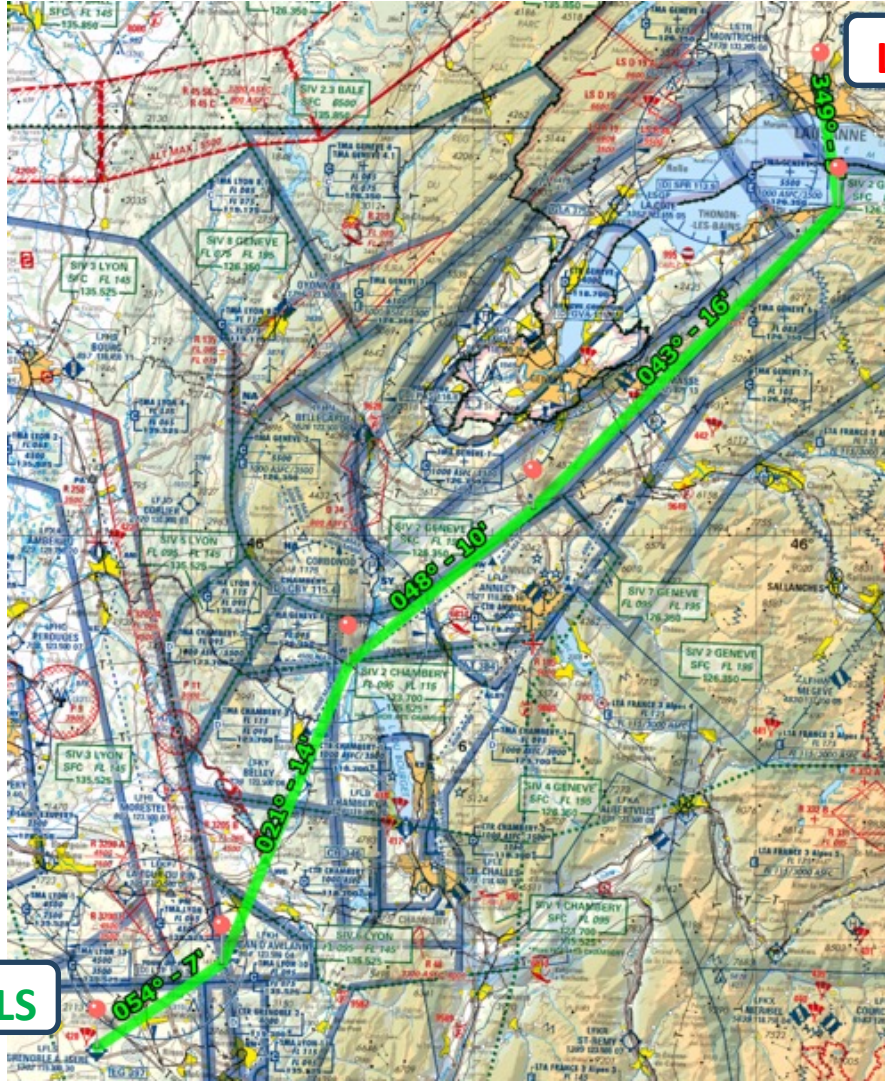
bagages (kg)

0

fuel 1 = 110 l.

fuel 2 = 80 l.





LSGL

LFLS



LFLS - LSGL / FGSRE

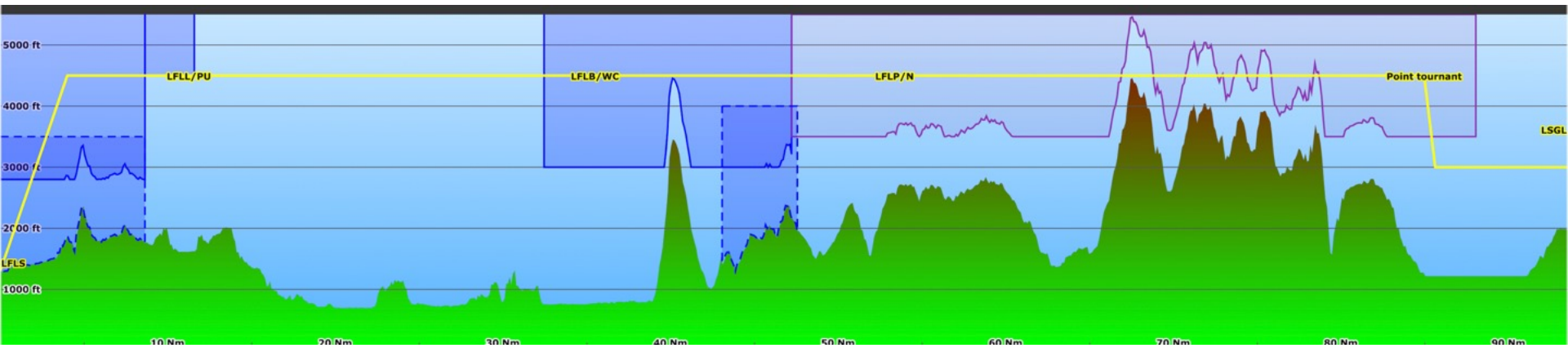
Z vol Z min	Rm	DSD DIST DTG	TAV TSV	Report
↗ 4500 3000	054°	0 11 94	7' 7'	LFLS
→ 4500 3000	021°	11 24 82	14' 12'	LFLB/WC
→ 4500 4000	048°	35 18 58	10' 9'	LFLP/N
→ 4500 5000	043°	53 32 40	16' 16'	Lugrin
↘ 3000 2500	349°	85 9 9	5' 4'	LSGL
		94 94 0	51' 48'	

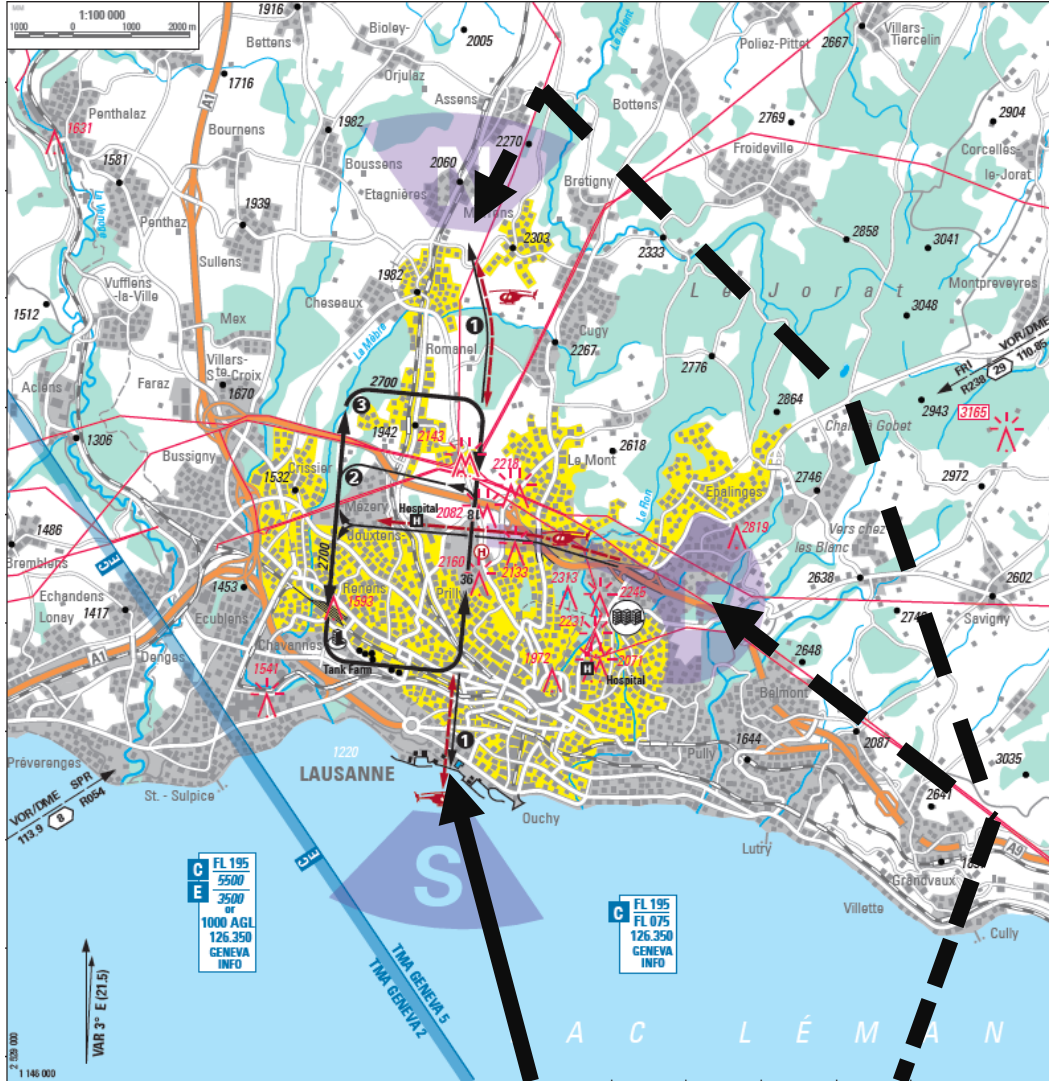
Aérodrome de départ : LFLS
 Aérodrome d'arrivée : LSGL
 Aérodrome(s) de dégagement :
 Distance totale en Nm : 94
 Facteur de base : 0.50
 Temps de vol en minute : 51
 Conso (l par heure) : 32

Items	Temps	Qté (l)
Roulage (10' par aérodrome)	20	10.7
Délestage trajet *	62	33.1
Marge	0	0.0
Réserve de dégagement	15	8.0
Réserve finale **	30	16.0
Exercices de maniabilité	0	0.0
Carburant supplémentaire	0	0.0
TOTAL :	02H07	68 l

* Le maximum entre TSV et TAV + Procédure d'intégration (forfait 10')

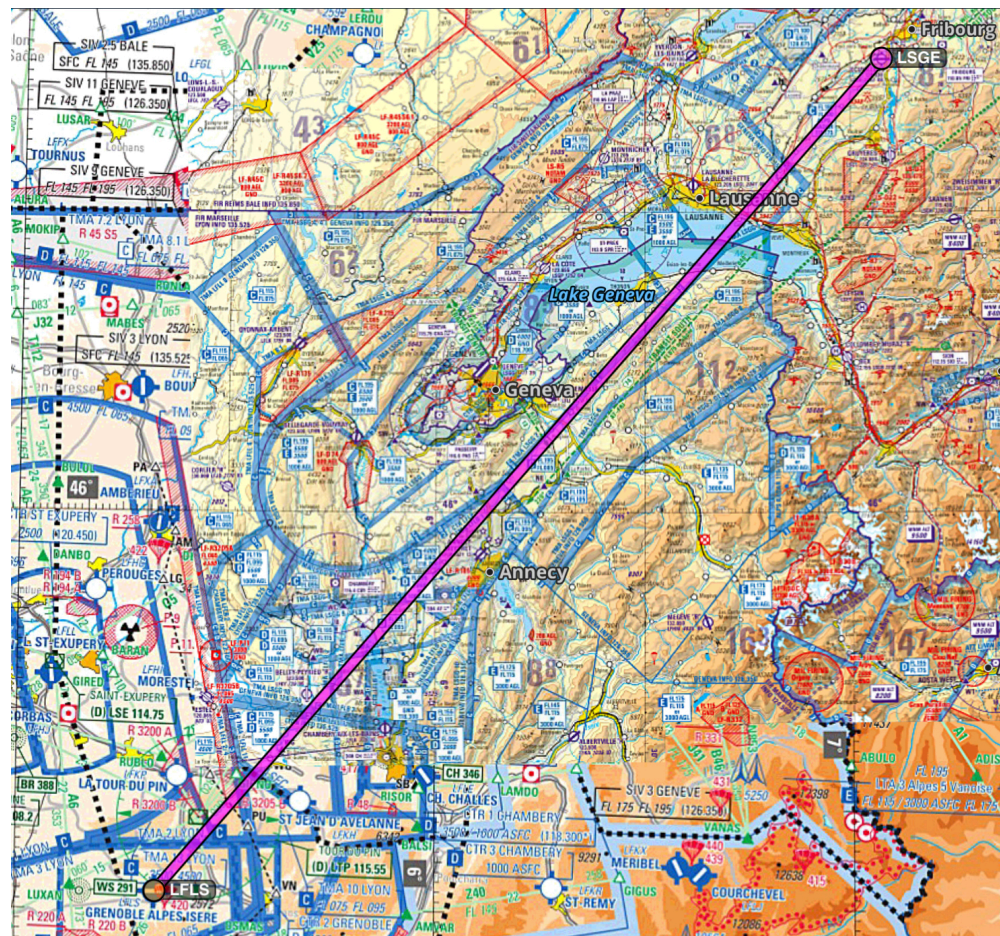
** 30' en VFR de jour / 45' en VFR de nuit



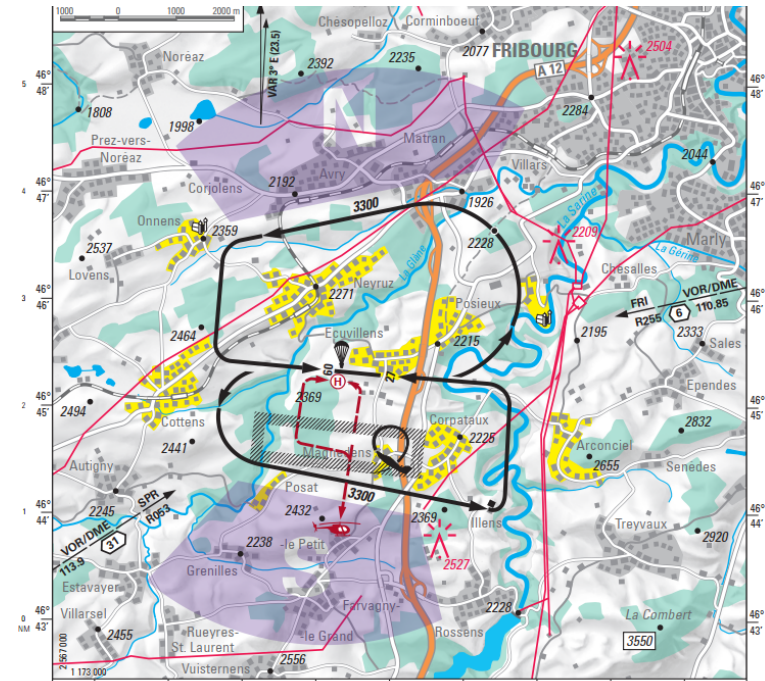
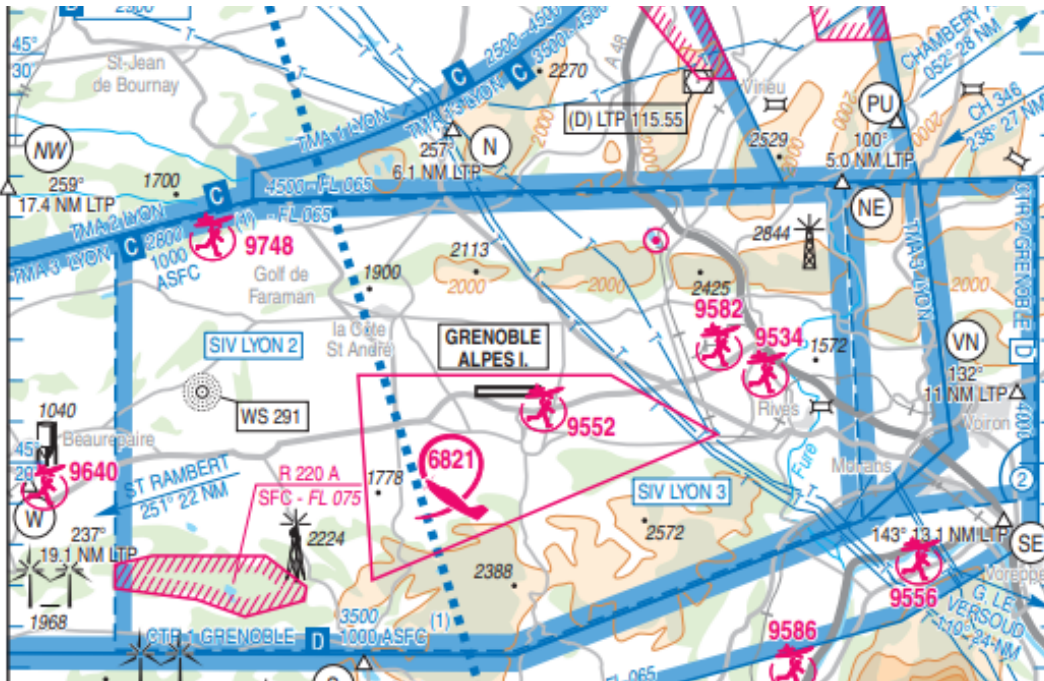


Crew 5: LFLS to LSGE with F-HBFO

Crew	Names	Aircraft	Type	Departure	Destination
5	Thomas Calmant, François-Karim Laben	F-HBFO	DR435	LFLS	LSGE



From St Geoirs to Ecuwillens with F-HBFO



F-HBFO

Robin DR400-135 CDI

JET-A1 fuel

FADEC

Single-lever throttle control

GPS Honeywell KMD150

Radio Garmin GNC 255

8,33 kHz

XPDR Garmin GTX 330

Mode S



F-HBFO Performance

SPEED		Km/h	Kts
VS	: Stall speed with no flaps	99	54
VS1	: Stall speed with flaps 1	92	50
VS0	: Stall speed with flaps 2 (landing)	87	47
VFE	: Max flap extended speed	170	92
VA	: Maneuvering speed	215	116
VNO	: Max speed for normal operations	260	140
VNE	: Never exceed speed	270	146
Take off speed		106	57
Initial climb speed		120	65
Best rate of climb (Vy)		144	78
Best angle of climb (Vx)		120	65
Cruise speed	ex: 75%	75 % / 206	111
Waiting speed	1,45 VS	144	78
Approach Speed	1,45 VS1	134	72
Landing speed	1,3 VS0	115	62
Best glide speed	Best L/D=8	144	78

Fuel consumption thrust 75% = 21L/h

Total usable fuel = 109L

Take off distance to 50ft height 2000ft ISA = 490m

Landing distance from 50ft height 3000ft ISA = 541m

Departure airport: LFLS (Grenoble St Geoirs)

ATS

ATIS: 133,855

GND: 121,930

TWR: 119,300

APP: 125,430 (Lyon APP)

Runway

09/27 Paved 3050m

Altitude: 1302 ft

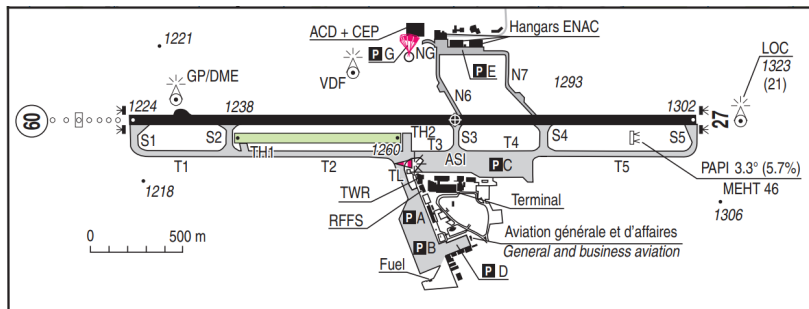
Facilities

Customs

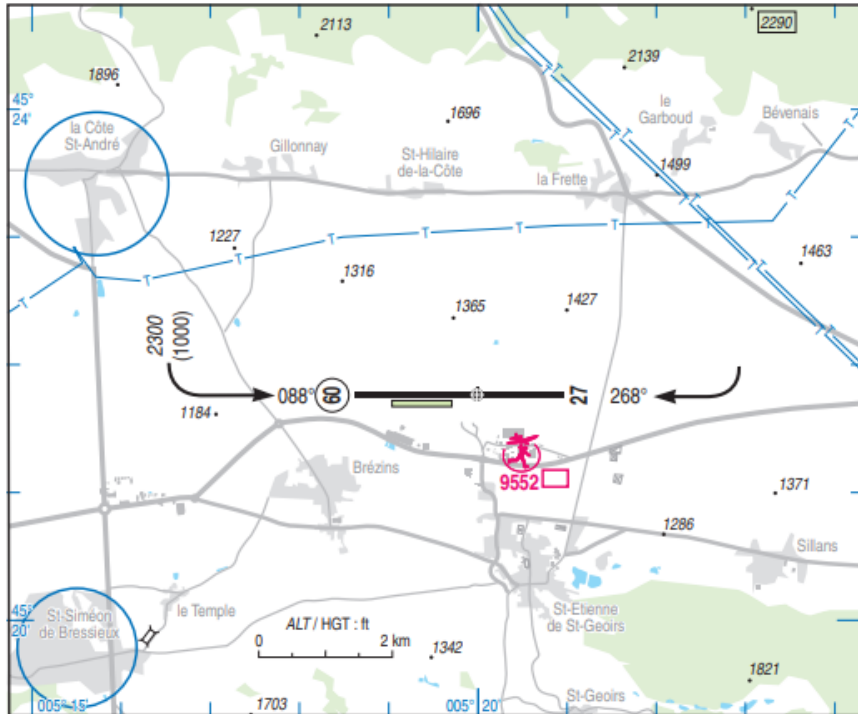
JET-A1 fuel

By truck

Rendez-vous at GA facilities



Departure airspace: LFLS (Grenoble St Geoirs)



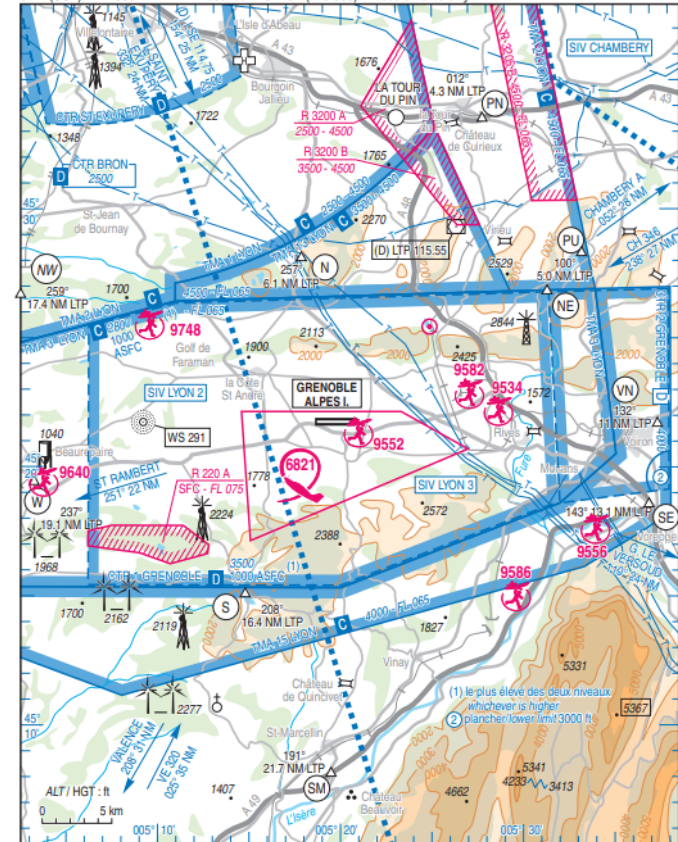
APPROCHE A VUE
Visual approach

Ouvert à la CAP
Public air traffic
16 JUN 22

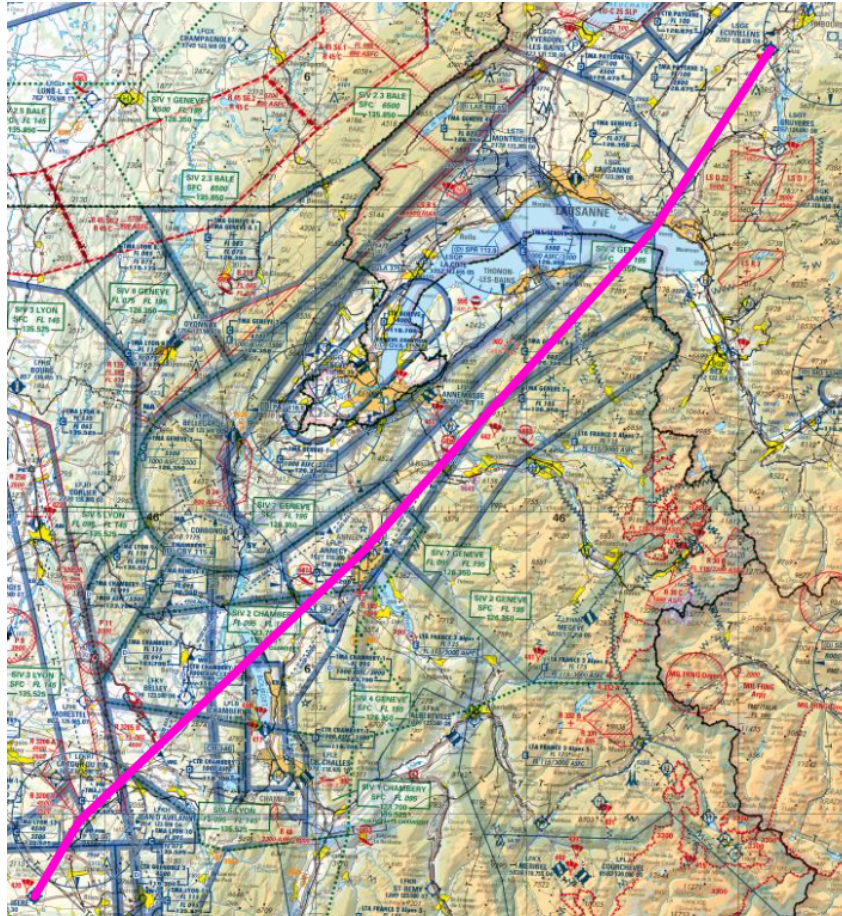
GRENOBLE ALPES ISERE
AD 2 LFLS APP 01

			ALT AD : 1302 (47 hPa)	LFLS
			LAT : 45 21 47 N	VAR : 2°E (20)
			LONG : 005 19 58 E	

ATIS : 133.855 ☎ 04 85 88 09 00
APP : LYON Approche / Approach 125.430
TWR : 119.300
Absence ATS : AJA (119.300) FR seulement / only. ILS/DME RWY 09 SG 109.300
VDF
GND (SQL) : 121.930



Flight plan – LFLS => LSGE Overview



1. LFLS
2. LTP vor
3. LFLP

Geneva Transit South on NBD
AT 384 (southwest of LFLP)

4. Vevey
Get off Geneva Transit South
(which continues to FRI)
5. Ecuwillens

Expected flight altitude: FL75

Leg 1: LFLS => LTP



Radio

Grenoble TWR 119,300

Lyon Info 135,525

Lyon APP 125,430

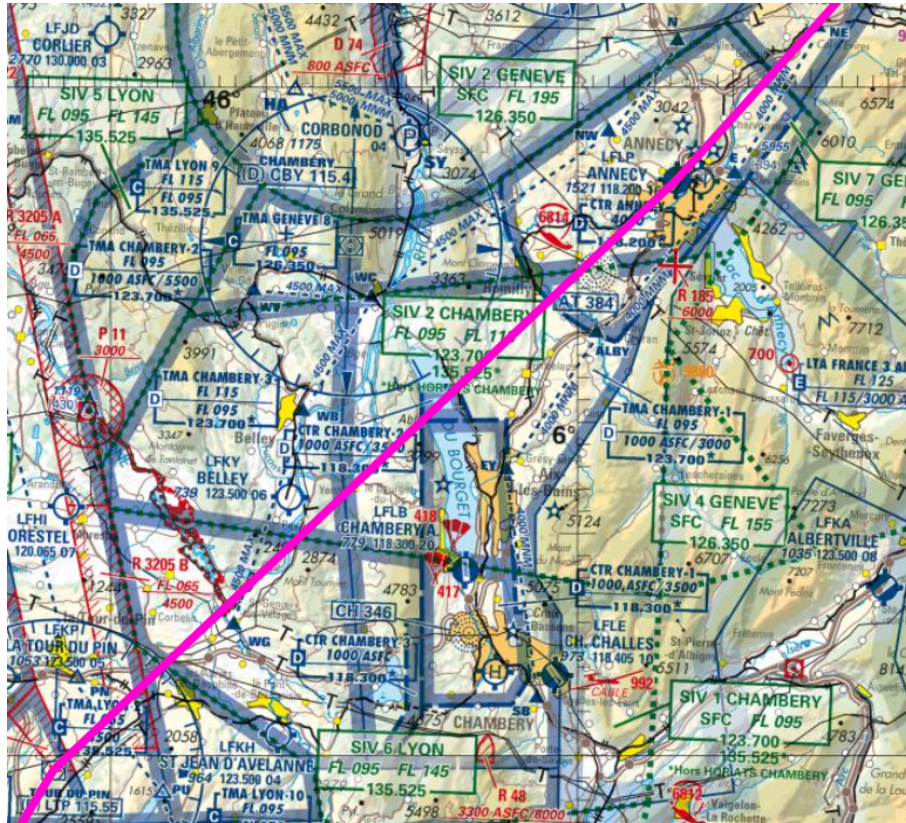
Nav

VOR LTP 115,55

Direct homing

Distance	9 NM
Estimated duration	5 minutes
Coarse grain azimuth	030°
Zsec	3000 ft

Leg 2: LTP => LFLP



Radio

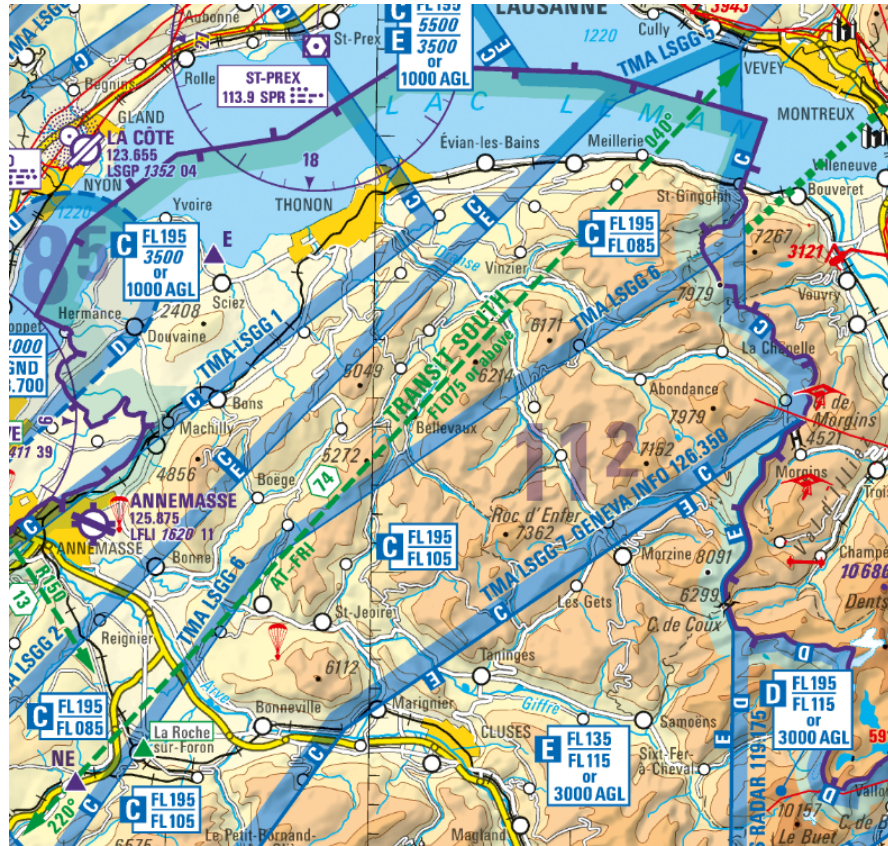
Lyon Info 135,525
Chambéry Info 118,300
Geneve Info 126,350
Annecy 118,200

Nav

VOR LTP 115,55 – QDR 044
VOR FRI 110,85 – QDM 044

Distance	39 NM
Estimated duration	22 minutes
Azimuth	044°
Zsec	6000 ft

Leg 4: Geneva Transit South



Airway from LFLP NDB to VOR FRI

Radio

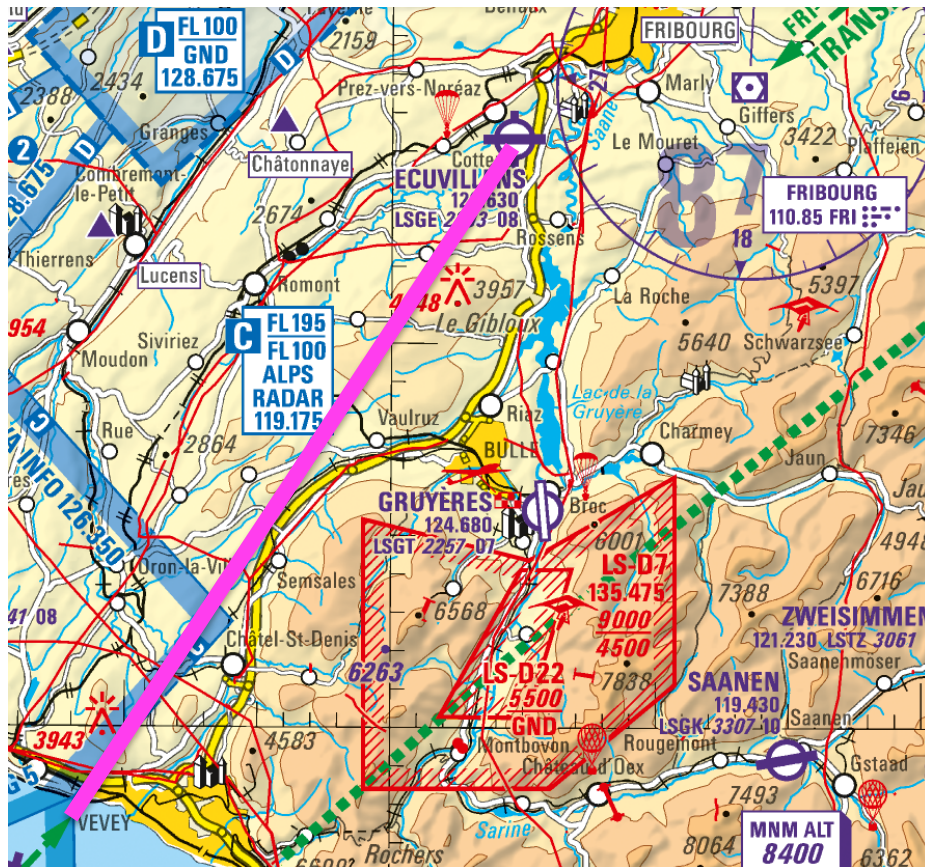
Geneva Info 126,350

Nav

VOR FRI 110,85 – QDM 040

Distance	34 NM
Estimated duration	19 minutes
Azimuth	040°
Zsec	6700 ft

Leg 5: Vevey => LSGE



Radio

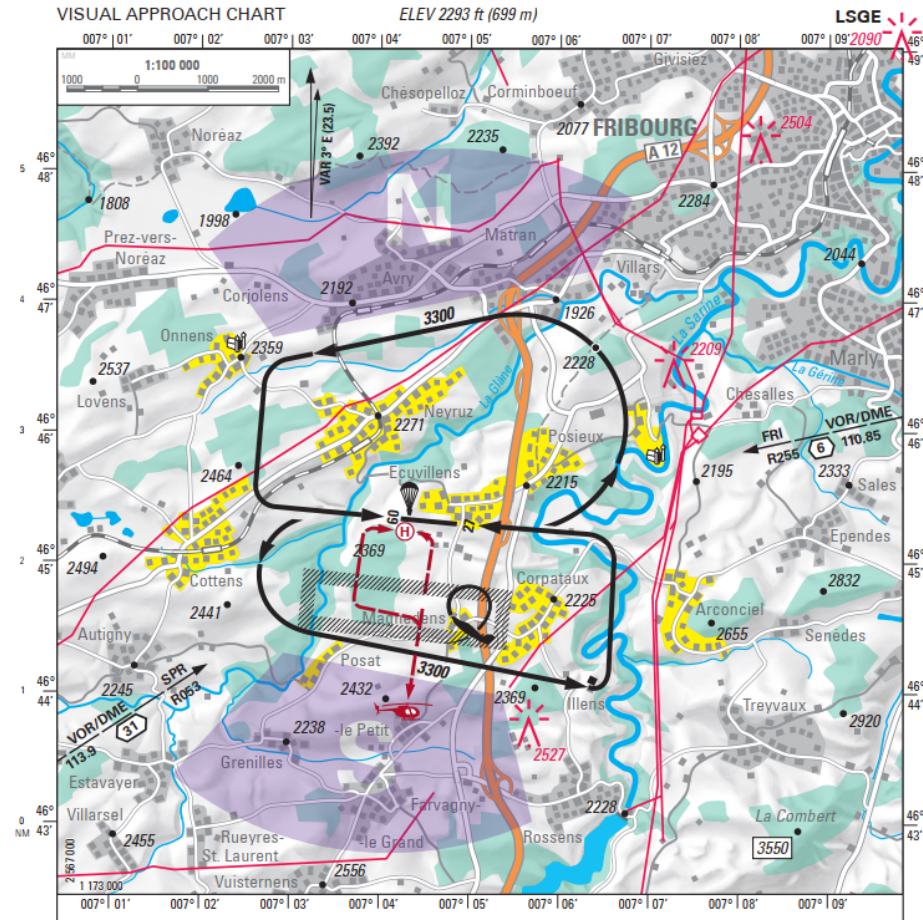
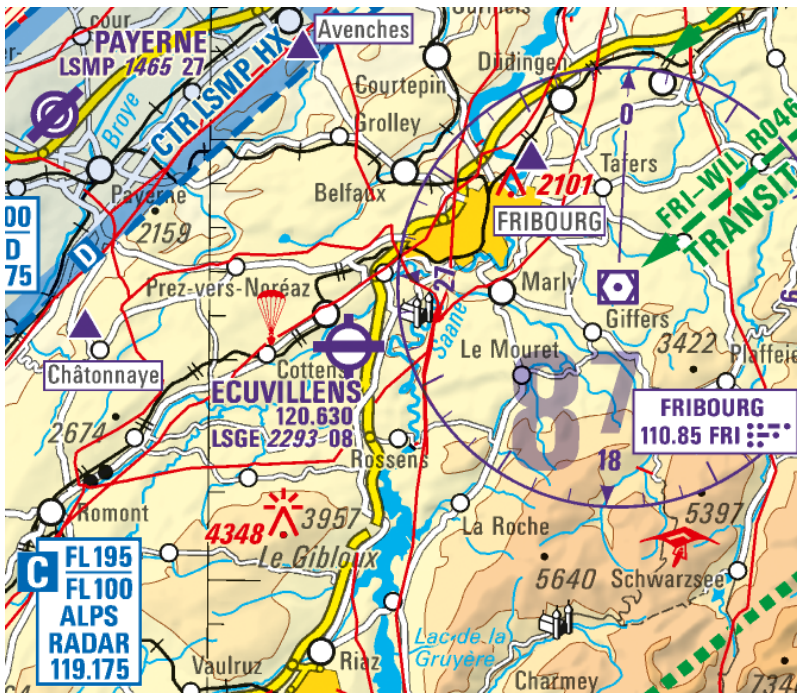
Geneva Info 126,350
 Payerne 128,675
 Alps Radar 119,175 (FL100+)

Nav

Dead reckoning
 Top of descent = 10 minutes before overhead
 Airport at FRI 110,85 QDR 255

Distance	22 NM
Estimated duration	12 minutes
Azimuth	030°
Zsec	5000 ft

Arrival airspace: LSGE (Ecuwillens)



Arrival airfield: LSGE (Ecuwillens)

No ATS

A/A 120,630

Runway

09/27 Paved 800m

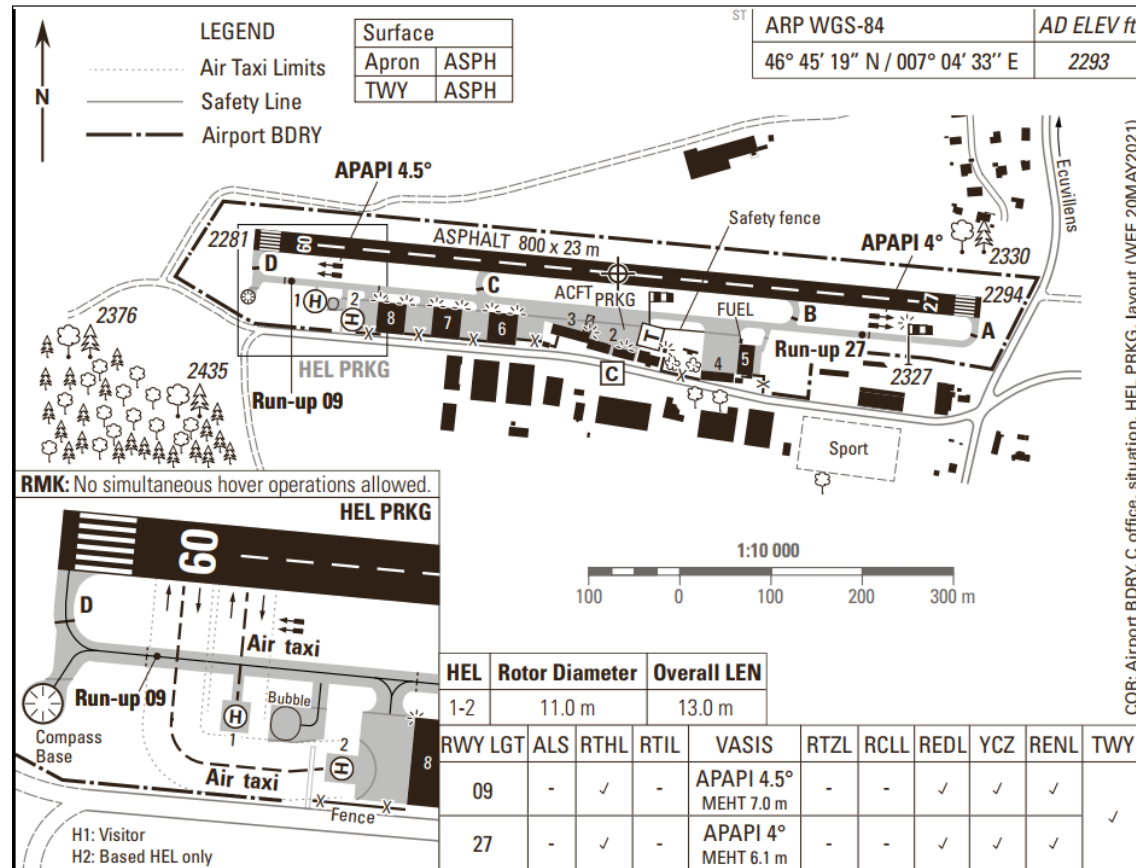
Altitude: 2293 ft

Facilities

Customs on demand

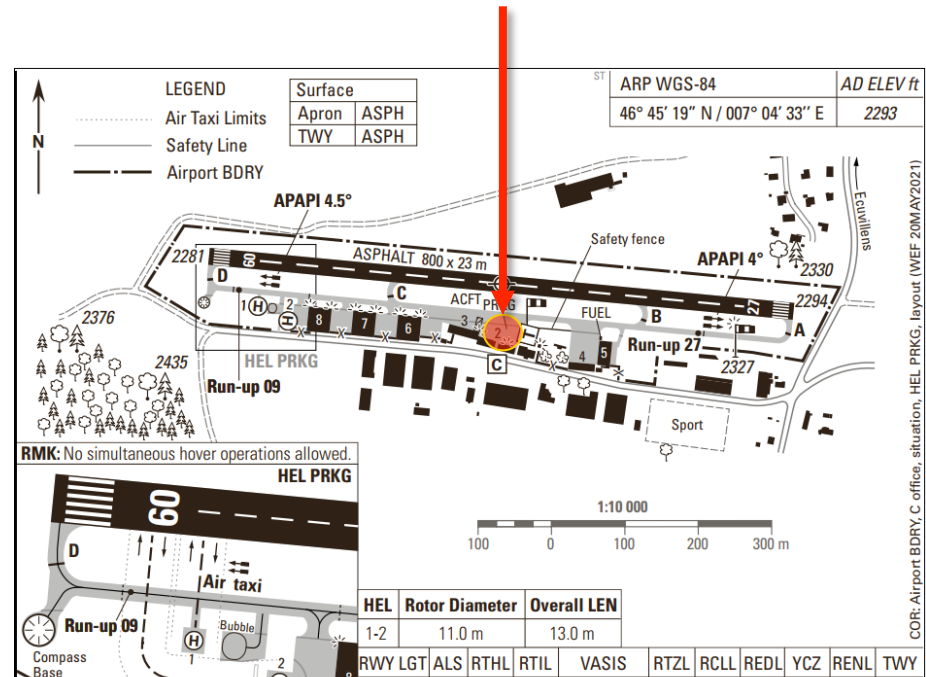
Free parking (SR-SS)

JET-A1 fuel

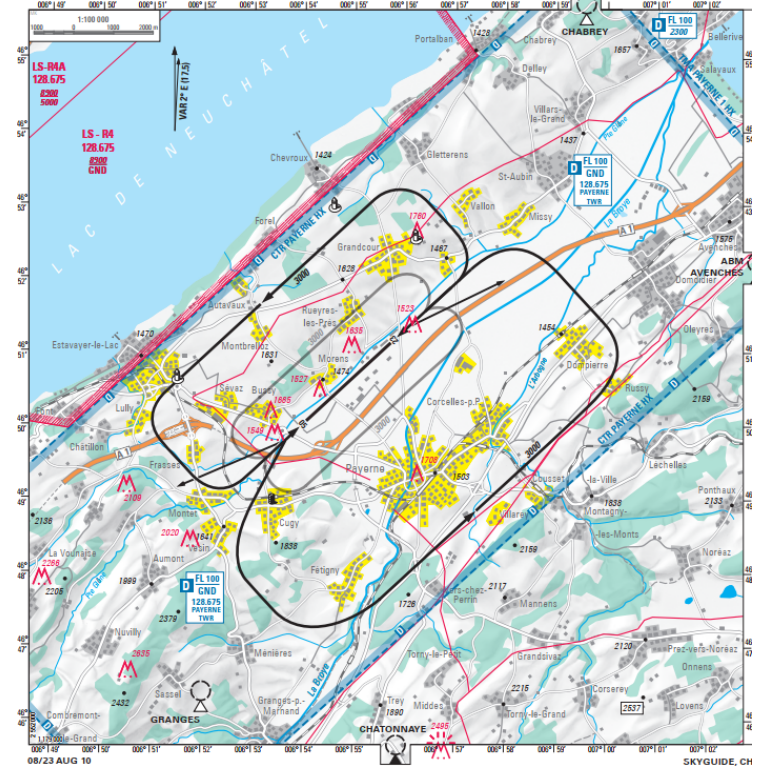
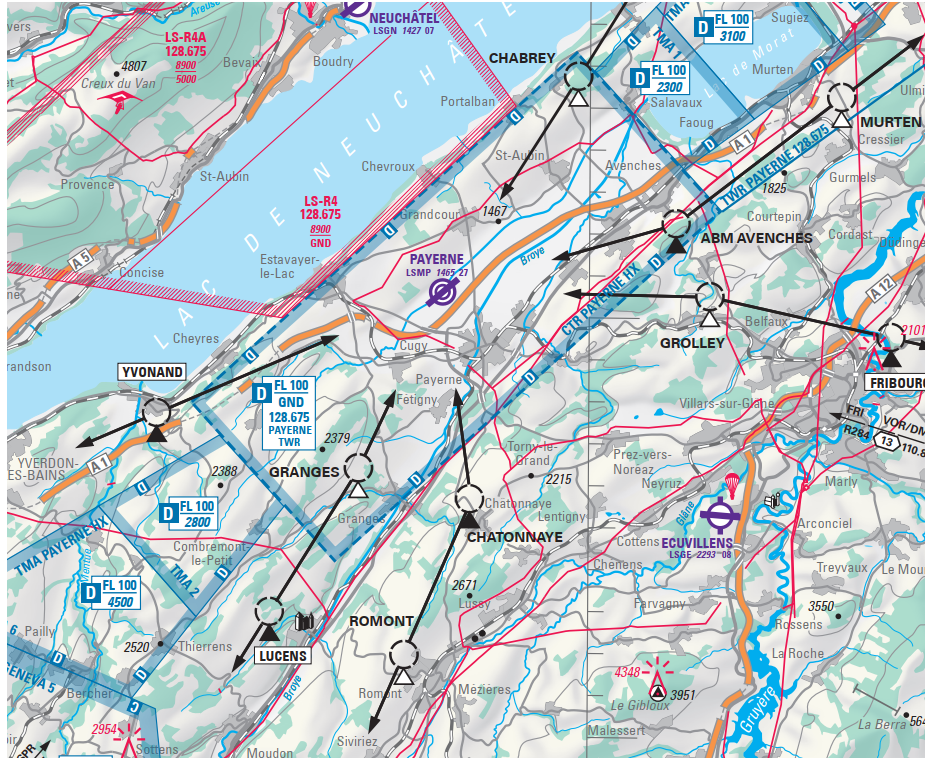


COR: Airport BDRY, C office, situation, HEL PRKG, layout (WEF 20MAY2021)

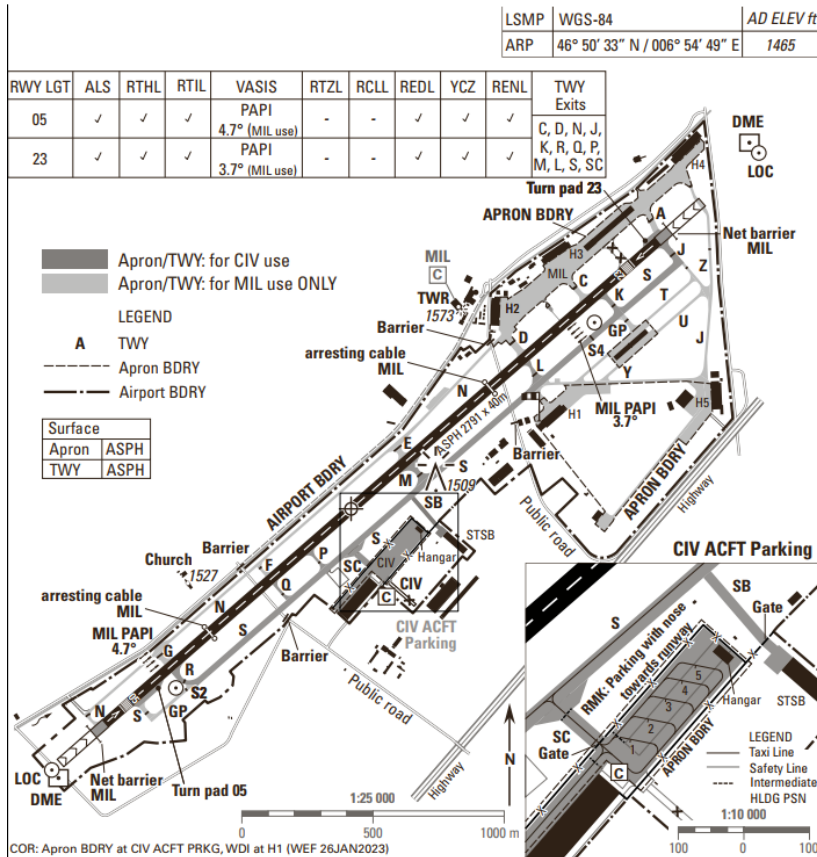
Arrival airfield: Parking details



Alternate #1: Payerne (LSMP)



Alternate #1: Payerne (LSMP)



ATS

CIV/MIL airport

TWR 128,675

Runway

05/23 Paved 2791m

Altitude: 1465 ft

Facilities

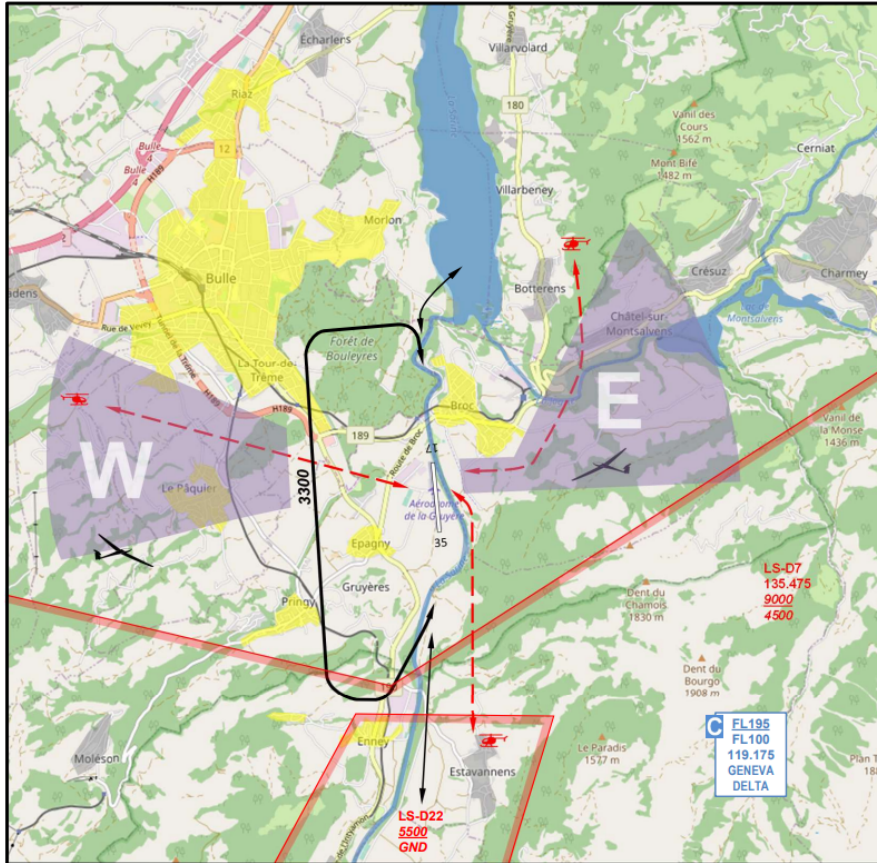
Customs (on demand)

Jet A1 Fuel

Requires PPR

Expect delay on arrival (est.: 15min)

Alternate #2: Gruyère (LSGT)



ATS

AFIS 124,680

No airfield ground chart

Runway

17/35 Unpaved (grass) 811m

Altitude: 2257 ft

LSGT GRUYERES

Aerodromes and services

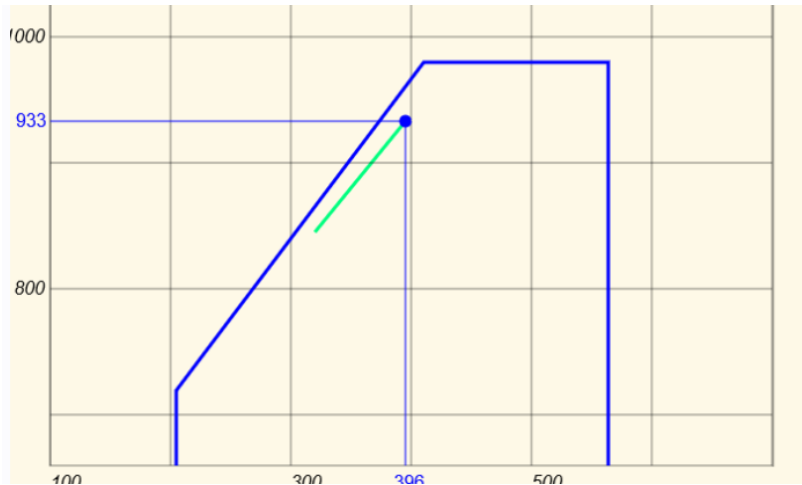
- LSSN-B1780/23
FROM: 2023 11 17 14:54 TO: 2024 03 01 07:00
A) LSGT
Q) LSAS / QFALT / IV / NBO / A / 000/999 / 4636N00706E005
E) AD CLSD DUE TO WINTER COND EXC FOR BASED OR RESCUE HEL AND PRIOR AUTH ACFT.

Weight and balance

Total weight = 933kg

Weight is within the limit

Balance is forward so
more stable than
maneuverable



Fuel estimate

Leg	Distance (NM)	Time (min)	Accumulated time (min)
LFLS	-	-	-
LTP	9	10	10
LFLP	39	22	32
Vevey	45	25	57
LSGE	20	11	68

Alternate	Distance (NM)	Time (min)	Accumulated time (min)
LSMP	9	5	73
LSGT	10	6	74

	LFLS-LSGE		LSGE-LSMP	
	T(min)	Fuel(L)	T(min)	Fuel(L)
Taxiing		3		
Trip	68	24	6	2
Approach	10	4	25	9
Total	74	31	31	11
Unexpected wind (10%)				1
Total				43
Fuel reserve			30	11
Total				54
+ Margin			157	55
Total	Fuel consumption 75% thrust = 21L/h			109

Forecast weather

To be updated before flight

Dossier de vol

Dossier : **LFLG-LSGE**
Date : **Mardi 21 Novembre 2023 à 21H27 UTC.**
Niveau de vol maxi : **50**
([Ajouter aux favoris](#))

IMPRIMER TOUT LE DOSSIER

› Cartes

Domaine:FRANCE

TEMSI SFC-FL 150: [21UTC](#)
WINTEM FL 20-100: [21UTC](#) [00UTC](#) [03UTC](#)

IMPRIMER LES DONNÉES UNIQUEMENT

› Messages METAR,TAF,SIGMET,...

LFLS GRENOBLE ISERE
METAR: LFLS 212100Z AUTO 35014KT 9999 BKN013 BKN045 07/05 Q1017=
TAF LONG: AMD LFLS 212000Z 2120/2215 CNL=

LFLB CHAMBERY AIX LES BAINS
METAR: LFLB 212100Z AUTO 03006KT 360V060 9999 BKN036 OVC043
09/04 Q1017=
TAF LONG: AMD LFLB 212000Z 2120/2215 CNL=

LFLU VALENCE CHABEUIL
METAR: LFLU 211800Z AUTO 35017KT 9999 FEW064 SCT074 09/06 Q1015=

LFLP ANNECY MEYTHET
METAR: LFLP 212100Z AUTO 01008KT 340V040 9999 BKN038 BKN044
BKN052 08/04 Q1017=
TAF LONG: AMD LFLP 211900Z 2119/2215 CNL=

L SGG GENEVA
METAR: L SGG 212120Z 03007KT 9999 BKN040 09/04 Q1017 NOSIG=
TAF LONG: L SGG 212025Z 2121/2303 05010KT 9999 BKN040 TX09/2215Z
TN06/2205Z PROB40 TEMPO 2200/2208 BKN014 BECMG 2210/2212
05015G25KT BECMG 2218/2220 05008KT=

L SGS SION
METAR: L SGS 212120Z AUTO VRB02KT 9999 FEW095 03/03 Q1016=
TAF COURT: AMD L SGS 212005Z 2120/2124 CNL=

L SMP PAYERNE
METAR: L SMP 212120Z AUTO 00000KT 9999NDV FEW033 BKN090 07/05
Q1018 RMK=
TAF LONG: L SMP 211625Z 2117/2223 VRB02KT 9999 FEW035 BECMG
2117/2119 SHRA BECMG 2208/2210 05010KT TEMPO 2210/2213 NSW
BKN014=

NOTAM

Expect flight after March 1st
To be updated before flight

Arrival aerodrome : LSGE ECUVILLENS

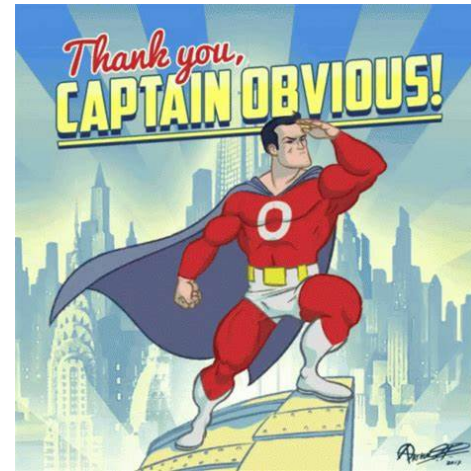
Aerodromes and services

- LSSN-B1788/23
FROM: 2023 11 23 05:00 TO: 2023 11 23 18:00
A) LSGE
Q) LSAS / QFALC / IV / NBO / A / 000/999 / 4645N00705E005
E) AD CLSD.

LSGT GRUYERES

Aerodromes and services

- LSSN-B1780/23
FROM: 2023 11 17 14:54 TO: 2024 03 01 07:00
A) LSGT
Q) LSAS / QFALT / IV / NBO / A / 000/999 / 4636N00706E005
E) AD CLSD DUE TO WINTER COND EXC FOR BASED OR RESCUE HEL AND
PRIOR AUTH ACFT.



Time to visit Fribourg!

The Old town

Well preserved medieval city

Chemins de fer du Kaeserberg

Swiss model railways

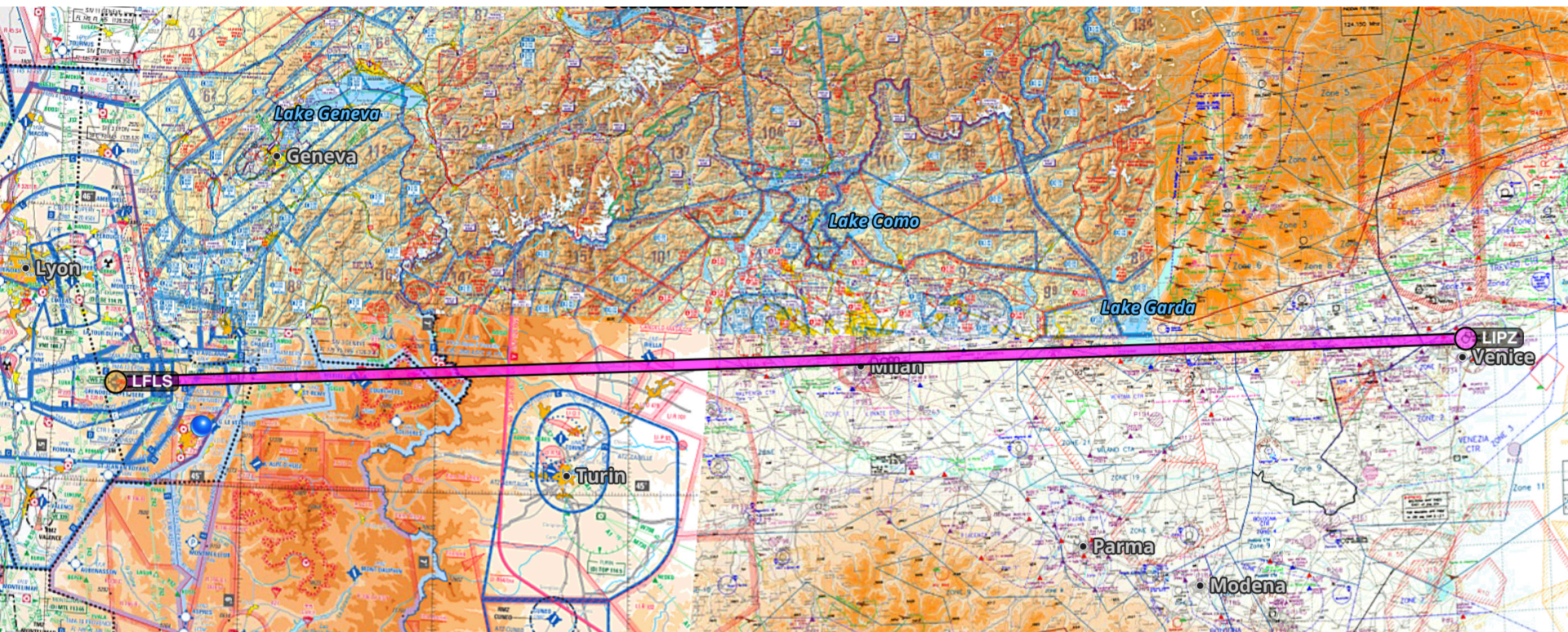
Swiss Viper Museum

Muscle car museum

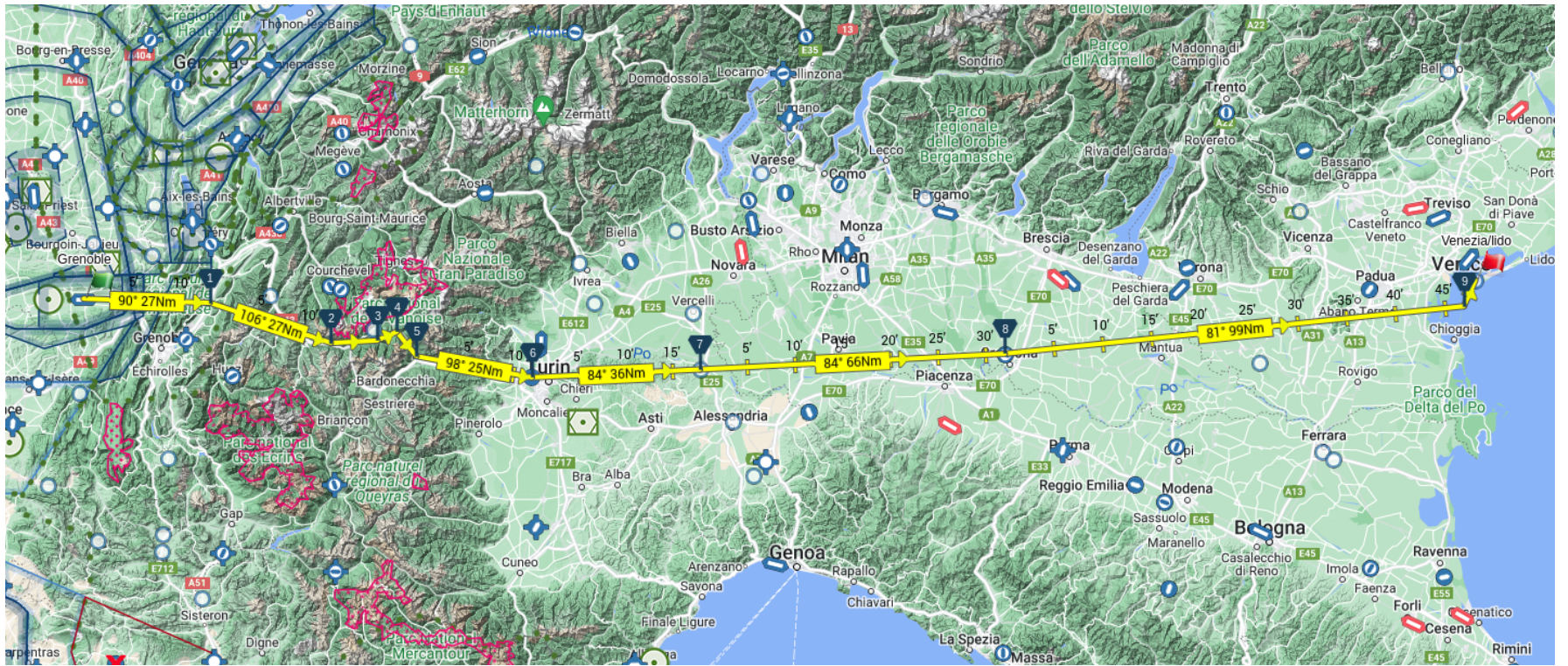


Crew 6: LFLS to LIPZ with F-HGPC

Crew	Names	Aircraft	Type	Departure	Destination
6	Jean-Yves Larnaudie, Alejandro López	F-HGPC	DR455	LFLS	LIPZ



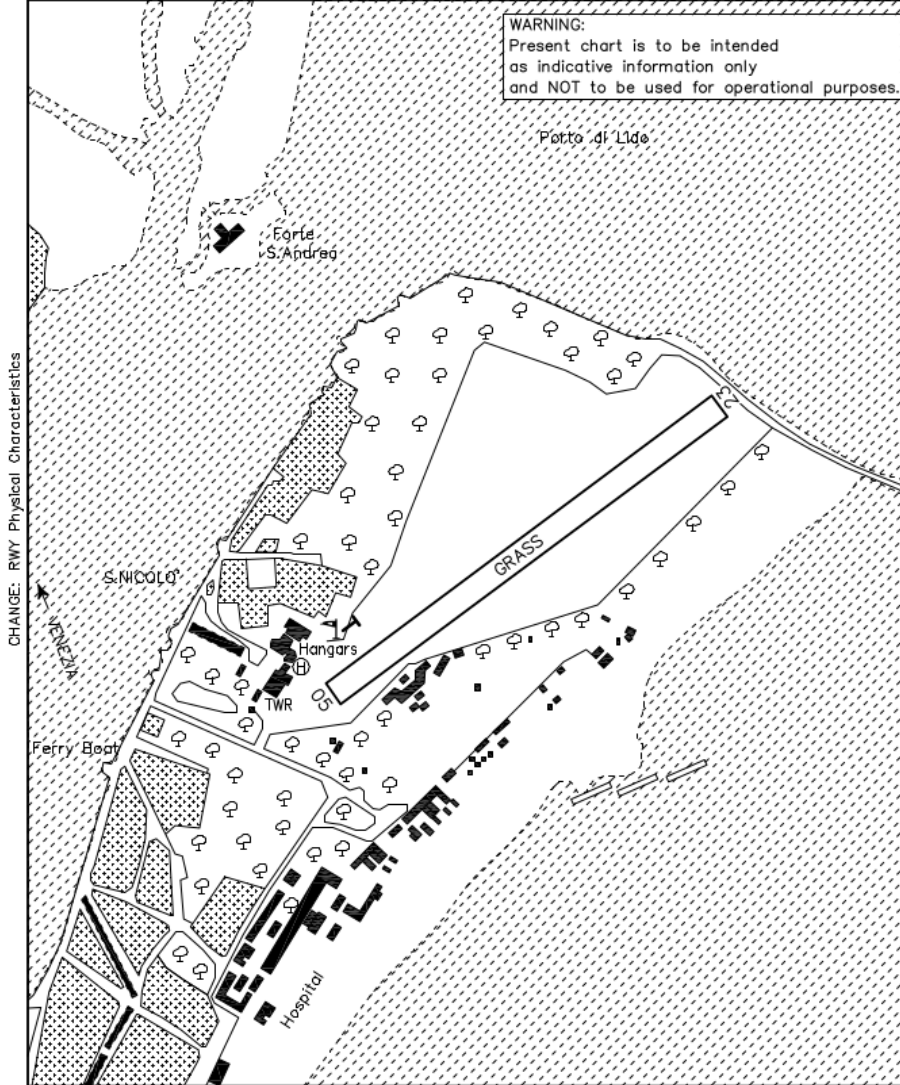




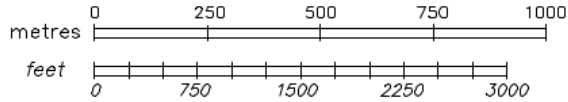
AERODROME LANDING CHART

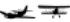
AD Operative Hours	Traffic Circuit	Venezia APP 118.900	Aerodrome Elevation	L I P V	VENEZIA/LIDO
See relevant AD pages	Always South of RWY	AFIS 118.525	13 Ft		
45°25'44" N 012°23'16" E					

WARNING:
Present chart is to be intended
as indicative information only
and NOT to be used for operational purposes.



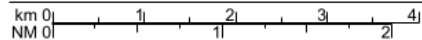
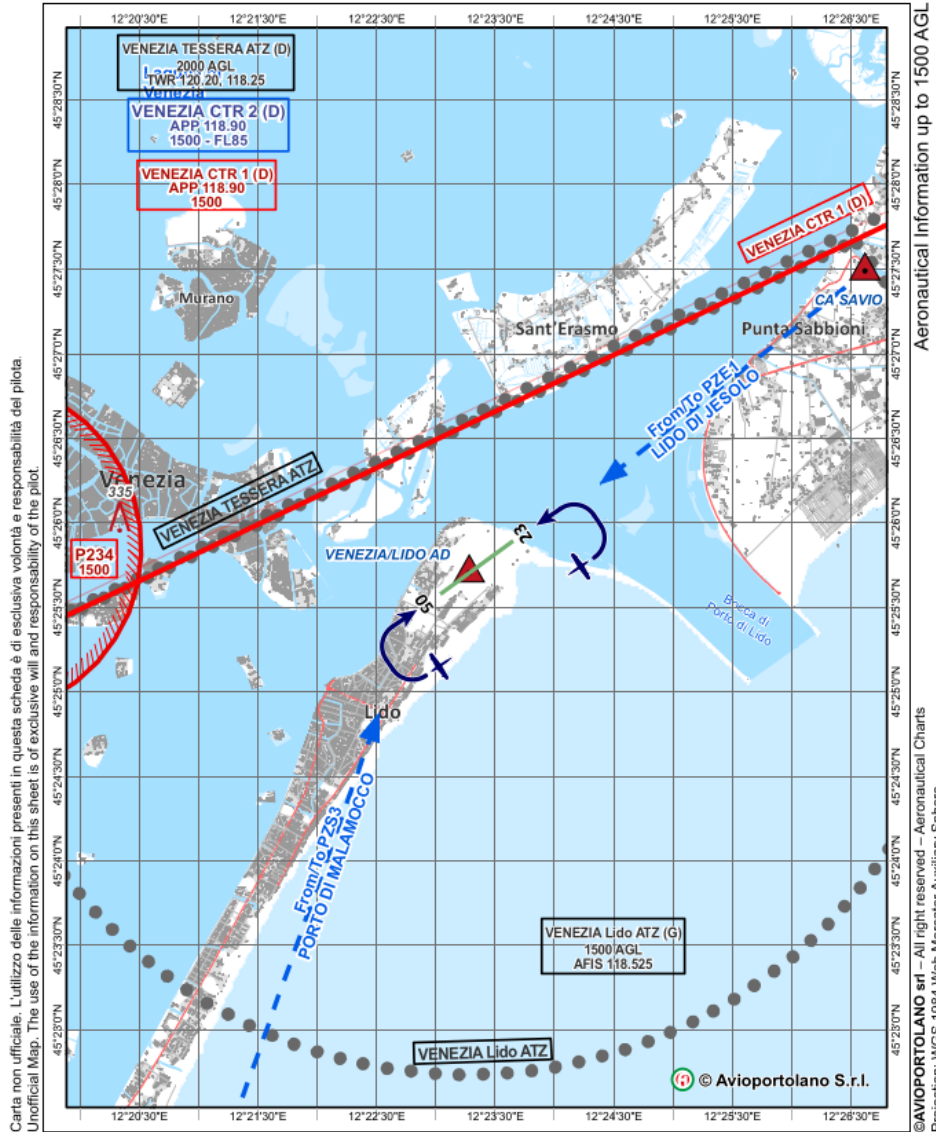
CHANGE: RWY Physical Characteristics



Aeroporto Civile 
Civilian AD

LIPV (VE06)
ELEV 10ft / 4m

Venezia/Lido
Lido di Venezia
ITALIA



scale 1:75,000

Crew 7: LFLS to LSGS with F-GNXT

Augustin Chatain





LFLS - LSGS

GRENOBLE - SION

F-GNXT
Augustin Chatain



COPYRIGHT MARC ULM

AIRLINERS.NET

THE AIRCRAFT AND EQUIPMENTS

DR400 155CDI
JET A1 (110L)
Plafond 16 500 ft
Masse Max 1100kg
Conso Cruise 23 l/h

Vr: 61 KIAS
Vx: 68 KIAS

LIMITATIONS

UTILISATION AUTORISEE

VITESSES LIMITES	km/h	KIAS
Vne, à ne jamais dépasser	270	146
Vno, maxi d'utilisation normale	260	140
Va, maxi de manoeuvre	215	116
Vfe, maxi volets sortis	170	92

Tableau 2-1 - Vitesses limites

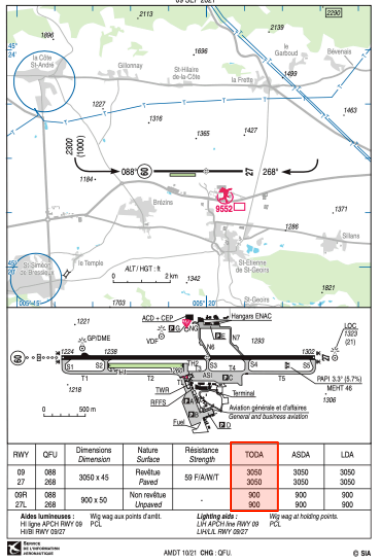
Altitude Pression (ft)	Pce %	Vitesse propre		Conso l/h	Réservoir standard 109 litres		Réservoirs Std. + Aux 159 litres	
		km/h	KTAS		Nm	heures	Nm	heures
8000	90	241	130	29,6	348	2,6	568	4,2
8000	80	228	123	25,8	390	3,0	628	5,0
8000	70	213	115	22,1	437	3,7	696	5,9
8000	60	194	105	18,6	489	4,5	772	7,2
8000	50	174	94	15,3	544	5,6	850	8,9
10000	90	244	132	29,6	350	2,5	573	4,2
10000	80	232	125	25,8	391	2,9	633	4,9
10000	70	215	116	22,1	438	3,6	701	5,8
10000	60	196	106	18,6	489	4,4	775	7,1
10000	50	176	95	15,3	541	5,5	850	8,7

- ASPEN
- EFD1000
- Electric flaps
- Electric trim

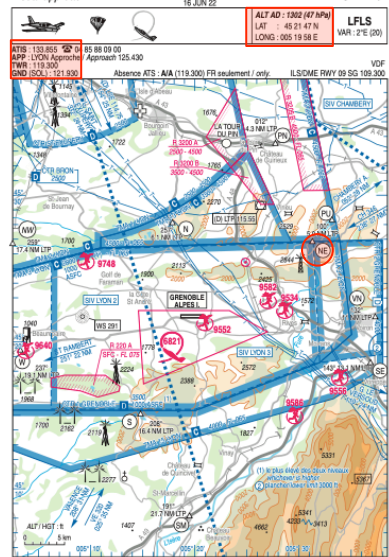


DEP / ARRIVAL AIRFIELDS

GRENOBLE ALPES ISERE
AD 2 LFLS ATT 01



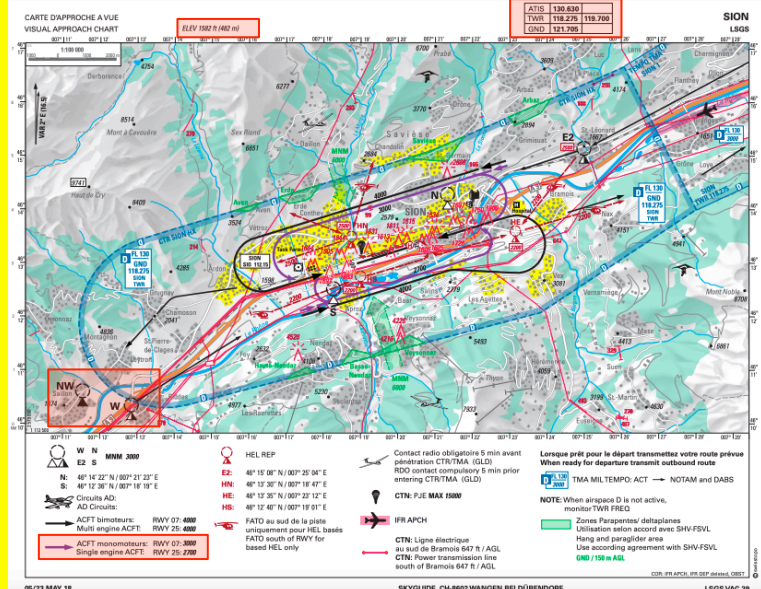
APPROCHE A VUE
Visual approach



APR-SEP: 0500Z - HRH, MAX 1800Z
OCT-MAR: 0700Z - HRH, MAX 1900Z

REPORTING POINTS

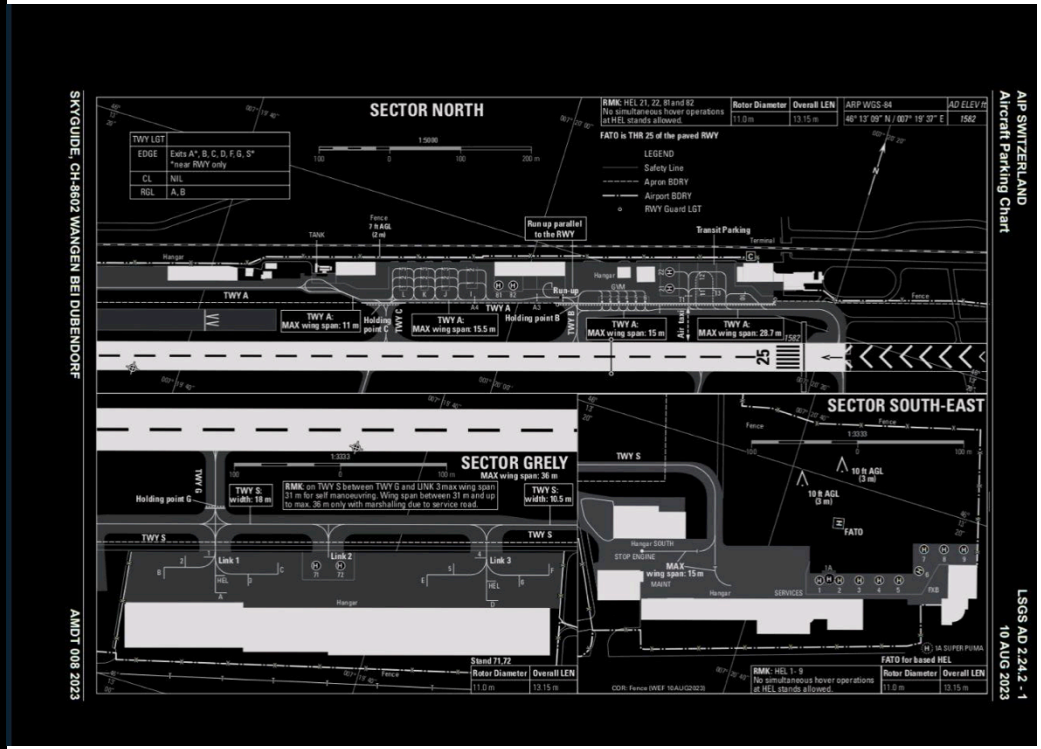
N (November) point is used when runway 25 is in use.
S (Sierra) reporting point is used when runway 07 is in use



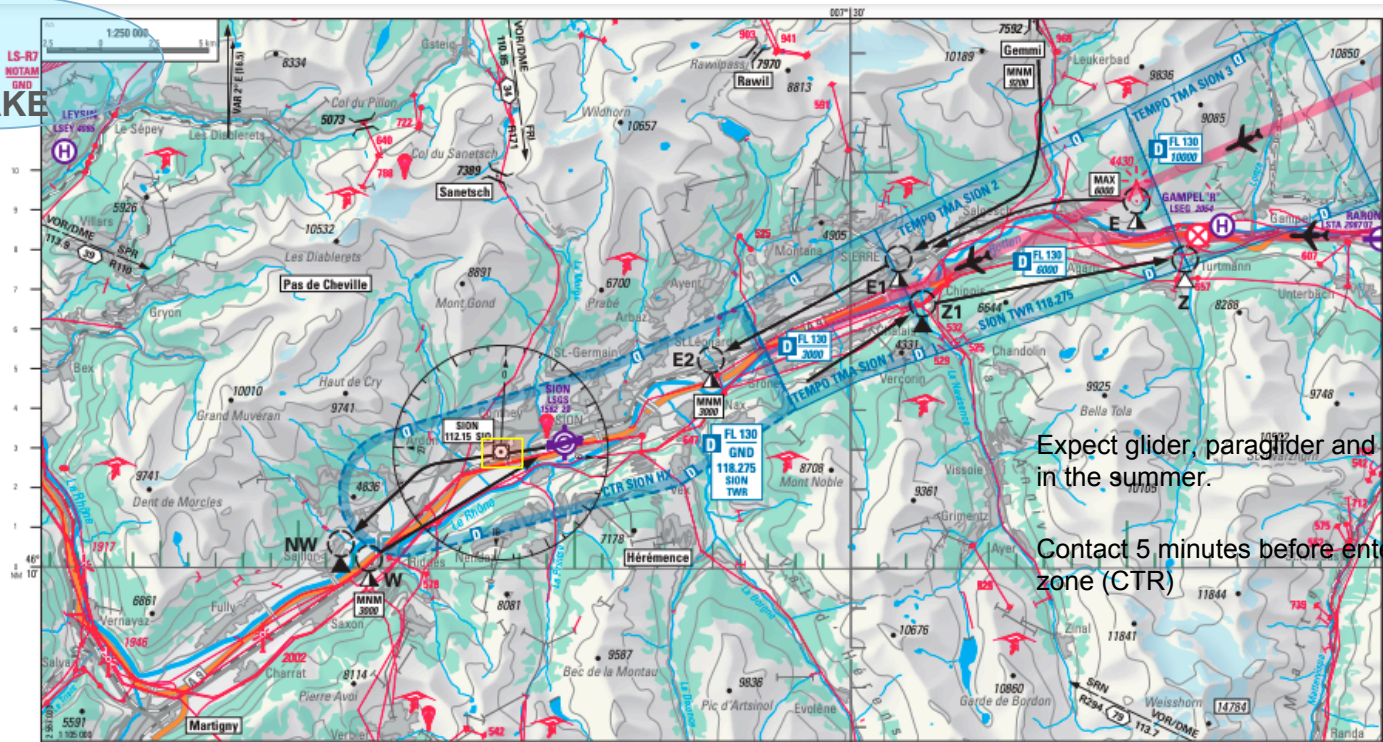


RWY Designator	TORA (m)	TODA (m)	ASDA (m)	LDA (m)	Remarks
07	2000	2060	2000	1935	Max length
	1500	1560	1500	Not applicable	Intersection H
	1150	1210	1150	Not applicable	Intersection G
25	2000	2060	2000	1940	Max length
	1800	1860	1800	Not applicable	Intersection E
	1625	1685	1625	Not applicable	Intersection B
	1355	1415	1355	Not applicable	Intersection C
	1330	1390	1330	Not applicable	Intersection F
07 GRASS	560	560	560	660	Only VFR operations (see LSGS AD INFO)
25 GRASS	660	660	660	560	

LSGS: SION
 SION, VALAIS, SWITZERLAND



GENEVA LAKE



Expect glider, paraglider and hang-glider activity in the summer.

Contact 5 minutes before entering the control zone (CTR)

Premier contact radio obligatoire
First RDO contact compulsory

- Martigny
- Pas de Cheville
- Sanetsch
- Rawil
- Gemmi
- Hérémece

ou 5 min avant pénétration CTR/TMA
or 5 min prior entering CTR/TMA

Atténuation du bruit:

La descente doit être planifiée de façon à ne pas atteindre l'ALT MNM avant le REP; tout en tenant compte de la sécurité.

Noise abatement:

The descent has to be planned so as to reach the MNM ALT not before REP, safety requirements considered.

- NW: 46° 10' 36" N / 007° 11' 33" E
- Z: 46° 17' 46" N / 007° 42' 09" E
- Z1: 46° 16' 40" N / 007° 32' 37" E

- Routes d'arrivée / arrival routes:
- E: E1 - E2
- Gemmi: Gemmi - E1 - E2
- Route de départ / departure route:
- Z: Z1 - Z

IFR APCH



Obligatoire seulement pour arrivée
Compulsory for ARR only

- W: 46° 10' 20" N / 007° 12' 51" E
- E: 46° 19' 15" N / 007° 40' 24" E
- E1: 46° 17' 50" N / 007° 31' 35" E
- E2: 46° 15' 08" N / 007° 25' 04" E



TMA MILTEMPO: ACT → NOTAM and DABS

Pour les départs en direction du Nord par la route Z, la traversée de la vallée du Rhône nécessite une autorisation ATC
Departures to the North via route Z require a ATC clearance to cross the Rhone valley.

- CTN: Route Gemmi: Altitude MNM recommandée pour passer le col de la Gemmi **9200**
- CTN: Route-Gemmi: MNM recommande ALT over Gemmipass **9200**



HEL ARR/DEP → VAC

NOTE: Lorsque l'espace de classe D n'est pas actif, rester à l'écoute de la fréquence Tour
NOTE: When airspace D is not active, monitor TWR FREQ

LOG DE NAV

Departure: NE

CRUISE ALT: 10,000 ft

Arrival: NW

Alternate: LFKA



LSGS — LFLS (Nov 23, 2023) in FGNXT (DR40 - XXXX) VFR
10000'

Created Nov 23 2023 0934Z
Winds Nov 23 2023 0000Z

ETE	Distance	Avg Wind	ETD	ETA	Flight Fuel	Taxi Fuel
0h51m	100NM	7kt tail (035°/009)	0945Z	1036Z	29 l	4 l

Crossed Airspaces:

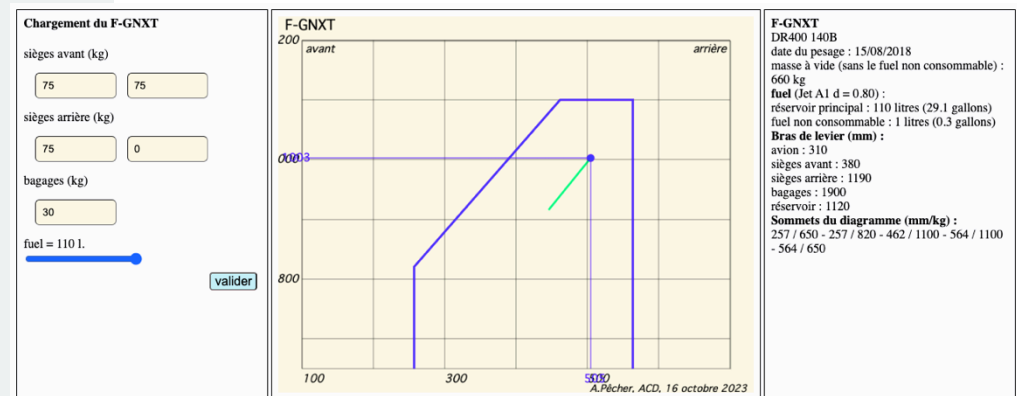
CTR GRENOBLE D -> CHAMBERY TMA E -> (GVA INFO) -> SION CTR D

FUEL

NAV 1h: 25L
Taxi 15mn: 7L
Approach/pattern 15mn: 7L
Nav reserve 10%: 3L
Dégagement LFKA 30mn: 13L
Final reserve 30mn : 13L

Total fuel: 68L

W&B





NOTAMS

Aérodrome d'arrivée : LSGS SION

Installations et services

- ✓ **LSSN-B1345/23**
DU: 21 09 2023 13:29 AU: 30 11 2023 23:59
A) LSGS
Q) LSAS / QFULT / IV / NBO / A / 000/999 / 4613N00720E005
E) SELF SER FUELLING STN NOT AVBL.

Aire de manœuvre

- ✓ **LSSN-B1384/23**
DU: 01 10 2023 05:00 AU: 02 03 2024 07:00
A) LSGS
Q) LSAS / QMRLC / IV / NBO / A / 000/999 / 4613N00720E005
E) GRASS RWY 07/25 CLSD.

Organisation de l'espace aérien et services de la circulation aérienne

- ✓ **LSSN-B1532/23**
DU: 13 10 2023 11:46 AU: PERM
A) LSGS
Q) LSAS / QCAXX / IV / NBO / AE / 000/999 / 4613N00720E005
E) REF AIP PAGE LSGS AD 2-9
PARAGRAPH LSGS AD 2.18 ATS COMMUNICATION FACILITIES
ITEM TWR COLUMN REMARKS
SHOULD READ:
LANGUAGE: EN(SEMICOLON) EN AND FR FOR NON-COMMERCIAL VFR TRAFFIC
INSTEAD OF
LANGUAGE: EN(SEMICOLON) EN AND GE FOR NON-COMMERCIAL VFR TRAFFIC



WEATHER

LSGS SION

METAR

METAR LSGS 231020Z 13004KT 080V170 CAVOK 04/00 Q1027=

TAFC

TAF LSGS 230825Z 2309/2318 VRB02KT CAVOK=

OTHER NOTICES



IMMIGRATION INFORMATION

TO BE SENT TO : aeroport@sion.ch

Aéroport de Sion
1950 Sion
Tel +41 27 329 06 00
Fax +41 27 329 06 16
Email : aeroport@sion.ch

<input type="checkbox"/> INBOUND	LSGS / SION
<input type="checkbox"/> OUTBOUND	
Date of flight :	UTC time : <i>HH :MM</i>

<input type="checkbox"/> Airplane, type :	State of flight :	<input type="checkbox"/> Commercial (N, S)
<input type="checkbox"/> Helicopter, type :		<input type="checkbox"/> Private (G)
		<input type="checkbox"/> HOSPITAL (X)
		<input type="checkbox"/> TRAINING (X)

REGISTRATION :	FROM / TO	ICAO	COUNTRY
----------------	-----------	------	---------

CREW / DETAILS					
FONCTION	FIRST NAME	LAST NAME	DOB	ID NUMBER	NATIONALITY

PAX NUMBER :				
FIRST NAME	LAST NAME	DOB	ID NUMBER	NATIONALITY

Customs declarations for cross-border flights

must always take off from and land at a customs airfield



LSGS Website with informations

<https://www.sionaeroporto.ch/en/pilot-info/>

Session Planning (*aspirational*)



9 November	The FCL055 Rating, Course structure, Presentation of Participants, Information Resources, Sample Practice Flight
16 November	Flight Crews, ATC Overview, Numbers, ATIS Structure, Sample Flight Briefing.
23 November	Flight Briefings by Crews 1 to 7
30 November	Flight Briefings Crews 8 and 9, Taxi and Departure Clearances, Sample Clearance and Taxi Script
07 December	Taxi Scripts, Pattern Terminology, Pattern Reporting, Sample Script
14 December	Pattern Practice, Weather Charts, Sample Departure scripts.
21 December	Departure Scripts, Air spaces and airways, Cross Country Phraseology,
28 December	?
04 January	Enroute Radio Practice, Inflight Emergencies
11 January	Inflight Emergency Practice, ATIS practice, Arrival and Approach
18 January	Arrival Briefings, Landing, Refueling and Taxi to Parking.
25 January	Class Debriefings, FCL 055 VFR test preparation.