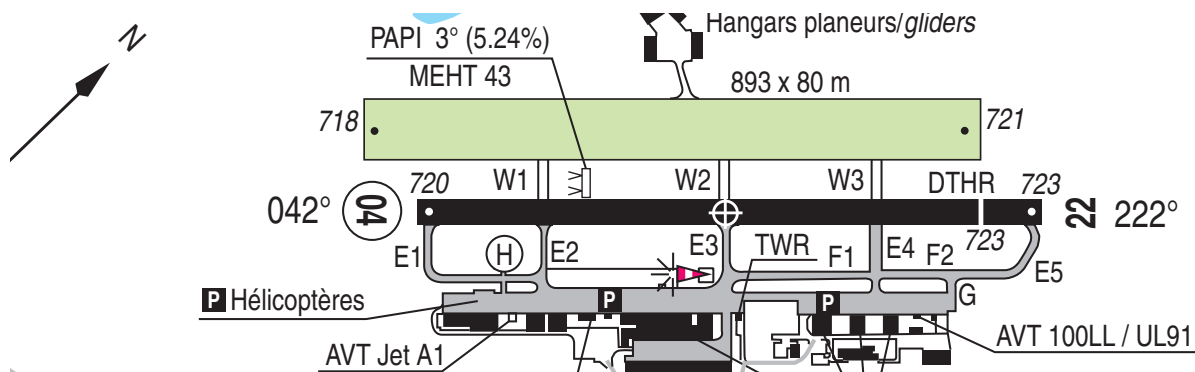


Script for Closed Circuit Traffic at LFLG



Pilot: Le Versoud Ground, Robin F-GTPT. Good Morning

Ground: F-GTPT, Le Versoud Ground. Pass your message

Pilot: Le Versoud Ground, Robin F-GTPT on the apron, request taxi to Runway 04 for closed traffic with information Bravo

Ground: F-PT Taxi to Holding Point E1. Contact Tower when ready on 121.0

Pilot: Taxiing to Holding Point E1, will contact Tower when ready on 121.0, Robin F-PT

...

Pilot: Le Versoud Tower, Robin F-GTPT Holding Point E1 Runway 04. Closed traffic. Ready for Departure.

Tower: F-PT, Le Versoud Tower. Closed traffic approved, Runway 04 Cleared for takeoff, wind calm, report downwind Runway 04 abeam the tower

Pilot: Taking off Runway 04 . Will report downwind Runway 04 abeam the tower. Robin F-PT

...

Pilot: Robin F-PT downwind Runway 04 for a touch-and-go.

Tower: F-PT, Number 3, Report end of downwind

Pilot: Number 3, will report end of downwind, Robin F-PT

...

Pilot: Robin F-PT end of downwind

Tower: F-PT, number 2, landing aircraft on short final, report final.

Pilot: Number 2, will report final, Robin F-PT

...

Pilot: Robin F-PT Final Runway 04 touch-and-go.

Tower: F-PT, Cleared touch-and-go Runway 04. Report downwind Runway 04. Le Versoud Tower.

Pilot: Touch-an-Going, Runway 04. Will report downwind Runway 04. Robin F-PT.