



Aéro Club Dauphiné
Aviation English Master Class
Session 3

James Crowley
and the ACD FCL055 team

<http://crowley-coutaz.fr/jlc/FCL055>

Radio Practice Speaking Order

No.	Pilots
1	JA
2	HBF
3	FB
4	JCE
5	JG
6	JYL
7	HM
8	FM
9	PP
10	GRP
11	JT1
12	JT2
13	JPT
	ATC
1	MP
2	MS

Session Planning (*revised*)



- | | |
|-----------|---|
| 17 March | The FCL055 Rating, Course structure, Presentation of Participants, Information resources, ATIS, AWOS and ASOS |
| 24 March | Formation of flight crews, ATIS practice, Sample preflight briefings |
| 31 March | Preflight Briefings |
| 7 April | Radio Communication rules and practice for Taxi and Departure |
| 14 April | ACD – General Assembly (no session) |
| 21 April* | Airfield briefings. Radio practice: flying the pattern, War stories |
| 28 April | Enroute briefings, Radio Practice: Enroute Position Reporting.
100 Hamburgers |
| 5 May | Abnormal and Emergency Situation, Radio Practice: emergency situations, Human Factors, war stories |
| 12 May | Arrival Briefings, Radio Practice: Arrival, Landing, Fuel and Parking
War Stories. |
| 19 May | FCL 055 VFR practice Exam |

*Jim in Texas

Aviation English Master Class



- Preflight Briefings
- Next Week: Radio Communications rules for Ground and taxi

Flight Crews and Trips



Team	Names	Call Sign	Type	Departure	Destination
1	XXXXXXXXXX XXXXXXXXXX	F-HGPC	DR401	LFHE	LFMD
2	XXXXXXXXXX XXXXXXXXXX	F-PSCZ	EUPA	LFLG	LIMA
3	XXXXXXXXXX XXXXXXXXXX	F-GGSL	DR400	EGLK	LFLS
4	XXXXXXXXXX XXXXXXXXXX	F-GTPT	DR400	LIMW (Aosta)	LSZL (Lucarno)
5	XXXXXXXXXX XXXXXXXXXX	F-HCEN	DR435	LFLG	LSGL
6	XXXXXXXXXX XXXXXXXXXX	F-GSRE	DR460	LSGL	EGPF
7	XXXXXXXXXX XXXXXXXXXX	F-GSCD	D140	LFLG	Chamois

Anonymised for publication.

Team 1: LFHE-LFMD with F-HGPC

ATERRISSAGE A VUE Visual landing

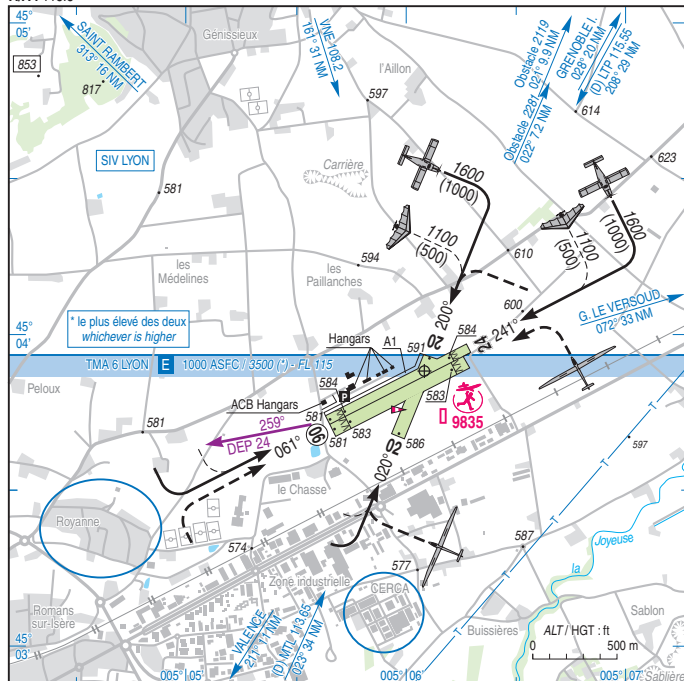
Ouvert à la CAP
Public air traffic
15 AUG 19

ROMANS SAINT PAUL
AD 2 LFHE ATT 01



ALT AD : 595 (21 hPa)	LFHE
LAT : 45 03 53 N	VAR : 1° E (15)
LONG : 005 06 05 E	

APP : NIL
TWR : NIL
AIA : 118.8



RWY	QFU	Dimensions Dimension	Nature Surface	Résistance Strength	TODA	ASDA	LDA
06L 24R	061 241	940 x 50	Non revêtue Unpaved	-	940 940	940 940	820 805
06R 24L	061 241	890 x 80	Non revêtue Unpaved	-	890 890	890 890	770 751
02 20	020 200	500 x 80	Non revêtue Unpaved	-	-	-	500 500

Aides lumineuses : NIL

Lighting aids : NIL

APPROCHE A VUE Visual approach

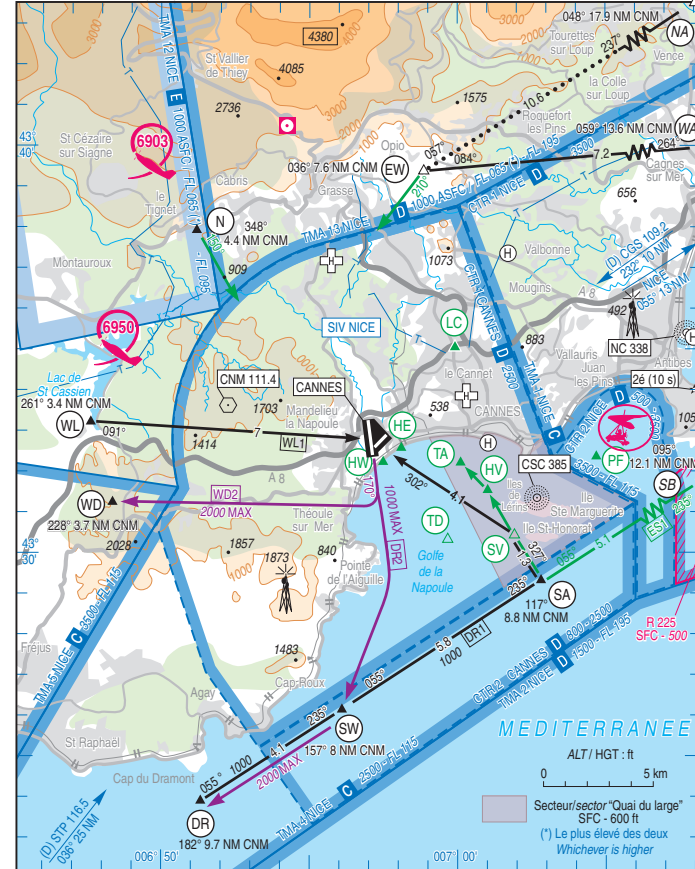
Ouvert à la CAP
Public air traffic
25 MAR 21

CANNES MANDELIEU
AD 2 LFMD APP 01



ALT AD : 14 (1 hPa)	LFMD
LAT : 43 32 47 N	VAR : 2° E (20)
LONG : 006 57 15 E	

ATIS : 130.480 ☎ 04 92 19 94 92 VDF
APP : NICE Approch/Approach 120.655 (1) LOC/DME 110.35
(1) au dessus de 2500 ft sur instruction ATC seulement / above 2500 ft, on ATC instruction only.
TWR : 118.625 - GND (SOL) 121.805 LERINS TWR : 120.780



SERVICE
DE L'INFORMATION
AERONAUTIQUE

AMDT 04/21 CHG : VAR, orientations, TEL ATIS, FREQ LERINS TWR.

© SIA

Team 1: LFHE-LFMD with F-HGPC

DR401-155CDI



Glass cockpit

Garmin GTN650 (MFD)
Aspen EFD1000 (PFD)
SAM MD302 (Backup)

Electric Flaps
Electric Trim

Team 1: LFHE-LFMD with F-HGPC

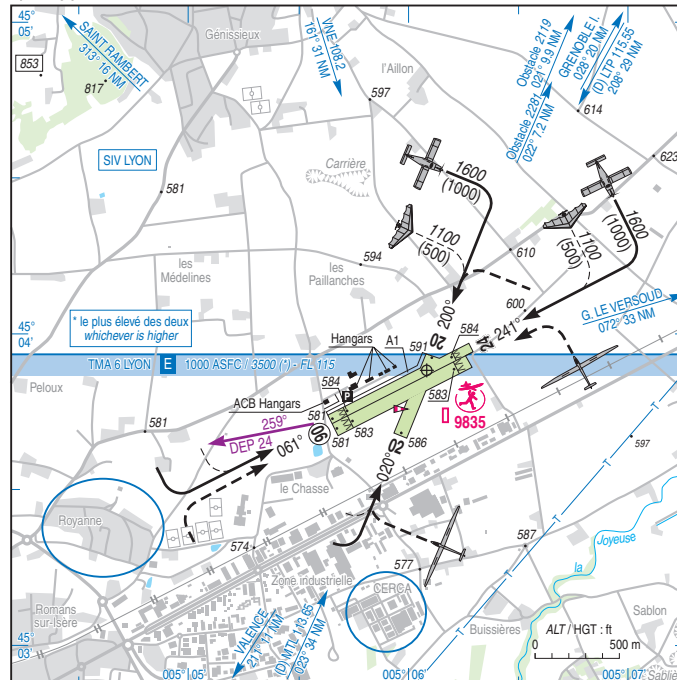
ATTERRISSAGE A VUE
Visual landing

Ouvert à la CAP
Public air traffic
15 AUG 19

ROMANS SAINT PAUL
AD 2 LFHE ATT 01

				ALT AD : 595 (21 hPa) LAT : 45 03 53 N LONG : 005 06 05 E	LFHE VAR : 1° E (15)
---	---	---	---	--	--------------------------------

APP : NIL
TWR : NIL
A/A : 118.8

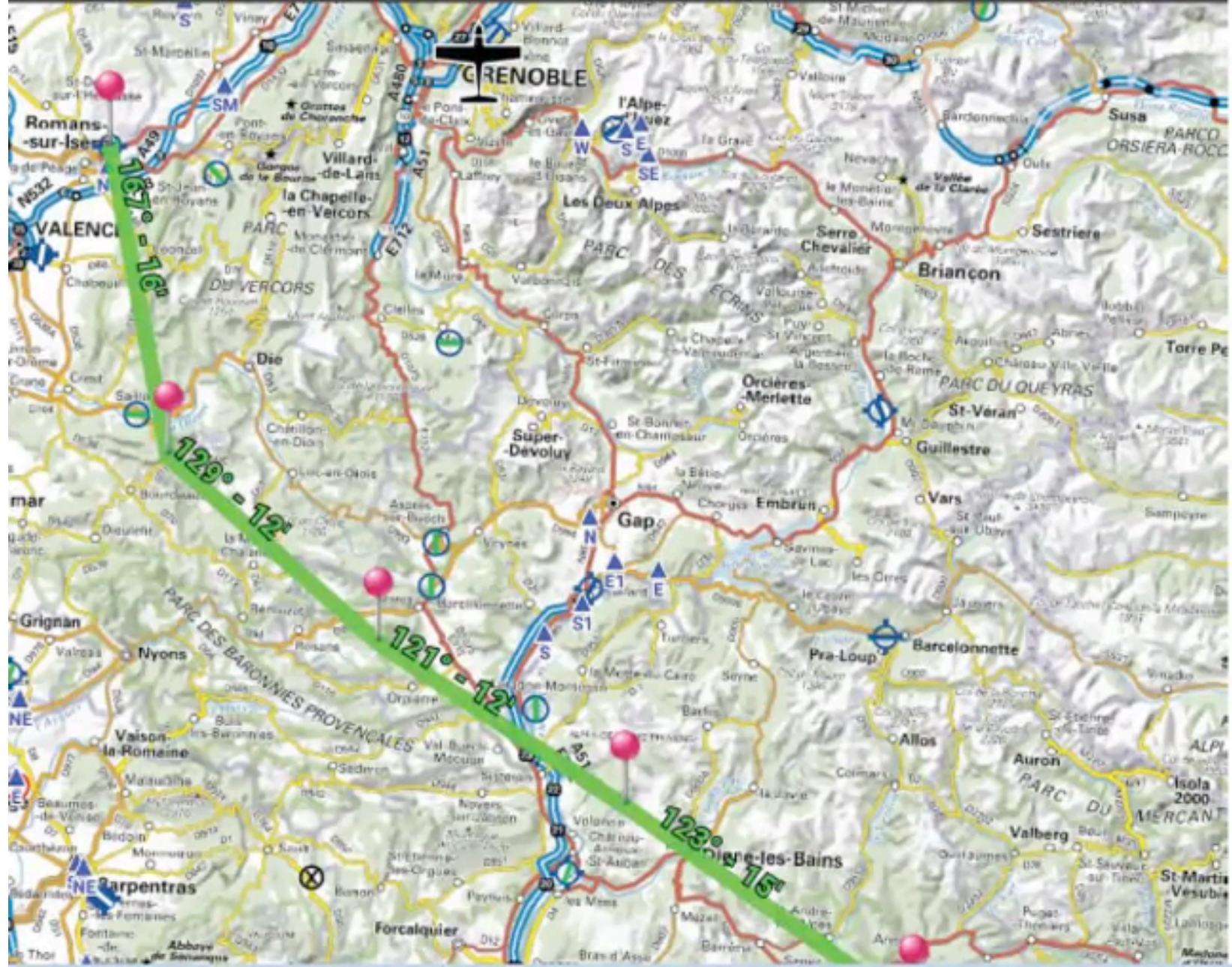


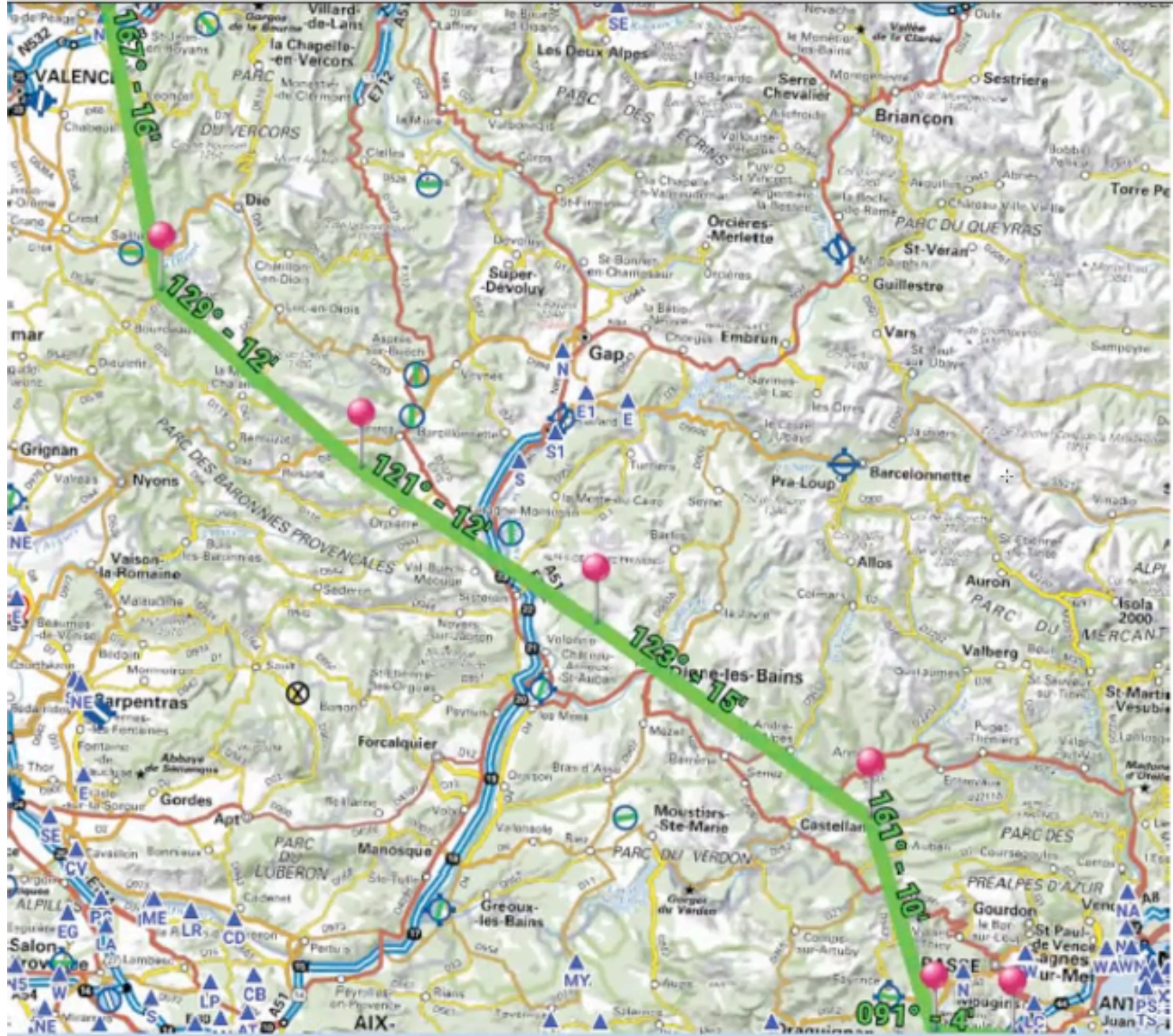
RWY	QFU	Dimensions Dimension	Nature Surface	Résistance Strength	TODA	ASDA	LDA
06L 24R	ACFT 241	940 x 50	Non revêtue Unpaved	-	940 940	940 940	820 805
06R 24L	Planeurs Glders 241	890 x 80	Non revêtue Unpaved	-	890 890	890 890	770 751
02 20	020 200	500 x 80	Non revêtue Unpaved	-			500 500

Aides lumineuses : NIL

Lighting aids : NIL







Z min	DTG	LFHE - ROMANS SAINT PAUL			
↗	0	16'	17'	118.8 LFHE A/A	003° / 6 kts 1°D / 6 kts T
7500	167°	26	17'		
4500		131		BEPER	
↗	26	12'	13'	124.5 MARSEILLE INFO	004° / 11 kts 4°D / 7 kts T
9500	129°	23	13'		
5000		104		RETNO	
→	50	12'	13'	120.55 MARSEILLE IN...	007° / 6 kts 3°D / 3 kts T
9500	121°	25	13'		
5000		81		PERUS	
→	74	15'	15'	120.55 MARSEILLE IN...	321° / 2 kts 0°D / 2 kts T
9500	123°	30	15'		
6500		56		AGEVU	
↘	104	10'	10'	120.85 NICE INFO	197° / 3 kts 1°G / 2 kts H
2500	161°	20	10'		
6000		27		LFMD/WL	
↘	124	4'	4'	118.625 LFMD TWR	077° / 22 kts 3°D / 21 kts H
1500	091°	7	4'		
2000		7		LFMD - CANNES MANDELIEU	
	131	70'	71'	121.805 LFMD GND	
	131		71'		



Devis Carburant

Aérodrome de départ :

LFHE - ROMANS SAINT PAUL

Aérodrome d'arrivée :

LFMD - CANNES MANDELIEU

Aérodrome(s) de dégagement :

Distance totale en Nm :

131

Facteur de base :

0.51

Temps de vol en minute :

71

Conso (l par heure) :

24

Items	Temps	Qté (l)
Roulage (10' par aérodrome)	20	8.0
Délestage trajet *	83	33.2
Marge	0	0.0
Réserve de dégagement	15	6.0
Réserve finale **	30	12.0
Exercices de maniabilité	0	0.0
Carburant supplémentaire	0	0.0
TOTAL :	02H28	60 l

Centrage F-HGPC / DR401-155 en kt

$$CG = 574465.0 \text{ mm.kg} / 1093.0 \text{ kg} = 525.586 \text{ mm}$$

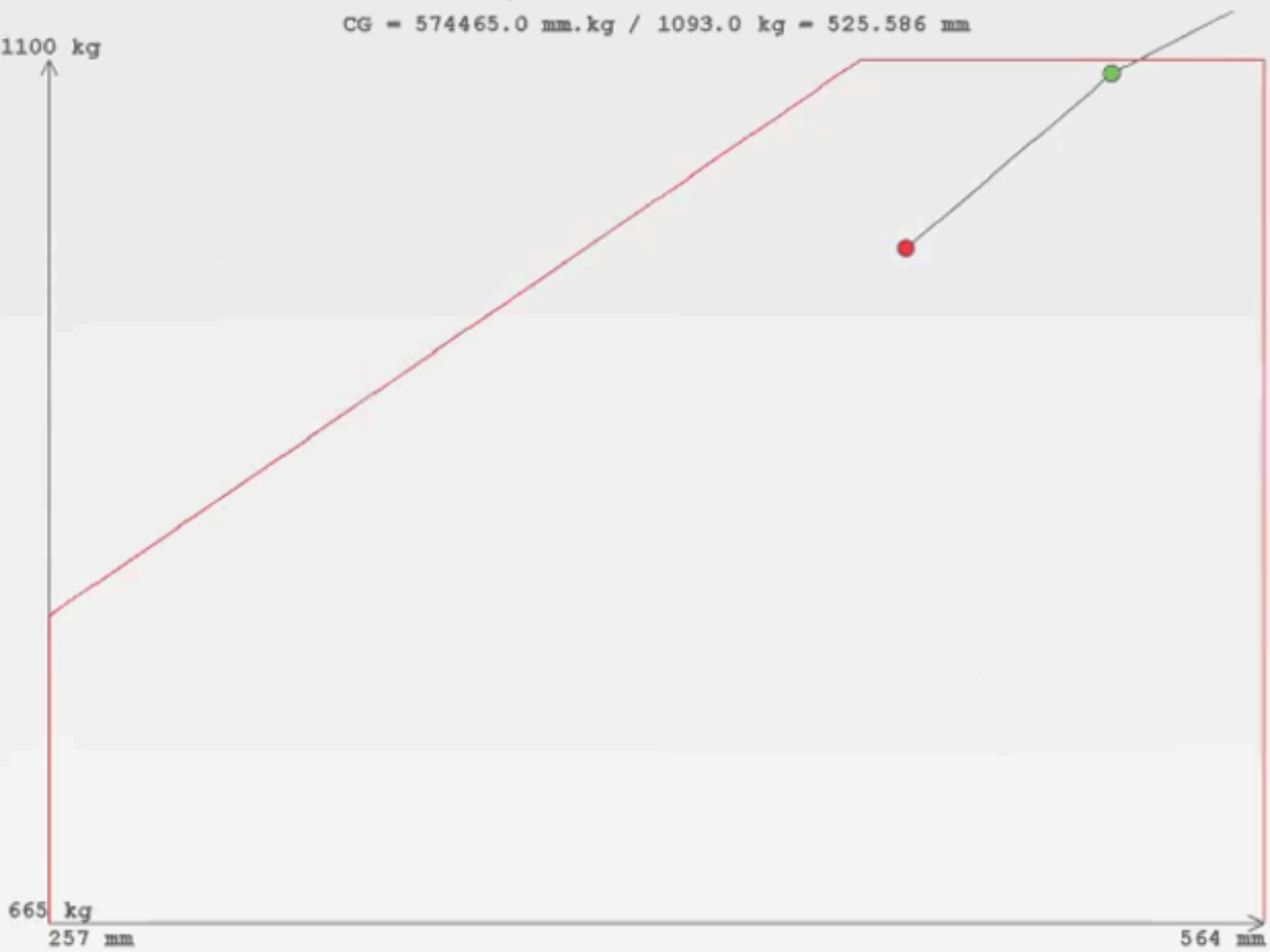
1100 kg



665 kg

257 mm

564 mm



Avion vide



Rang 1 - Equipage

180 kg

73800.0 mm.kg



Rang 2 - Passagers

140 kg

166600.0 mm.kg



Rang 3 - Bagages

20 kg

38000.0 mm.kg



Reservoir principal



21:36

87%



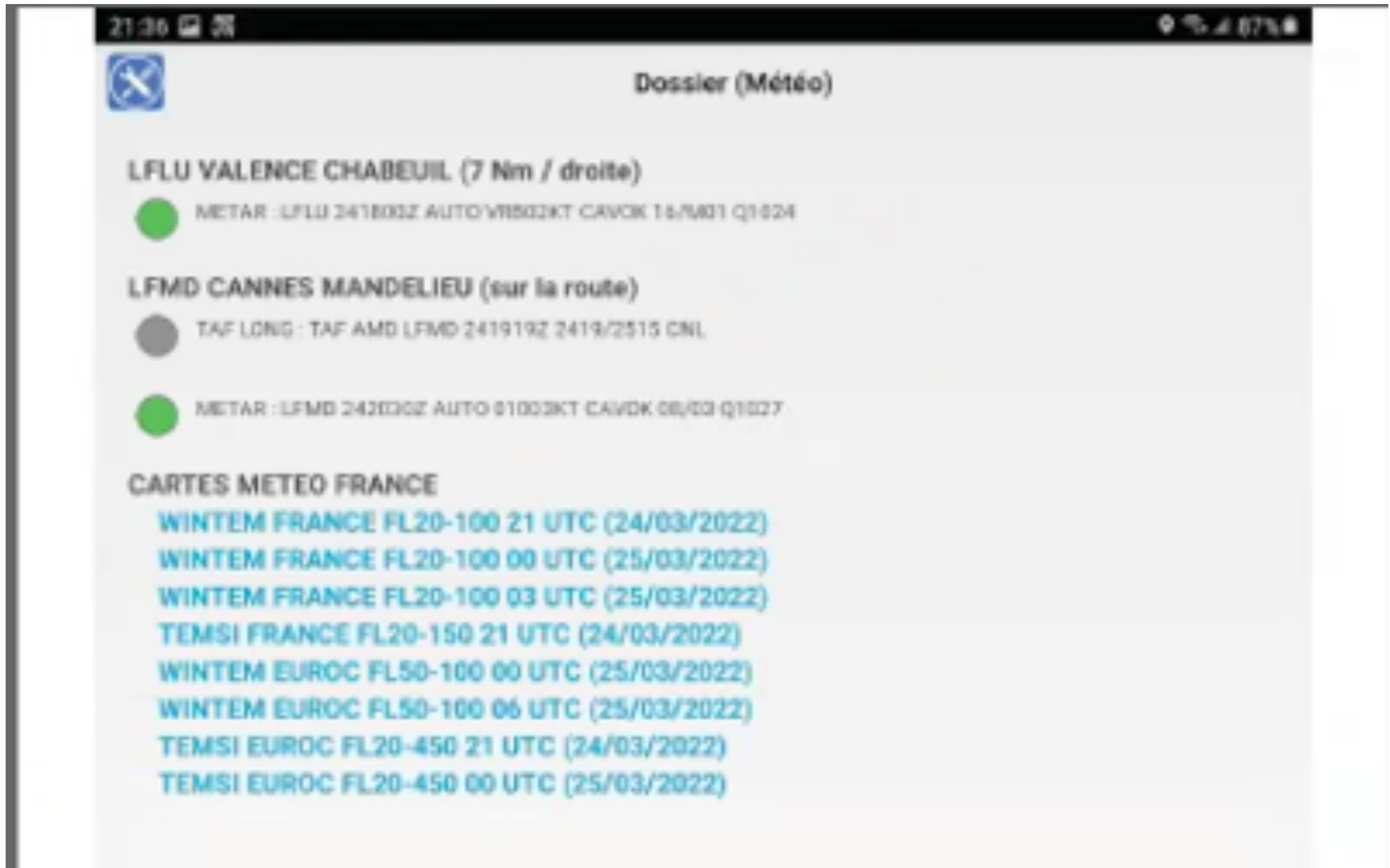
Dossier (Météo)

LFLU VALENCE CHABEUIL (7 Nm / droite)




METAR : LFLU 241800Z AUTO VRB02KT CAVOK 16/M01 Q1024


Team 1: LFHE-LFMD with F-HGPC




21:36 87%


 Dossier (Météo)

LFLU VALENCE CHABEUIL (7 Nm / droite)

 METAR : LFLU 241800Z AUTO VRB03KT CAVOK 16/M01 Q1024

LFMD CANNES MANDELIEU (sur la route)

 TAF LONG : TAF AMD LFMD 241919Z 2419/2515 CNL

 METAR : LFMD 242000Z AUTO 01003KT CAVOK 08/03 Q1027

CARTES METEO FRANCE

- [WITEM FRANCE FL20-100 21 UTC \(24/03/2022\)](#)
- [WITEM FRANCE FL20-100 00 UTC \(25/03/2022\)](#)
- [WITEM FRANCE FL20-100 03 UTC \(25/03/2022\)](#)
- [TEMSI FRANCE FL20-150 21 UTC \(24/03/2022\)](#)
- [WITEM EUROC FL50-100 00 UTC \(25/03/2022\)](#)
- [WITEM EUROC FL50-100 06 UTC \(25/03/2022\)](#)
- [TEMSI EUROC FL20-450 21 UTC \(24/03/2022\)](#)
- [TEMSI EUROC FL20-450 00 UTC \(25/03/2022\)](#)

Team 1: LFHE-LFMD with F-HGPC

21:36 87%

Dossier (Notams)

LFFA-A0565/22
Q) LFVMA/QSELC/V/ B/AE/000/145/4535N00500E030
A) LFLY LYON SAINT EXUPERY
B) 2022 Feb 18 16:32 C) 2022 Mar 27 05:00
D) SUN-FRI 2300-0500, SAT 2130-0500
E) SERVICE D'INFORMATION DE VOL NON ASSURE DANS SIV LYON:
MISE EN SERVICE D'UN RAI 135.200MHZ ET 135.525MHZ. PREVOIR TRANSIT
HORS ESPACES DE CLASSE C ET D
— 1 / 20 —

LFFA-A0996/22
Q) LFVMA/QSEAU/V/ B/AE/000/145/4535N00500E060
A) LFLY LYON SAINT EXUPERY
B) 2022 Mar 27 22:00 C) 2022 Oct 29 04:00
D) SUN-FRI 2200-0400, SAT 2030-0400
E) SERVICE D'INFORMATION DE VOL NON ASSURE DANS SIV LYON:
MISE EN SERVICE D'UN RAI 135.200MHZ ET 135.525MHZ. PREVOIR TRANSIT
HORS ESPACES DE CLASSE C ET D
— 2 / 20 —

LFFA-F0130/22
Q) LFXK/QDCDS/V/ BO/ E/195/660/4411N0020E325
A) LTEE LFFF LFMM
B) 2022 Jan 25 09:51 C) PERM
E) LE SERVICE CPDLC ATC CLEARANCE (ACL) A ETE MIS EN SERVICE DANS
LES UAC PARIS, REIMS ET MARSEILLE RESPECTIVEMENT LES 22/04/2021,
21/10/2021 ET 26/10/2021.
POUR PLUS D'INFORMATION, SE REPORTER A UAIC 008/21.
REFERENCE AIP FRANCE GEN 3.4.
— 3 / 20 —

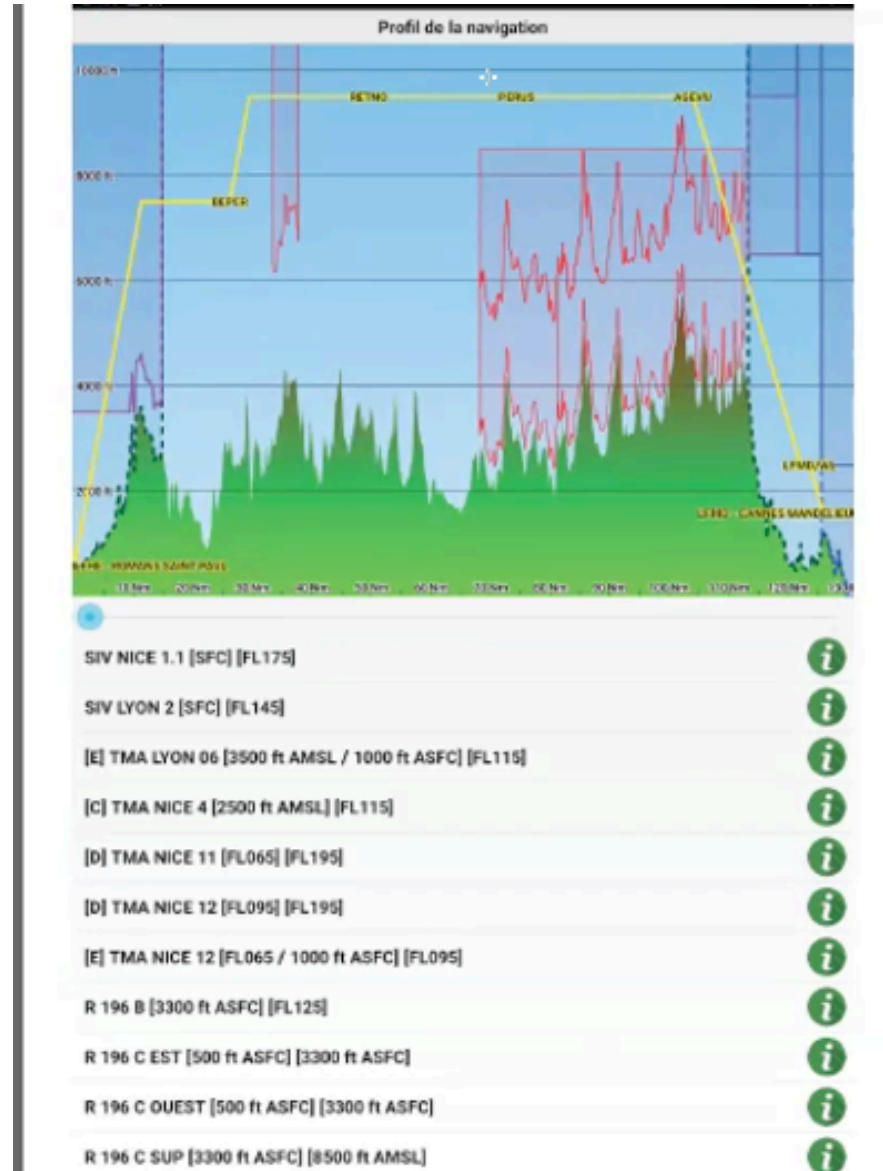
LFFA-F0263/19
Q) LFVMA/QAFXX/V/NBQ/ E/000/195/4246N00607E260
A) LFMM MARSEILLE FIR
B) 2019 Feb 05 14:32 C) PERM
E) VOLS VFR DE NUIT A DESTINATION DE LFMM/FIR EFFECTUES ENTRE
2000/0330 (ETE) OR 2100/0430 (HIV) :
LES PLANS DE VOL ET MESSAGES AFFERENTS DEVRONT ETRE ENVOYES
IMPERATIVEMENT EN PRIORITE 'SS' AUX ADRESSES RSFTA SUIVANTES :
LFMMZKZX AND LFMMZFZX
REF AIP ENR 1.11
— 4 / 20 —

LFFA-F0441/22
Q) LFVMA/QSEAH/V/ B/ E/000/195/4246N00547E255
A) LFMM MARSEILLE FIR
B) 2022 Mar 27 07:00 C) 2022 Mar 31 16:30
E) HORAIRES FONCTIONNEMENT DU CIV MARSEILLE :
- 0700-SS+30 LIMITE A 1630
-INDICATIF : MARSEILLE INFORMATION
-FREQUENCES : 124.500MHZ ET 120.550MHZ.
— 5 / 20 —

LFFA-F0461/22
Q) LFVMA/QNNAS/V/ BO/AE/000/195/4408N00452E025
A) LFMD ORANGE CARITAT
B) 2022 Mar 28 06:00 C) 2022 Mar 28 06:30
E) TACAN ORG CH31X HORS SERVICE (MAINTENANCE); NE PAS UTILISER FAUSSES
INDICATIONS POSSIBLES.
— 6 / 20 —

LFFA-M0751/22
Q) LFVMA/QBRCH/V/ BO/AA/000/145/4603N00528E023

Team 1: LFHE-LFMD with F-HGPC

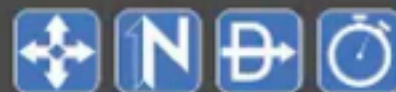




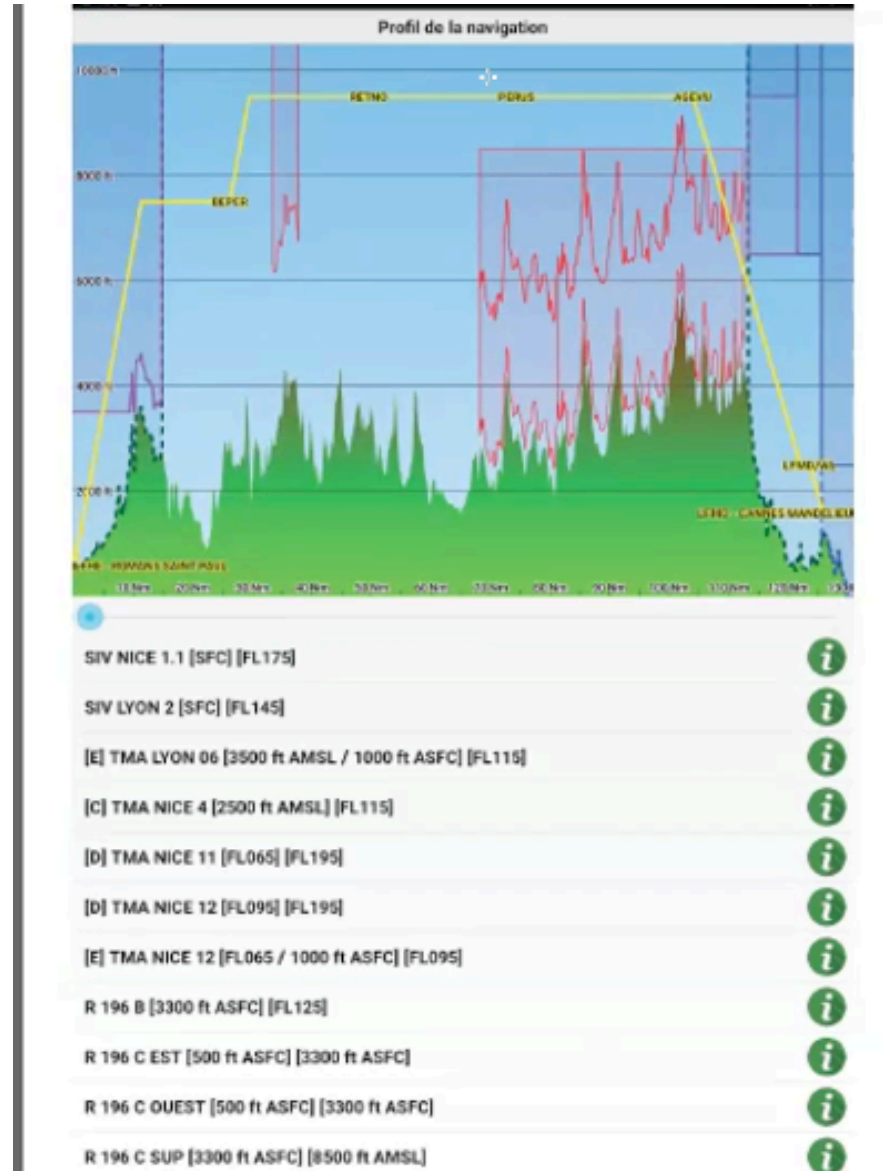
0 kts
732 ft

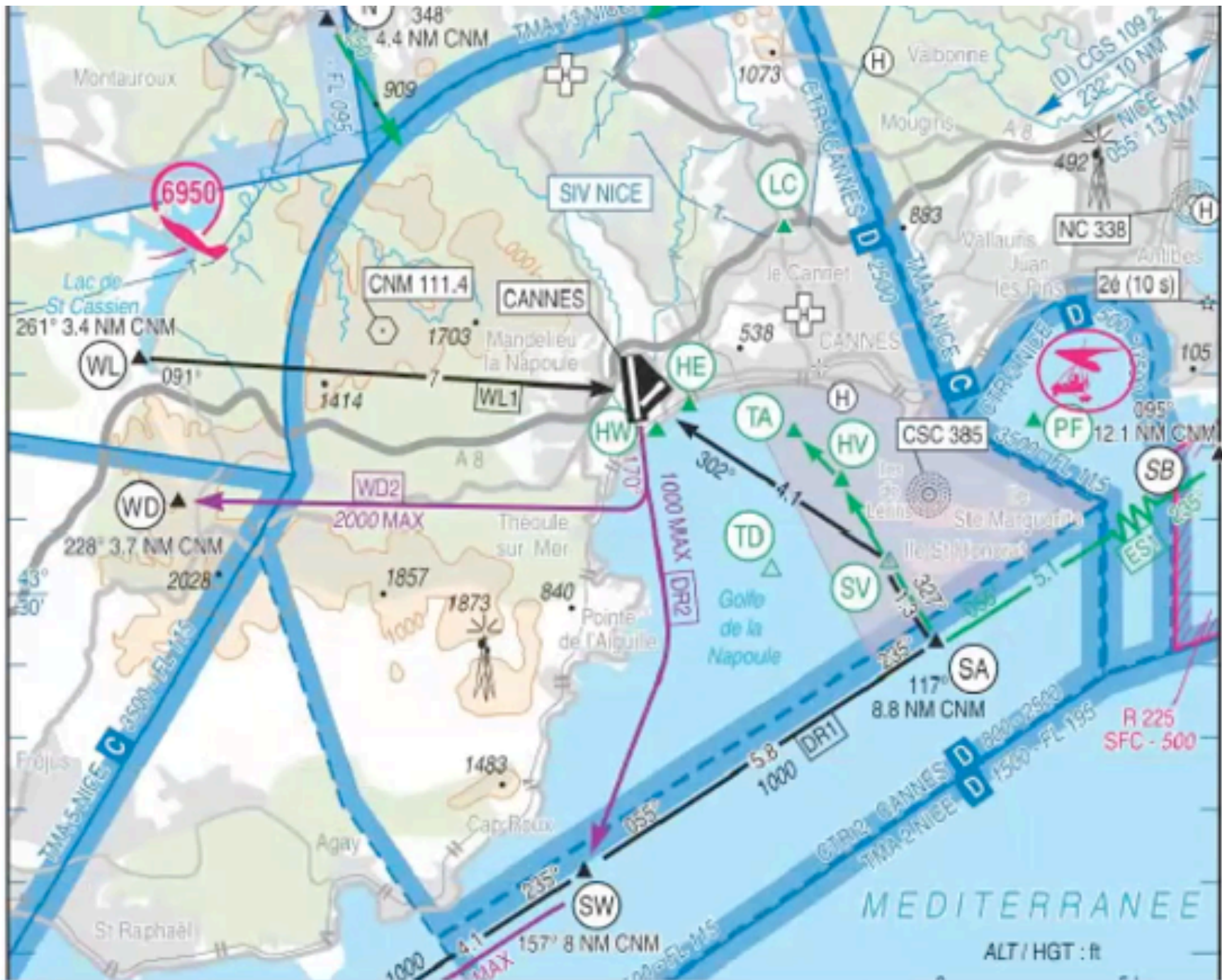
358°
216°

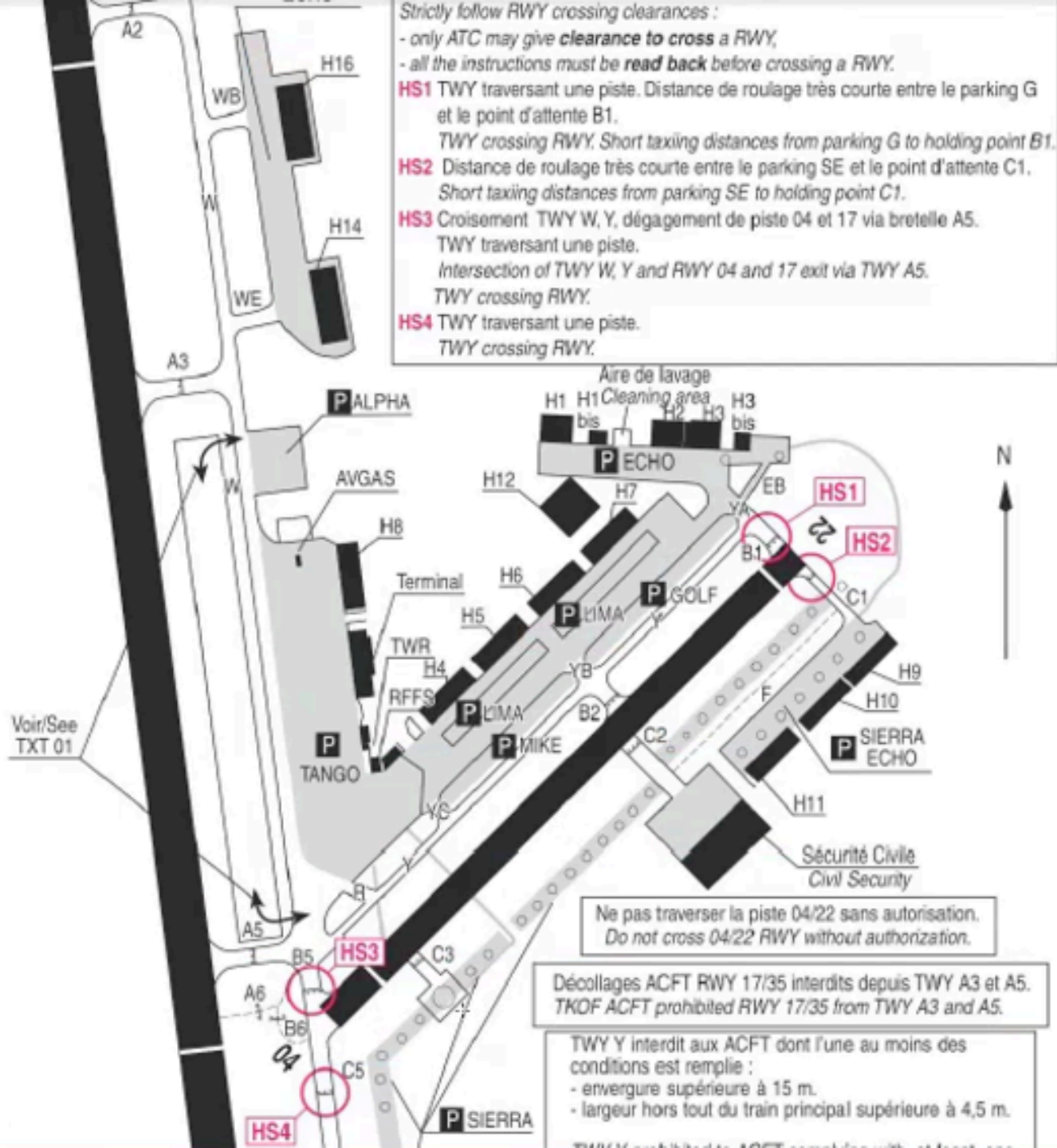
ETA LFMD - CANN
99:99 (99:99)



Team 1: LFHE-LFMD with F-HGPC







Strictly follow RWY crossing clearances :

- only ATC may give **clearance to cross a RWY**,
- all the instructions must be **read back** before crossing a RWY.

- HS1** TWY traversant une piste. Distance de roulage très courte entre le parking G et le point d'attente B1.
TWY crossing RWY. Short taxiing distances from parking G to holding point B1.
- HS2** Distance de roulage très courte entre le parking SE et le point d'attente C1.
Short taxiing distances from parking SE to holding point C1.
- HS3** Croisement TWY W, Y, dégagement de piste 04 et 17 via bretelle A5.
TWY traversant une piste.
Intersection of TWY W, Y and RWY 04 and 17 exit via TWY A5.
TWY crossing RWY.
- HS4** TWY traversant une piste.
TWY crossing RWY.

Voir/See
TXT 01

Ne pas traverser la piste 04/22 sans autorisation.
Do not cross 04/22 RWY without authorization.

Décollages ACFT RWY 17/35 interdits depuis TWY A3 et A5.
TKOF ACFT prohibited RWY 17/35 from TWY A3 and A5.

TWY Y interdit aux ACFT dont l'une au moins des conditions est remplie :

- envergure supérieure à 15 m.
- largeur hors tout du train principal supérieure à 4,5 m.

TWY Y prohibited to ACFT complies with at least one

Team 2: LFLG-LIMA with F-PSCZ



Team 2: LFLG-LIMA with F-PSCZ

12. PERFORMANCES

Divers facteurs affectent les performances de votre EUROPA. Pas de l'hélice, construction standard, poids, technique de pilotage, température, altitude, etc., etc.

Performances de F-PSCZ équipé avec ROTAX 912, 80 H.P., hélice 3 pales de 62" réglée avec un angle de 17° à l'extrémité.

Vitesses

- Maxi (au niveau de la mer) 135 kts
- De croisière (75% à 8000 fts) 130 kts
- De finesse maxi (en lisse) 75 kts
- Du meilleur taux de montée (Vy) 75 kts
- D'angle maxi (Vx) 61 kts
- D'approche (masse maxi, train et volets sortis) 60 kts
- A ne jamais dépasser (VNE) 165 kts
- De manoeuvre (VA) 105 kts
- Maxi de sortie des volets 83 kts

Taux de montée (au niveau de la mer)

- 1 pilote seul 1100 fts/mn
- Masse maxi 800 fts/mn

DIRECTION GÉNÉRALE DE L'AVIATION CIVILE
ÉQUIPEMENT POUR LA SÉCURITÉ
DE L'AVIATION CIVILE
14, RUE ROUGET DE L'ISLE
92441 ISSY-LES-MOULINEAUX

1/2
cerfia
N° 47-0030

RAPPORT DE PESÉE ET CENTRAGE AVION

arrêté du 22 novembre 1978 relatif aux certificats de navigabilité (CDN) Article 11
Modèle de document à associer au CDN ou à inclure dans le manuel de vol de l'aéronef

Aérien Type : EUROPA Date : 12/11/05 (12/02/07) Signature : [Signature]
 Immatriculation : F-PSCZ Lieu : LE VERSAND

1 Mise à niveau : Ref Distance FSO 29,25 D'axe à niveau : Ref Référence : NAUVSE CAPOT MOUVE

Distance du C.G. aux roues principales	Masse à vide (kg)			Distance du C.G. aux roues principales
	Masse lue	Tare	Masse nette	
D1 = $\frac{p \times D}{M} = 13,34$	325,3		325,3	m
à la référence	Roue AR	29,2	29,2	à la référence
x = d + D1 = 60,1	Masse à vide mesurée	M Kg	354,5	x = d + D2 = m

2 CORRECTIONS

	Masse (Kg)	Bras levier (m)	Moments (p. rapport référence) (m x Kg)	
Valeurs lues	325,3	46,75	+ 15208	-
	29,2	212,50	6205	
Résultats corrigés	354,5	60,40	21413	

3 Limites de centrage

	Ex. de chargement		
	Masse (kg)	Bras levier (m)	Moment (m x Kg)
Avion vide	354,5	60,40	21413
Équipage x 77	77	56	4312
Passagers	77	56	4312
Ruages	32	88	2816
Essence	49	76	3671
Huile			
Total	589,8	62,03	36524

Peuée précédente : { Masse vide : 356,5 Kg
Date : 12/31/05 12:01:17

Team 2: LFLG-LIMA with F-PSCZ

F-PSCZ Grenoble Le Versoud - Torino/Aeritalia		PLOG	
AIRCRAFT: F-PSCZ (EUPA)	Startup	Brakes Off	
PILOT: John Archer	Takeoff	Landing	
FUEL REQUIRED 32.0 ltr PLANNED FUEL 56.0 ltr ENDURANCE: 2 hr 51 m	Brakes On	Shutdown	

Elevation 724 ft (26 hPa) SR 05:43 Z, MCT 05:14 Z		MSA	Level	TAS	TrkT	Wind	HdgM	GS	Dist	Time
LFLG Grenoble Le Versoud										
📍 LFKR Saint Remy De Maurienne	10200	8500	130	063	046/02	060	89	20	14	
LFKR Saint Remy De Maurienne										
○ N451341 E0062625	10000	10500	130	142	116/02	139	108	11	6	
N451341 E0062625										
○ N451148 E0063756	11800	10500	130	103	095/05	100	135	8.3	4	
N451148 E0063756										
● Aussois	11800	10500	130	068	103/06	067	144	5.0	2	
Aussois										
📍 LFKD Sollieres Sardieres	13000	8500	130	058	103/06	057	143	3.0	1	
LFKD Sollieres Sardieres										
○ N451731 E0065253	12900	8500	130	056	103/06	055	141	4.1	2	
N451731 E0065253										
○ N451522 E0065425	11300	8500	130	153	103/06	149	140	2.4	1	
N451522 E0065425										
○ N451238 E0065828	12700	8500	130	134	103/06	130	137	4.0	2	
N451238 E0065828										
● Susa	12400	8500	130	141	109/05	137	136	5.6	2	
Susa										
● Sant'Antonino di Susa	10100	5000	130	102	109/05	099	133	9.3	4	
Sant'Antonino di Susa										
📍 MANW1 (Caselette)	6500	2500	130	091	000/00	088	130	8.9	4	
MANW1 (Caselette)										
📍 MASW (Rivoli)	2500	1700	130	149	079/07	143	133	3.2	1	
MASW (Rivoli)										
○ N450352 E0073332	2100	1800	130	081	079/07	078	122	1.6	1	
N450352 E0073332										
○ N450354 E0073707	2300	1800	130	089	081/07	086	125	2.5	1	

N450354 E0073707
 ○ **N450501 E0073722** 2400 **1600** 130 009 081/07 **009** 130 1.1 1

N450501 E0073722
 🌐 **LIMA Torino/Aeritalia** 2300 **1400** 130 274 081/07 **272** 138 0.8 0

Elevation 943 ft (34 hPa) **92 46**
 SS 17:39 Z, ECT 18:08 Z

LFLG Grenoble Le Versoud

LE VERSOUD Tour 121.000

ATIS 125.230

LE VERSOUD Sol 121.655

Flight Information Service

Lyon Info 135.525

Marseille Info 124.500

LFKR Saint Remy De Maurienne

Saint Remy De Maurienne 123.500

LFKD Sollieres Sardieres

Sollieres Sardieres 123.500

Flight Information Service

Milano Information 124.925

TO26 Valsusa

Valsusa Radio 130.000

TO06 Prealpi-Musinè

Prealpi-Musinè Radio 130.000

Torino 1 CTR

Torino Approach 129.275

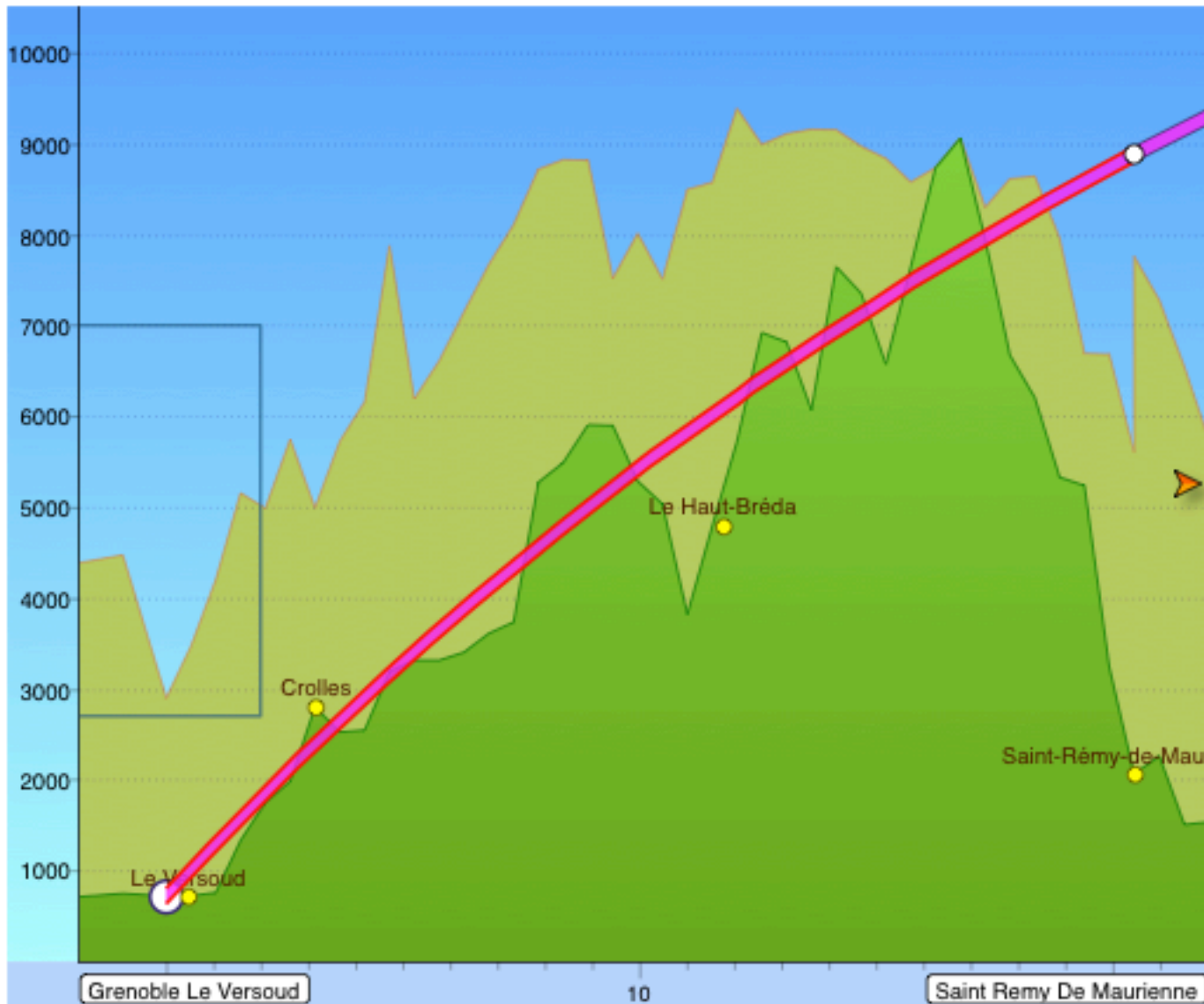
Torino Radar 129.275

LIMA Torino/Aeritalia

Aeritalia aerodrome
 Information 119.800

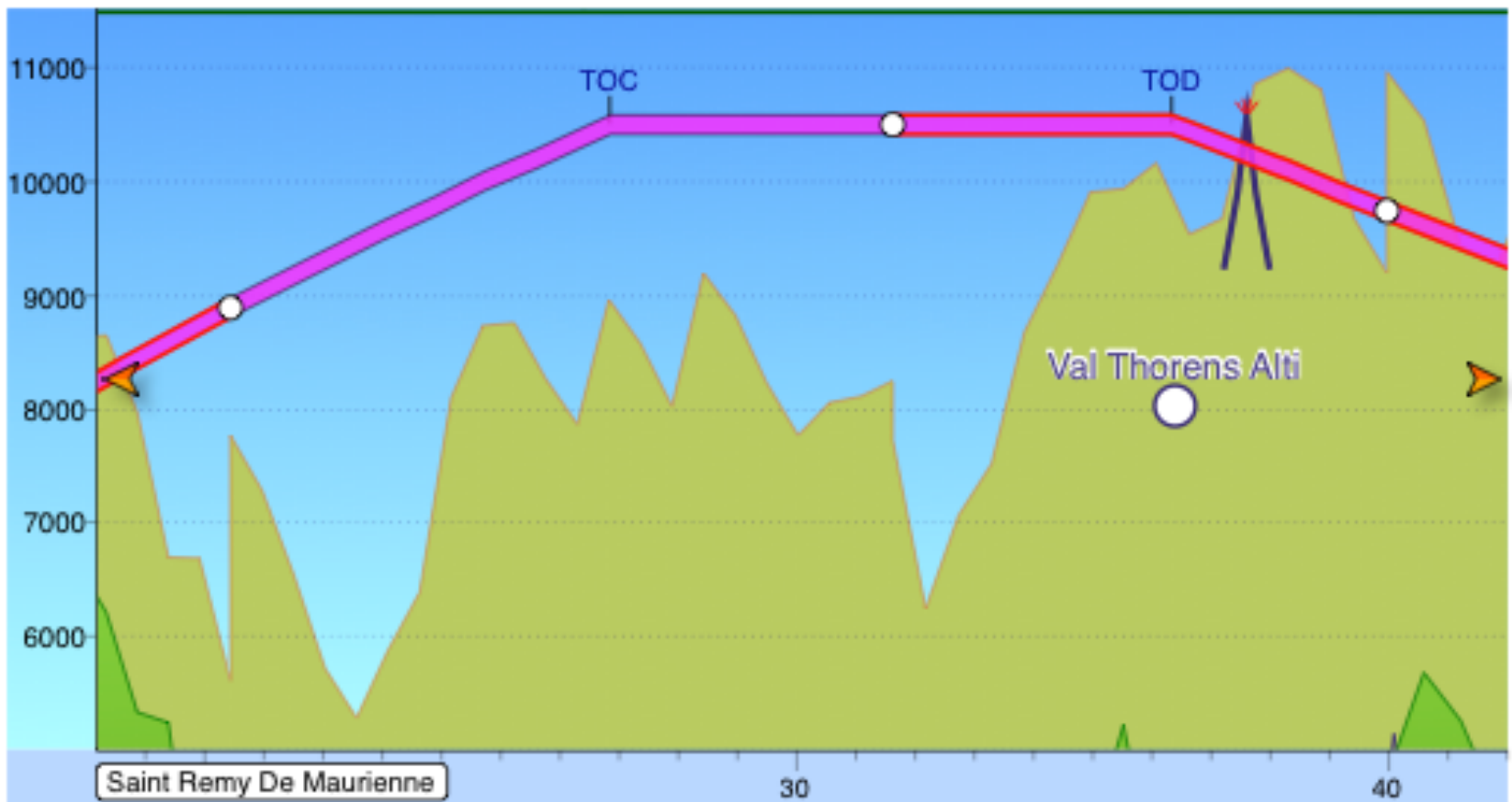


F-PSCZ Grenoble Le Versoud - Torino/AeritaliaVirtual Radar (1/4)



Team 2: LFLG-LIMA with F-PSCZ

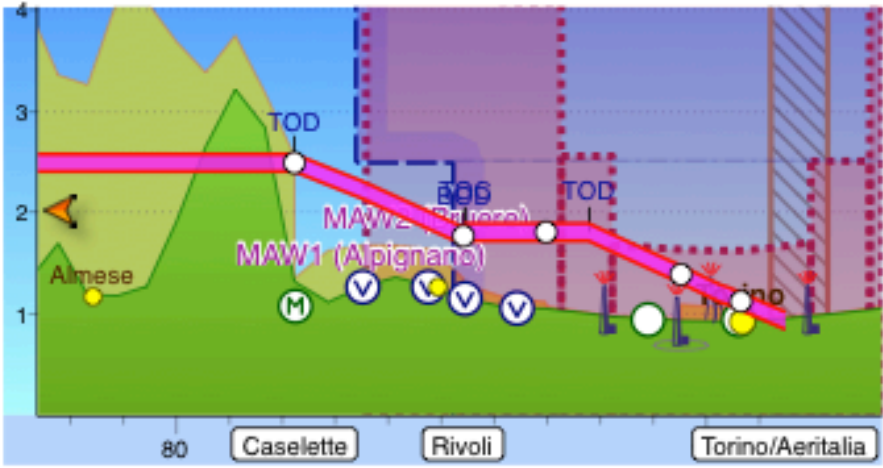
 F-PSCZ Grenoble Le Versoud - Torino/AeritaliaVirtual Radar (2/4)



F-PSCZ Grenoble Le Versoud - Torino/AeritaliaVirtual Radar (3/4)



F-PSCZ Grenoble Le Versoud - Torino/AeritaliaVirtual Radar (4/4)

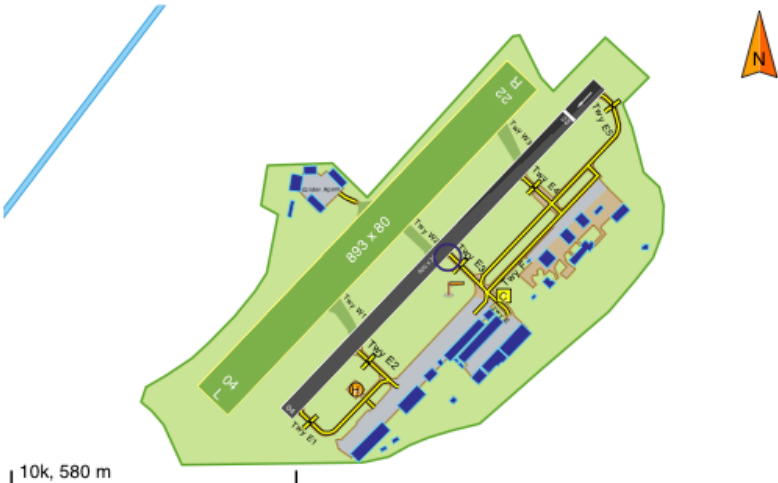


Team 2: LFLG-LIMA with F-PSCZ

Grenoble Le Versoud Airfield LFLG

5.1 nm E Grenoble
 N451305 E0055055 (E2.4°)
 724 ft (26 hPa)

LTP 115.550 131° / 24 nm
 CBY 115.400 172° / 40 nm
 LSE 114.750 132° / 45 nm



TELEPHONE + 33 4 76 28 28 28

Frequencies		LE VERSOUD Sol	121.655
ATIS	125.230	LE VERSOUD Tour	121.000
Refer to the map for detailed circuit diagrams and/or routes.		Circuits 22	RH, 1700 MSL (Fixed-Wing)
Runway 04/22 (Asphalt)	900 m x 30 m	Runway 04L/22R (Grass)	893 m x 80 m
Circuits 04	LH, 1700 MSL (Fixed-Wing)	Circuits 04L	LH (Gliders)
		Circuits 22R	RH (Gliders)

FUEL AvGas 100LL (€2.62/ltr, 7 Mar), Jet A, AvGas UL91 (€2.07/ltr, 17 Mar), MoGas (€1.83/ltr, 17 Jul)

Saint Remy De Maurienne Airfield LFKR

6.6 nm NW Saint-Jean-de-Maurienne
 N452230 E0061640 (E2.5°)
 1,399 ft (50 hPa)

LTP 115.550 098° / 36 nm
 CBY 115.400 142° / 38 nm
 PAS 116.600 164° / 49 nm



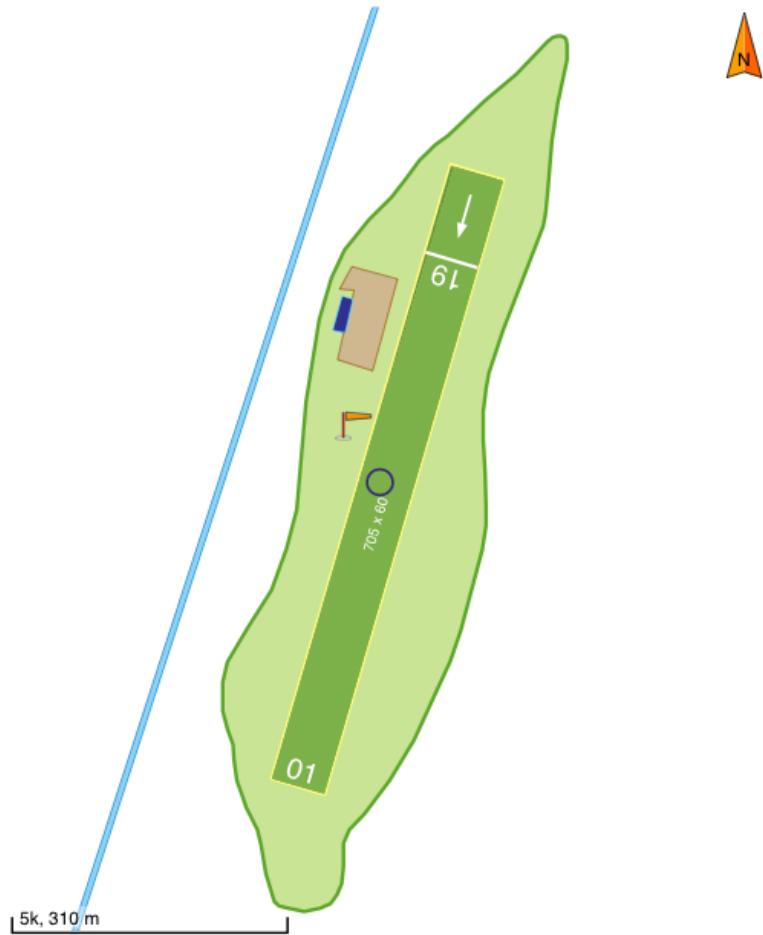
4.9k, 280 m

Team 2: LFLG-LIMA with F-PSCZ

Sollieres Sardieres Airfield LFKD

6.3 nm NE Modane
 N451514 E0064804 (E2.7°)
 4,255 ft (146 hPa)

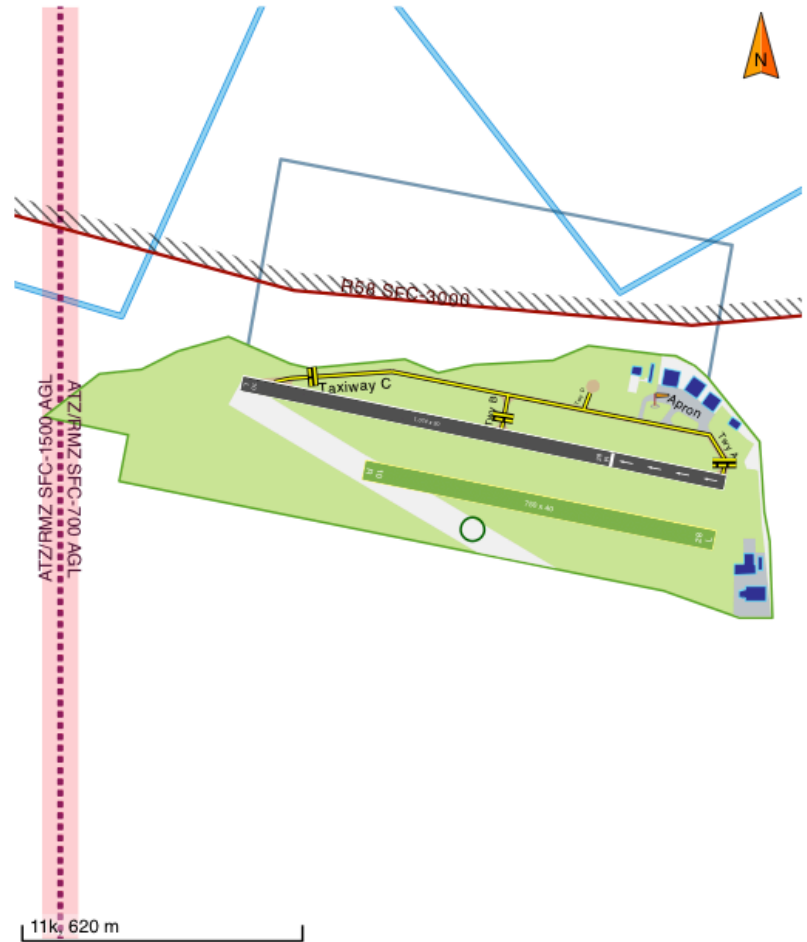
CSL 116.750 271° / 36 nm - - - - -
 SCS 109.250 215° / 37 nm
 TOP 114.500 291° / 49 nm - - - - -



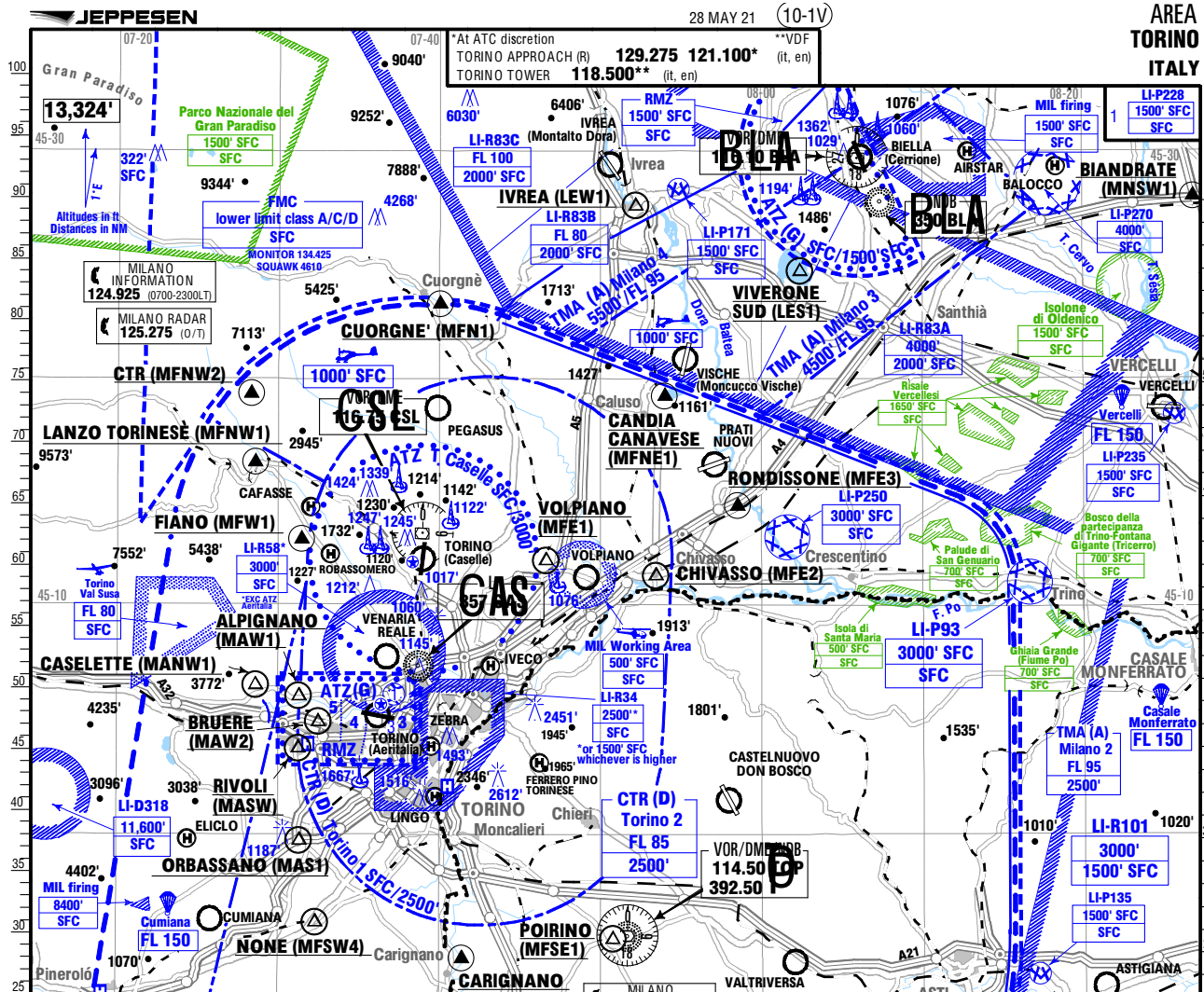
Torino/Aeritalia Airfield LIMA

3.1 nm W Torino
 N450504 E0073611 (E2.8°)
 943 ft (34 hPa)

CSL 116.750 191° / 8.4 nm - - - - -
 TOP 114.500 308° / 15 nm - - - - -
 SCS 109.250 161° / 41 nm



Team 2: LFLG-LIMA with F-PSCZ



Team 2: LFLG-LIMA with F-PSCZ

 **Torino/Aeritalia Airfield** LIMA

TELEPHONE + 39 011 7790916, EMAIL info@aeroclubtorino.it

Frequencies

Aeritalia aerodrome Information **119.800**

Refer to the map for detailed circuit diagrams and/or routes.

Circuits 10L RH (Fixed-Wing)

Runway 10L/28R
(Asphalt) 1,074 m x 30 m


Circuits 28R LH (Fixed-Wing)

Runway 10R/28L
(Grass) 750 m x 40 m

FUEL AvGas 100LL (€2.65/ltr, 12 Jan)

MCT STARTS 05:07 Z SUNRISE 05:36 Z SUNSET 17:39 Z ECT ENDS 18:08 Z

Team 2: LFLG-LIMA with F-PSCZ

 F-PSCZ Grenoble Le Versoud - Torino/Aeritalia Weather

METAR for Grenoble Alpes Isere (LFLS)

10:30 Z (27 min ago)

METAR LFLS 181030Z AUTO
29006KT 6000 BKN009 OVC018 08/06
Q1029 BECMG BKN020

TAF for Grenoble Alpes Isere (LFLS)

18 Mar 2022 10:00 Z - 19 Mar 2022
09:00 Z
Updated 48 min ago

TAF AMD LFLS 181009Z 1810/1909
33008KT 6000 OVC010 BECMG
1812/1815 BKN020 BECMG
1815/1818 VRB03KT NSC TEMPO
1818/1903 BKN040 TEMPO
1903/1908 3000 BR BKN006

METAR for Chambéry Aix Les Bains (LFLB)

10:30 Z (27 min ago)

METAR LFLB 181030Z AUTO
35012KT 9000 BKN028 OVC037 11/06
Q1029 NOSIG

TAF for Chambéry Aix Les Bains (LFLB)

18 Mar 2022 09:00 Z - 19 Mar 2022
09:00 Z
Updated 2 hr 57 m ago

TAF LFLB 180800Z 1809/1909
35012KT 7000 OVC027 BECMG
1809/1811 9999 PROB40 TEMPO
1820/1909 NSC PROB30 TEMPO
1905/1909 4000 BR SCT015

METAR for Torino/Caselle (LIMF)

10:30 Z (27 min ago)

METAR LIMF 181020Z 09005KT
060V120 5000 BR BKN060 13/08
Q1032

TAF for Torino/Caselle (LIMF)

18 Mar 2022 06:00 Z - 19 Mar 2022
06:00 Z
Updated 5 hr 57 m ago

TAF LIMF 180500Z 1806/1906
VRB05KT 6000 BKN040 BECMG
1808/1810 04010KT BECMG
1816/1818 VRB04KT

METAR for Torino/Aeritalia (LIMA)

09:50 Z (1 hr 7 m ago)

METAR LIMA 180950Z VRB03KT 5000
BR NSC 13/08 Q1032

 F-PSCZ Grenoble Le Versoud - Torino/Aeritalia NOTAM Brief

FIR Prohibited

25 Feb 2022 11:59 Z - 25 May 2022 23:59 Z (EST)
Area: 999nm from N433900 E0113900, SFC+

Entry, exit and overflight of Italian airspace is prohibited for all commercial aircraft operators registered in the republic of Belarus including as a marketing carrier in code sharing or blockspace arrangements, except for aircraft in emergency, SAR and flights for humanitarian purposes, according to council regulation of european union 907/2021 of 4TH of June 2021. REF AIP GEN 1.2-1

LIMN TACAN U/S

07 Mar 2022 08:30 Z - 29 Apr 2022 10:00 Z (EST)
Area: 25nm from N451200 E0073900, SFC+

Caselle TACAN 'CAS' CH 32X unserviceable REF milAIP AD 2 LIMN 1-10

LIMF TACAN U/S

07 Mar 2022 09:00 Z - 29 Apr 2022 10:00 Z (EST)
Area: 25nm from N451200 E0073900, SFC+

Caselle TACAN 'CAS' CH 32X unserviceable REF AIP AD 2 LIMF 1-8

VOLMET Broadcast U/S

10 Mar 2022 00:00 Z - 09 Jun 2022 23:59 Z
Area: 455nm from N441200 E0004200, SFC+

All VOLMET services and frequencies over metropolitan France not available: see AIC France a 06/22.

A/G Facility Freq Change

11 Mar 2022 13:00 Z - Permanent
Area: 999nm from N444400 E0104400, SFC+

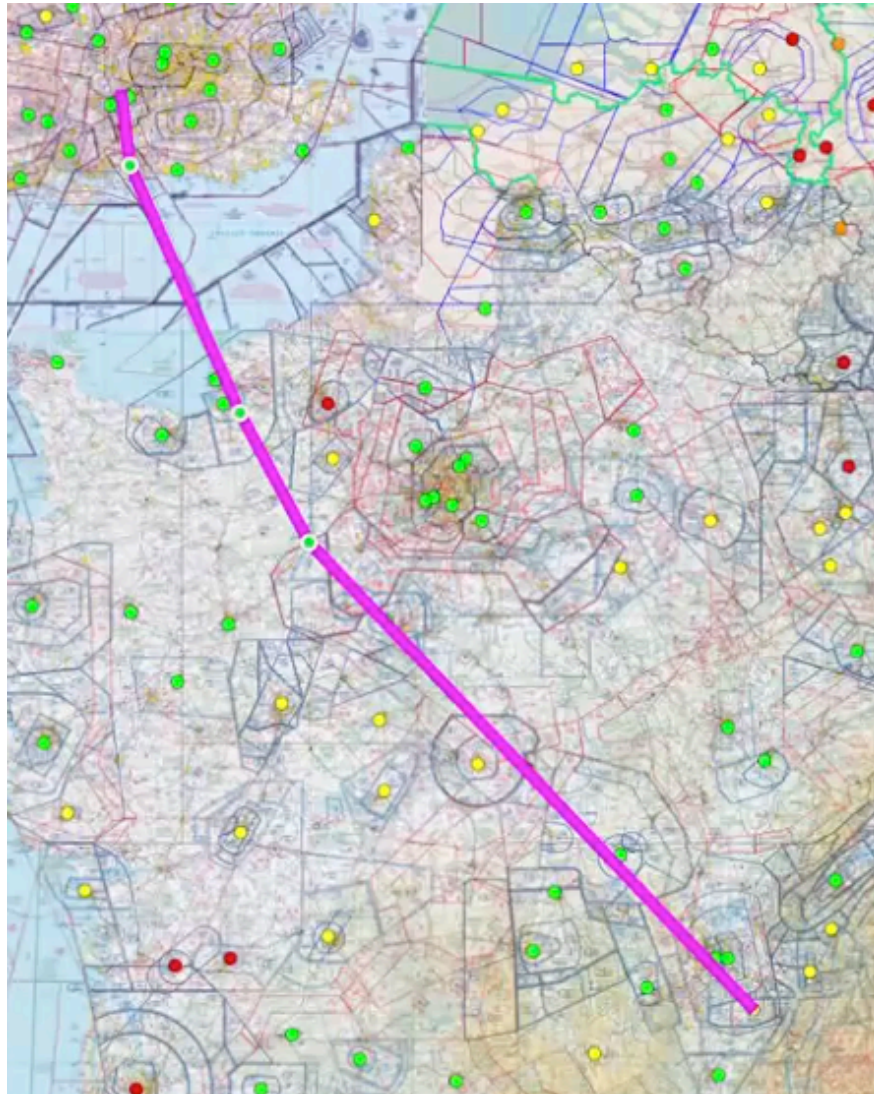
REF milAIP ENR 2.1.1.1-5 'Padova scam frequencies and sectors'
CHG frequency 258.500MHZ to read:
277.750MHZ

Landing: Torino/Aeritalia

Obstacle Erected

04 Nov 2021 00:00 Z - 03 Dec 2021 23:59 Z (EST)
Area: 5nm from N450500 E0073600, SFC+

Team 3: EGLK to LFLS with F-GGSL



Team 3: EGLK to LFLS with F-GGSL

ission from ATSU.

text to 100LL fuel pumps.

F. Pilots must be aware of
ent room in case of brake
one-way from West to East.

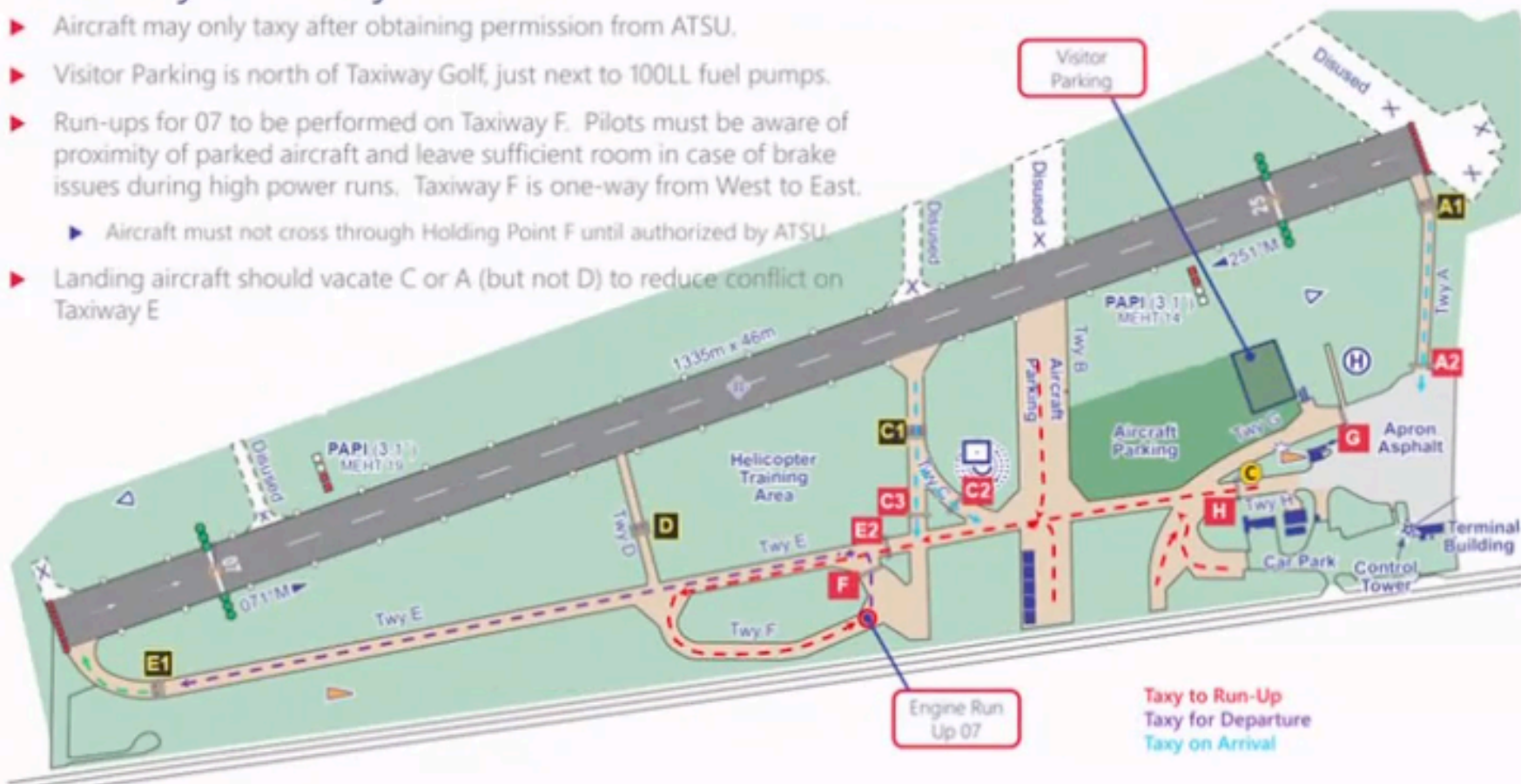
t F until authorized by ATSU.

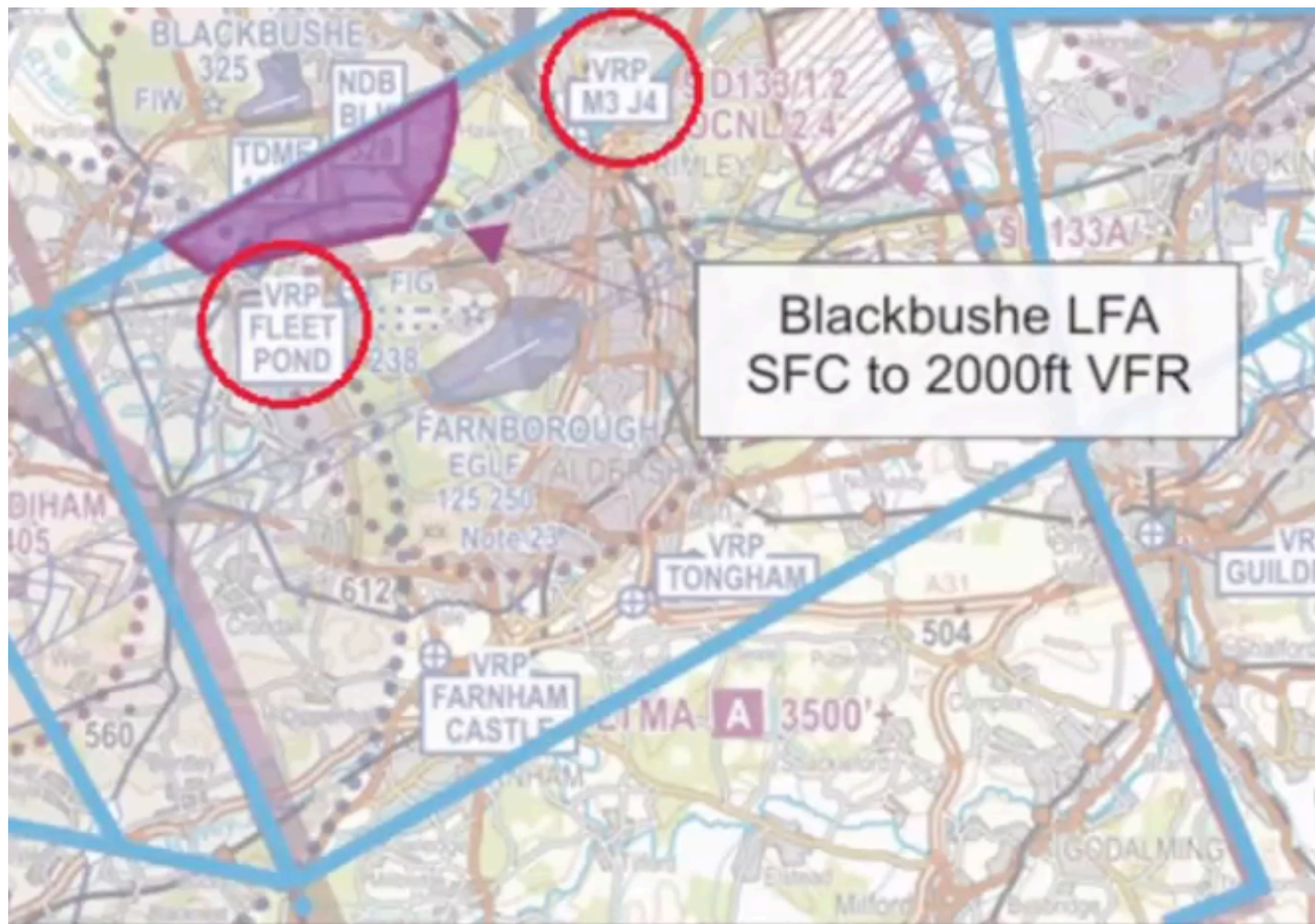
ot D) to reduce conflict on



Runway 07 Taxy Routes

- ▶ Aircraft may only taxi after obtaining permission from ATSU.
- ▶ Visitor Parking is north of Taxiway Golf, just next to 100LL fuel pumps.
- ▶ Run-ups for 07 to be performed on Taxiway F. Pilots must be aware of proximity of parked aircraft and leave sufficient room in case of brake issues during high power runs. Taxiway F is one-way from West to East.
 - ▶ Aircraft must not cross through Holding Point F until authorized by ATSU
- ▶ Landing aircraft should vacate C or A (but not D) to reduce conflict on Taxiway E





Blackbushe LFA
SFC to 2000ft VFR

GARs must be submitted to the National Crime Unit (NCU) via the following email address:

ncu@hmrc.gsi.gov.uk

Or, using the online service:

<https://www.submit-general-aviation-report.service.gov.uk/>

Or, services such as SkyDemon or Rocketroute offer this within their subscriptions.

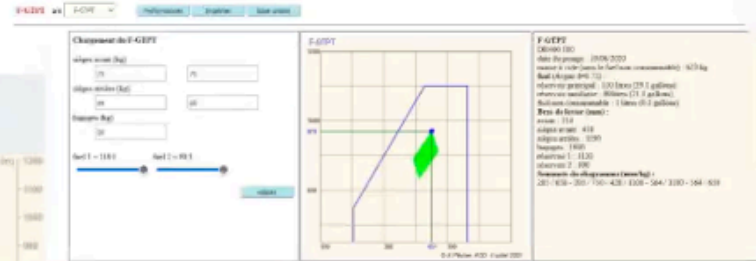
In all cases, Blackbushe Airport must also be provided with a copy of the GAR.

The requirements for reporting vary depending upon the route being flown:

Destination	Departures (GAR Notice Required)	Arrivals (GAR Notice Required)
Non-EU	24 Hours prior to Departure	24 Hours prior to Arrival
EU (except ROI)	Not required	4 Hours prior to Arrival
Republic of Ireland (ROI); Northern Ireland (NI); Isle of Man (IOM); Channel Islands (CI)	12 Hours prior to Departure	12 Hours prior to Arrival

Team 3: EGLK to LFLS with F-GGSL

1) Aircraft: Type, Call Sign, Performance. DR400, F-GTPT, Performance



Aosta



Locarno

Cruise performances, 38l/h@7500ft

ALTITUDE	REGIME		CONSOMMATION		VITESSE PROPRE		AUTO-NOME	DISTANCE	
	Zp (ft)	rpm	l/h	us gal/h	km/h	kt		h.min	km
0	75	2500	38	10.2	237	128	4.55	1178	636
	65	2350	33	8.8	220	119	5.40	1248	674
2500	75	2800	38	10.2	243	131	4.55	1208	652
	65	2400	33	8.8	225	121	5.40	1288	690
4500	75	2900	38	10.2	249	134	4.55	1233	660
	65	2450	33	8.8	230	124	5.40	1317	711
6500	75	2800	38	10.2	254	137	4.55	1263	682
	65	2500	33	8.8	235	127	5.40	1345	727
8000	75	2700	38	10.2	257	136	4.55	1278	690
	65	2500	33	8.8	240	130	5.40	1375	742
10 500	65	2500	33	8.8	240	130	5.40	1402	757

Team 4: LIMW to LSZL with F-GTPT

- 1) Aircraft: Type, Call Sign, Performance.**
- 2) Flight Plan: Departure, Destination, Airspace, Alternates, Route, Fuel**
- 3) Weather: Information: Sources, Example: Current Conditions, Forecast, conditions**
- 4) NOTAMS: Source, Airfields, Airspace.**

Team 4: LIMW to LSZL with F-GTPT

1) Aircraft: Type, Call Sign, Performance. DR400, F-GTPT, Performance

F-GTPT ac F-GTPT Performances Imprimer base avions

Chargement de F-GTPT

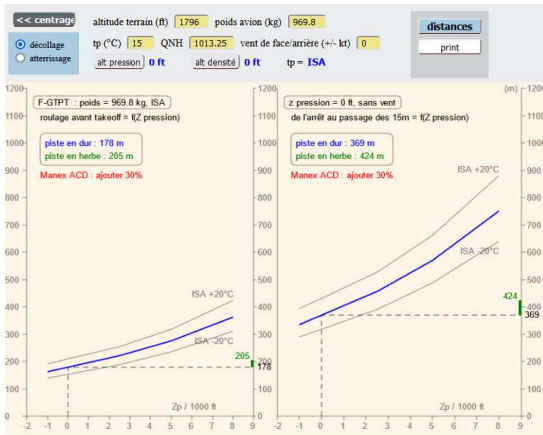
sièges avant (kg): 75
sièges arrière (kg): 28
bagages (kg): 28
fuel 1 = 110 L fuel 2 = 80 L

F-GTPT

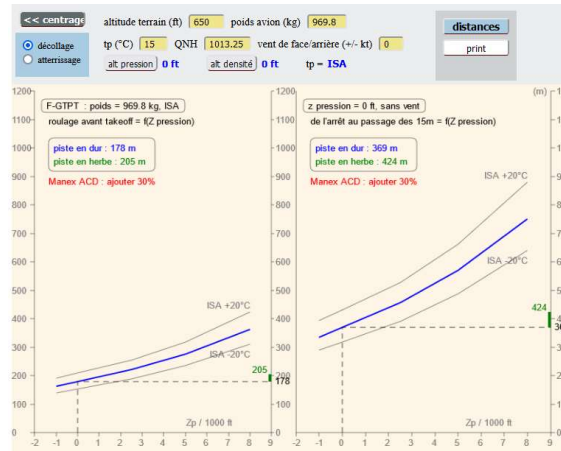
F-GTPT DR400 180
date du pesage : 19/06/2020
masse à vide (sans le fuel non consommable) : 623 kg
fuel (Avgaz d=0.72)
réservoir principal : 110 litres (29.1 gallons)
réservoir auxiliaire : 80 litres (21.1 gallons)
fuel non consommable : 1 litres (0.3 gallons)
Braz de levier (mm) :
avion : 314
sièges avant : 410
sièges arrière : 1190
bagages : 1900
réservoir 1 : 1120
réservoir 2 : 100
Somme des diagrammes (mm/kg) :
205 / 600 - 205 / 750 - 428 / 1100 - 564 / 1100 - 564 / 600

Cruise performances, 38l/h@7500ft

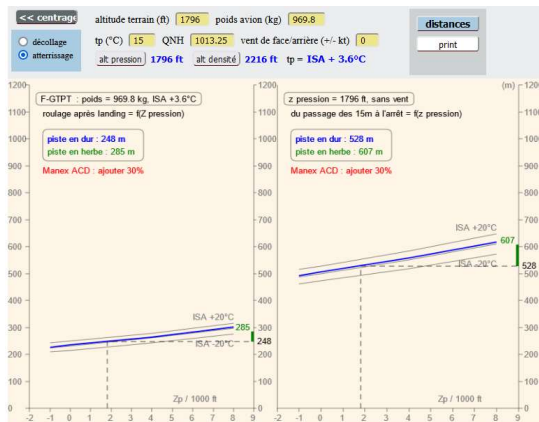
ALTITUDE Zp (ft)	REGIME		CONSOMMATION		VITESSE PROPRE		AUTO-NOMIE h.min	DISTANCE	
	%	rpm	l/h	us gal/h	km/h	kt		km	Nm
0	75	2500	38	10.2	237	128	4.55	1178	636
	65	2350	33	8.8	220	119	5.40	1248	674
2500	75	2550	38	10.2	243	131	4.55	1208	652
	65	2400	33	8.8	225	121	5.40	1288	695
4500	75	2600	38	10.2	248	134	4.55	1233	666
	65	2450	33	8.8	220	124	5.40	1317	711
6500	75	2650	38	10.2	254	137	4.55	1263	682
	65	2500	33	8.8	235	127	5.40	1345	727
8500	75	2700	38	10.2	257	130	4.55	1278	690
	65	2550	33	8.8	240	130	5.40	1375	742
10 500	65	2580	33	8.8	245	132	5.40	1402	757



Aosta



Locarno



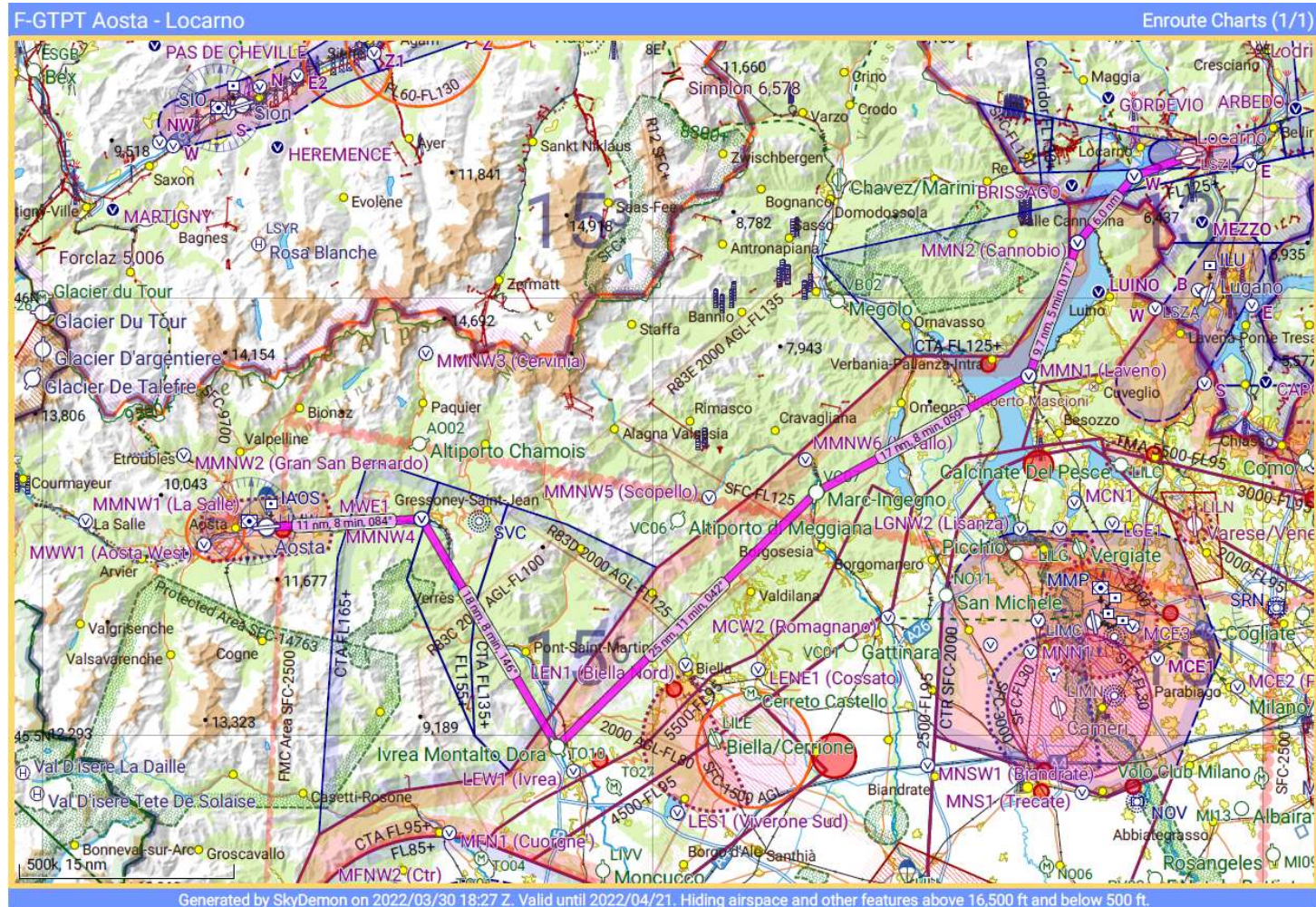
Team 4: LIMW to LSZL with F-GTPT

2) Flight Plan: Departure, Destination, Airspace, Alternates, Route, Fuel

Departure from Aosta, Destination Locarno, Week end, Airspace E, D, flight plan border crossing Italy to Switzerland

Fuel: Avgas 100LL

Cruise performances
381/h@7500ft



ICAO - VISUAL APPROACH CHART

AD 2 LIMW 5-1

SCALE 1:250,000

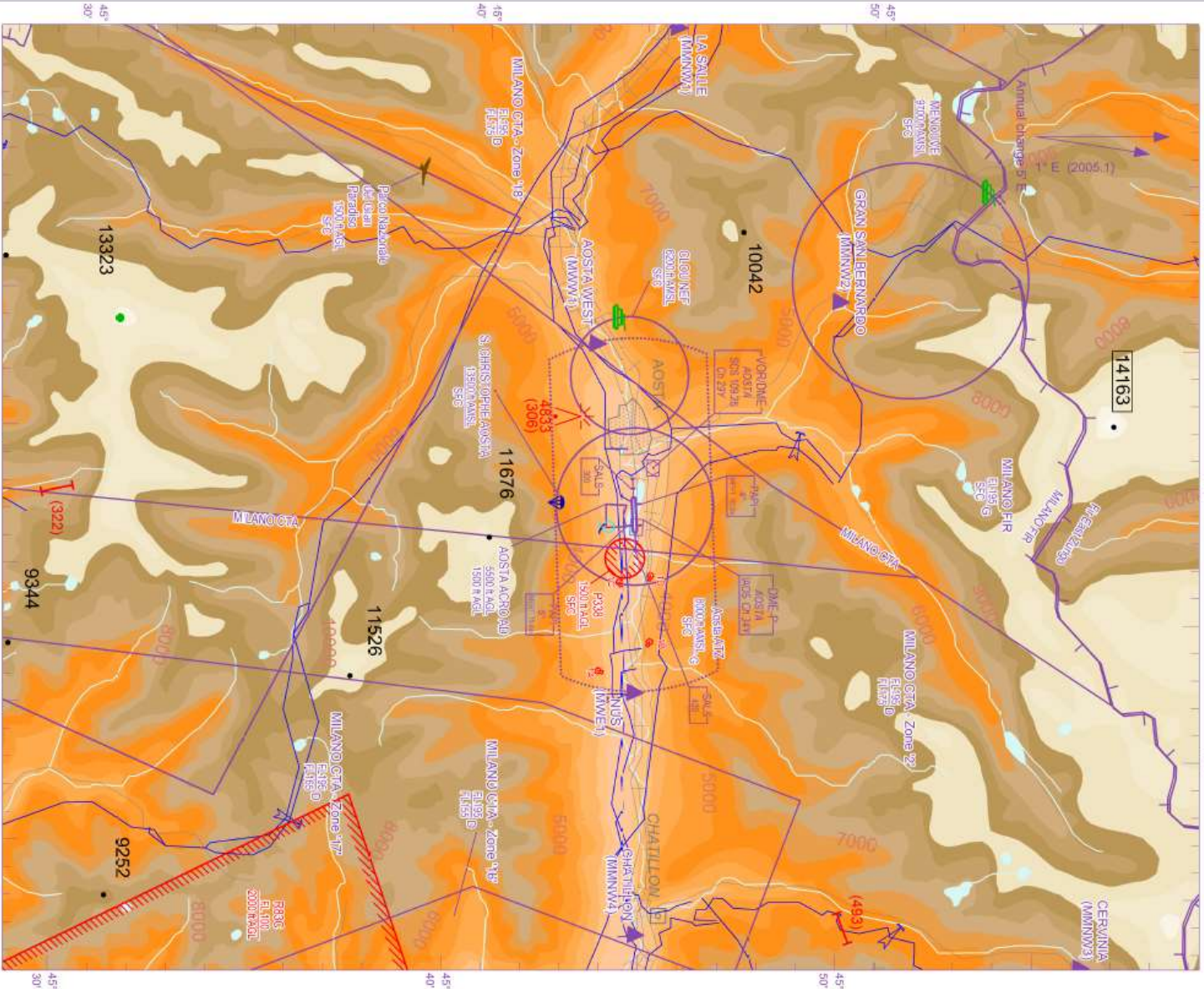


FRS Milano Inostrano
 ACS Milano Rastar
 AFIS Aosta Ambroscio (MFC) CH 119 955 119 950

AD ELEV
 L
 I
 M
 W

1796

AOSTA



CHANGE: GEO ATS UPDATED

AIRSPACE CLASSIFICATION See AIP ENR 1.4

REMARK

WARNING

TRANSITION ALT 15000 FT

ELEV AND ALT IN FT

IF NOT OTHERWISE INDICATED

ENAV - Roma

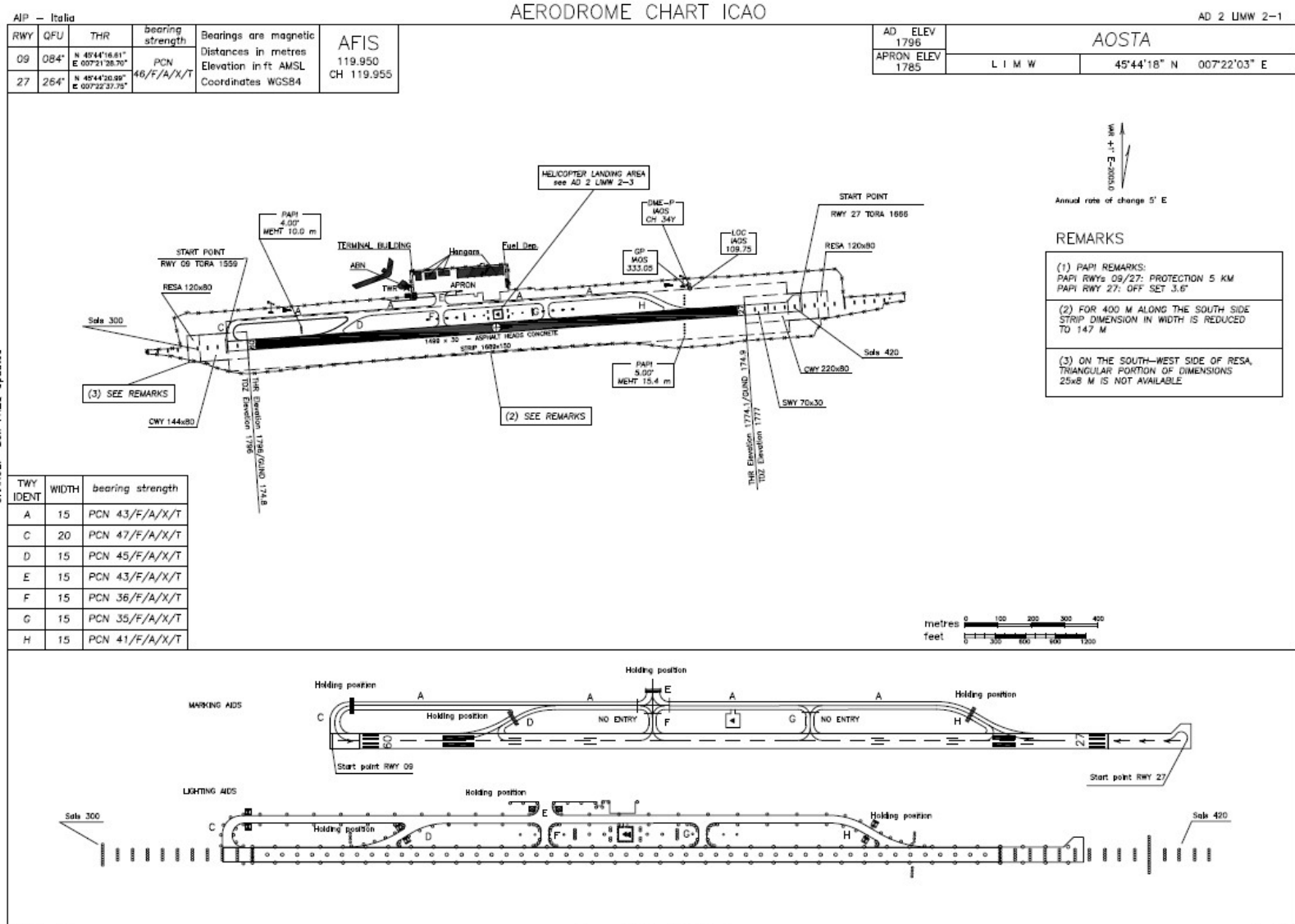
(1) LIGHTED GATES
 GATE 1A (SIL. Metal Ramp): 45°43'33"N 007°27'41"E
 GATE 1B (Quart Volant): 45°44'49"N 007°26'34"E
 GATE 1C (Bussopese): 45°43'58"N 007°24'27"E
 GATE 1D (Quart Antenna): 45°44'45"N 007°24'10"E

Data provided by AVDA S.p.A.
 Obstructions information updated to

AIRAC effective date 15 AUG 2019 (A07/19)

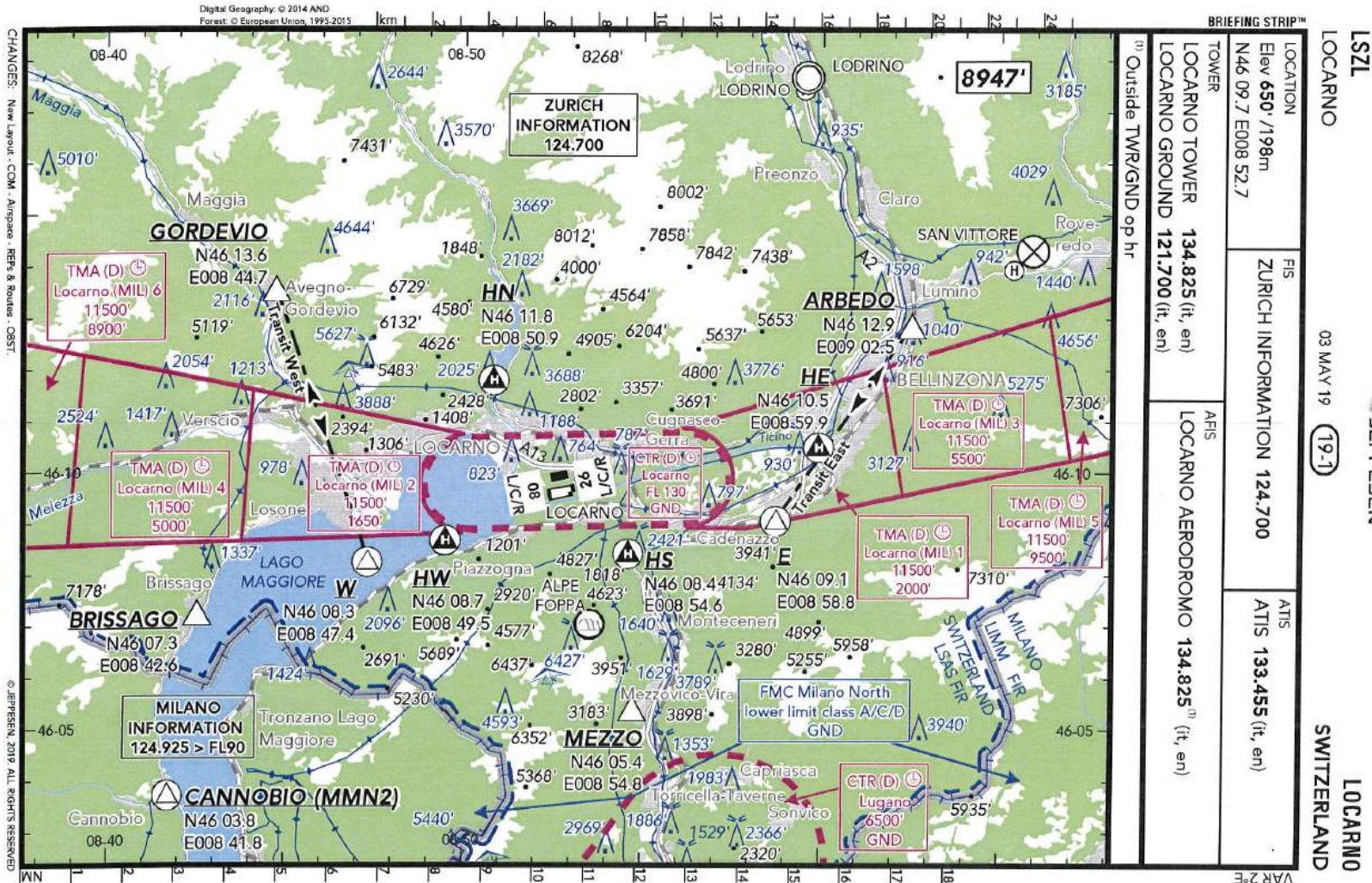
2) Flight Plan: Departure, Destination, Airspace, Alternates, Route, Fuel

Aosta



CHANGE: Box FREQ updated

2) Flight Plan: Departure, Destination, Airspace, Alternates, Route, Fuel



erland

LSZL

LOCARNO

03 MAY 19

19-1A

LOCARNO SWITZERLAND

JEPPESSEN

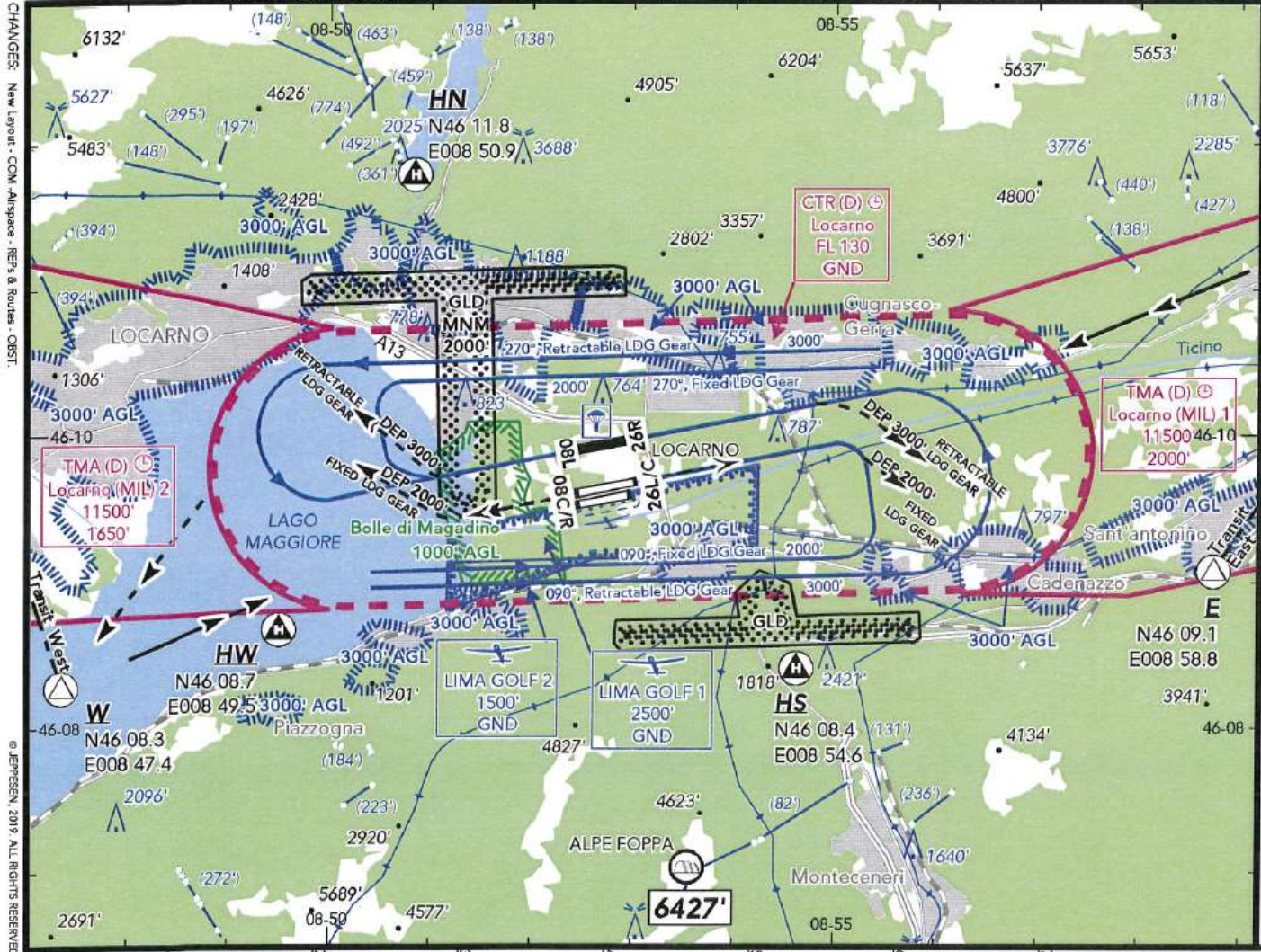
BRIEFING STRIP™

LOCATION Elev 650' /198m N46 09.7 E008 52.7	FIS ZURICH INFORMATION 124.700	ATIS LOCARNO AERODROMO 134.825 (it, en)
TOWER LOCARNO TOWER 134.825 (it, en) LOCARNO GROUND 121.700 (it, en)		ATIS ATIS 133.455 (it, en)
Outside TWR/GND op hr		

VAR 2-E

2) Flight Plan: Departure, Destination, Airspace, Alternates, Route, Fuel

Digital Geography © 2014 AND
Forest © European Union, 1995-2015



CHANGES: New Layout - COM - Airspace - REPs & Routes - OSTS

© JEPPESSEN 2019 ALL RIGHTS RESERVED

2) Flight Plan: Departure, Destination, Airspace, Alternates, Route, Fuel

F-GTPT Aosta - Locarno			PLOG
AIRCRAFT: F-GTPT (DR40)	Startup	Brakes Off	
PILOT: Jonathan Girard	Takeoff	Landing	
FUEL REQUIRED 42.0 ltr PLANNED FUEL 160.0 ltr ENDURANCE: 4 hr 9 m	Brakes On	Shutdown	
TIME: 02 Apr 2022 14:00 Z			
LANDING AT: 02 Apr 2022 14:44 Z			

Elevation 1,796 ft (64 hPa) SR 05:09 Z, MCT 04:38 Z	RNav	MSA	Level	TAS	TrkT	TrkM	Wind	HdgM	GS	Dist	Time
LIMW Aosta MMNW4 (Chatillon)	SCS 086/12	9200	7500	138	087	084	000/00	084	81	11	8
MMNW4 (Chatillon) TO10 Ivrea Montalto Dora	CSL 024/18	9300	7500	138	149	146	000/00	146	138	18	8
TO10 Ivrea Montalto Dora VC07 Marc-Ingegno	MMP 290/21	7800	7500	138	045	043	000/00	043	138	25	11
VC07 Marc-Ingegno MMN1 (Laveno)	MMP 340/17	5900	7500	138	061	058	000/00	058	136	17	7
MMN1 (Laveno) MMN2 (Cannobio)	MMP 353/25	5700	7500	138	020	017	000/00	017	129	9.7	5
MMN2 (Cannobio) BRISSAGO (LSZL)	MMP 353/29	8200	15500	138	354	351	000/00	351	126	3.9	2
BRISSAGO (LSZL) W (LSZL)	MMP 001/30	6300	15500	138	082	079	000/00	079	124	4.3	2
W (LSZL) LSZL Locarno	SRN 346/32	6700	15500	138	070	067	000/00	067	122	4.0	2

Elevation 650 ft (24 hPa) SS 17:54 Z, ECT 18:24 Z					92	44
LIMW Aosta	Monitor	134.425	Milano North FMC Area	Flight Information Service		
Aosta Aerodrome Information	Squawk	4610	Monitor	Zurich Information	124.700	
Flight Information Service	TO10 Ivrea Montalto Dora		Squawk	4612		
Milano Information	Montalto Dora Radio	118.450	VC07 Marc-Ingegno	Locarno Tower	134.825	
Milano North West FMC Area	LILE Biella/Cerrione		Varallo Radio	130.000	Locarno Ground	121.700
	Biella Aerodrome Information	123.050	LSZA Lugano		ATIS	133.455
			ATIS	121.175		

<input type="checkbox"/> IAOS (Aosta) --- --- 109.750	<input checked="" type="checkbox"/> CSL (Caselle) --- --- 116.750	<input checked="" type="checkbox"/> MMP (Malpensa) --- --- 113.350
<input checked="" type="checkbox"/> SCS (Aosta) --- --- 109.250	<input checked="" type="checkbox"/> SRN (Saronno) --- --- 113.700	

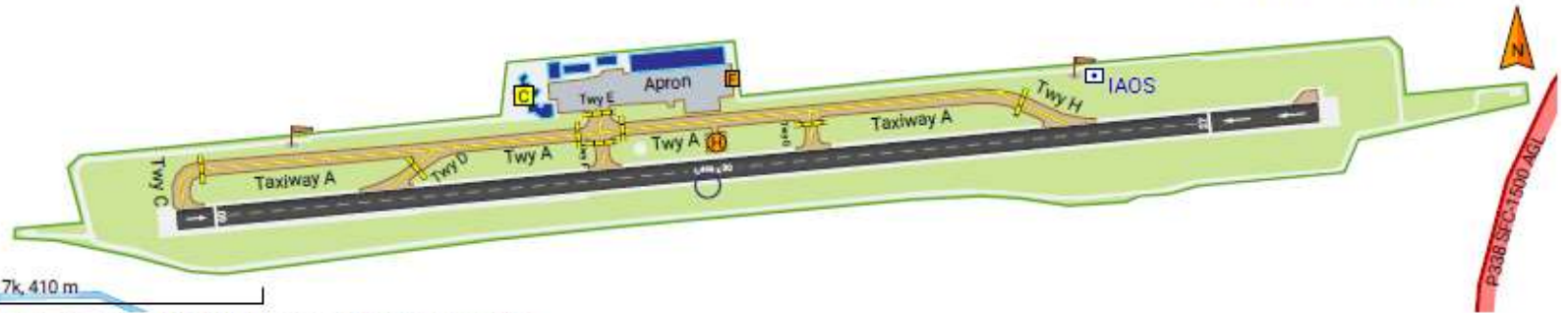
Team 4: LIMW to LSZL with F-GTPT

Aosta Airfield

LIMW

2.1 nm E Aosta
 N454418 E0072203 (E2.8°)
 1,796 ft (64 hPa)

SCS 109.250 107° / 1.3 nm
 SIO 112.150 171° / 29 nm
 CSL 116.750 336° / 33 nm



TELEPHONE + 39 0165 303318, EMAIL info@avda-aosta.it

Radio Navigation Aids	SCS	IAOS
Frequencies Aosta Aerodrome Information 119.955	<input checked="" type="checkbox"/> SCS 109.250	<input type="checkbox"/> IAOS 109.750
Runway 09/27 (Asphalt) 1,499 m x 30 m	Circuits 09 LH (Fixed-Wing) Circuits 27 LH (Fixed-Wing)	

FUEL AvGas 100LL (€2.04/ltr, 27 Mar), Jet A
 MCT STARTS 04:44 Z SUNRISE 05:14 Z SUNSET 17:56 Z ECT ENDS 18:26 Z

Team 4: LIMW to LSZL with F-GTPT

F-GTPT Aosta - Locarno

Weather

METAR for Sion (LSGS)

18:20 Z (15 min ago)

METAR LSGS 301820Z AUTO 28003KT
250V320 9999 BKN100 11/05 Q0999

METAR for Aosta (LIMW)

17:20 Z (1 hr 15 m ago)

METAR LIMW 301720Z AUTO 10014KT
9999 SCT045/// BKN110/// 09/04
Q1000

METAR for Torino/Aeritalia (LIMA)

16:50 Z (1 hr 45 m ago)

METAR LIMA 301650Z 01003KT
300V070 4000 -RA BR BKN005 10/08
Q1001

METAR for Torino/Caselle (LIMF)

18:20 Z (15 min ago)

METAR LIMF 301820Z 36003KT 9999
-DZ SCT020 BKN060 09/08 Q1001
REDZ

TAF for Torino/Caselle (LIMF)

30 Mar 2022 18:00 Z - 31 Mar 2022
18:00 Z

Updated 1 hr 35 m ago

TAF LIMF 301700Z 3018/3118
VRB05KT 7000 BKN012 TEMPO
3018/3020 RA BECMG 3101/3103
SCT035 TEMPO 3103/3106 2000
BCFG

METAR for Cameri (LIMN)

17:55 Z (40 min ago)

METAR LIMN 301755Z ///KT 3000
-RA BR SCT020 BKN050 10/08 Q1001
RMK OVC VIS MIN 3000 YLO

TAF for Cameri (LIMN)

30 Mar 2022 18:00 Z - 31 Mar 2022
03:00 Z

Updated 1 hr 35 m ago

TAF LIMN 301700Z 3018/3103
02007KT 3000 RA BR SCT015 BKN030

METAR for Milano/Malpensa (LIMC)

18:20 Z (15 min ago)

METAR LIMC 301820Z 01006KT 4000
-RA BR SCT020 BKN040 10/09 Q1001
NOSIG

TAF for Milano/Malpensa (LIMC)

30 Mar 2022 18:00 Z - 01 Apr 2022
00:00 Z

Updated 1 hr 35 m ago

TAF LIMC 301700Z 3018/3124
VRB05KT 6000 SCT020 SCT035
TEMPO 3018/3022 3000 RA TEMPO
3101/3107 2000 BCFG

METAR for Lugano (LSZA)

18:20 Z (15 min ago)

METAR LSZA 301820Z AUTO 18001KT
3500 DZ BR BKN009 BKN012 BKN038
09/08 Q1001

METAR for Locarno (LSZL)

18:20 Z (15 min ago)

METAR LSZL 301820Z AUTO 00000KT
9999NDV SCT051 09/08 Q1001 RMK

TAF for Locarno (LSZL)

30 Mar 2022 18:00 Z - 31 Mar 2022
03:00 Z

Updated 1 hr 10 m ago

TAF LSZL 301725Z 3018/3103
VRB02KT 9999 -DZ FEW035 BKN055
PROB30 TEMPO 3018/3021 RA

Team 4: LIMW to LSZL with F-GTPT

F-GTPT Aosta - Locarno

NOTAM Brief

Takeoff: Aosta

Obstacle Erected

19 Jan 2022 08:27 Z - 17 Apr 2022 20:00 Z
Area: 5nm from N454400 E0072200, SFC+
New obstacle erected mobile crane penetrating transitional surface position coordinates (WGS-84): 454420.4N 0072006.1E
max elevation AGL 41M/134FT
Max elevation AMSL 617M/2024FT
ICAO signal not provided
REF AIP AD 2 LIMW 3-1

Obstacle Erected

25 Jan 2022 07:24 Z - 24 Apr 2022 18:00 Z (EST)
Area: 5nm from N454400 E0072200, SFC+
New obstacle erected mobile crane penetrating transitional surface,
1350M from threshold RWY27
Position coordinates (WGS-84): 454451.1N 0072321.5E
max elevation AGL 35.0M/114.8FT
Max elevation AMSL 631.0M/2070.2FT
RMK: ICAO signal provided
REF AIP AD 2 LIMW 3-1

NDB U/S

26 Jan 2022 08:55 Z - 20 Apr 2022 23:59 Z
Area: 5nm from N454400 E0072200, SFC+
Torino NDB 'TOP' frequency 392.50KHZ
unserviceable REF AIP AD 2 LIMW 1-8

Taxiway Closed

10 Mar 2022 09:36 Z - 07 Jun 2022 23:00 Z (EST)
Area: 5nm from N454400 E0072200, SFC+
Taxiway 'A' between taxiway 'C' and taxiway 'D' closed due to WIP except for glider taxiing. Presence men and equipment in radio contact with local aerodrome flight information unit (AFIU)
REF AIP AD 2 LIMW 2-1

NDB U/S

18 Mar 2022 12:08 Z - 15 Jun 2022 18:00 Z (EST)
Area: 5nm from N454400 E0072200, SFC+
Comagne NDB 'SVC' frequency 418.00KHZ
unserviceable REF AIP AD 2 LIMW 1-8

VOR/DME U/S

18 Mar 2022 12:10 Z - 15 Jun 2022 18:00 Z (EST)
Area: 5nm from N454400 E0072200, SFC+
Aosta VOR/DME 'SCS' frequency 109.25MHZ CH 29Y
unserviceable REF AIP AD 2 LIMW 1-8

NDB U/S

21 Mar 2022 16:27 Z - 13 Jun 2022 23:59 Z
Area: 5nm from N454400 E0072200, SFC+
Saronno NDB 'SRN' frequency 330.00KHZ
unserviceable. REF AIP AD 2 LIMW 1-8

Warnings

Free Balloon Scheduled

27 Mar 2022 09:00 Z - 28 May 2022 13:00 Z (MON-SAT 0900-1300)
Area: 32nm from N451400 E0075500, SFC+

Ascent of light free balloons for radiosounding will take place within following area:
453451N0074714E-453545N0082433E-445125N008 2410E-445608N0072503E
-452626N0073139E-453503N0074723E-453451N007 4714E
Point saint martin SE Aosta/

LSZA Unmanned Aircraft Scheduled

28 Mar 2022 06:00 Z - 26 Aug 2022 15:30 Z
Area: 1nm from N460100 E0085700, SFC-1550
March 28-April 01 0600-1530, April 04-08 11-15 18-22 25-29 0600-1530,
May 02-06 09-13 16-20 23-27 30-June 03 0600-1530, June 06-10 13-17 20-24 27-July 01 0600-1530, July 04-08 11-15 18-22 25-29 0600-1530, August 01-05 08-12 15-19 22-26 0600-1530
Unmanned aircraft will take place over Lugano city along TR 460102.09N0085709.64E 460055.24N0085708.51E 460048.51N0085709.74E 460041.39N0085712.76E 460038.15N0085717.11E 460035.96N0085732.07E 460035.80N0085740.12E, centered on 460049.11N0085718.39E between eoc ospedale regionale di Lugano-italiano and eoc ospedale regionale di Lugano-civico (both directions) at and below 140M/460FT AGL. For information contact TEL +41 76 457 35 11.

Military Operating Area Activated

29 Mar 2022 06:00 Z - 27 Apr 2022 16:00 Z (TUE WED 0600-1600)
Area: 4nm from N452900 E0081000, SFC-1500 AGL
Military firing area /Candelo Masazza-NW Vercelli/ activated REF AIP ENR 5.2.1.1-1

Team 4: LIMW to LSZL with F-GTPT

F-GTPT Aosta - Locarno

NOTAM Brief

Enroute

Obstacle Lighting U/S

10 Jan 2022 11:37 Z - 08 Apr 2022 23:59 Z (EST)
Area: 1nm from N454400 E0084900, SFC+

Obstacle lighting out of service on lattice tower site / caronno varesino-SW Varese/

Position coordinates (WGS84) 454405N 0084903E
Height 22M/73FT AGL, elevation 379M/1.244FT AMSL

A/G Facility U/S

19 Jan 2022 07:57 Z - 15 Apr 2022 23:59 Z (EST)
Area: 137nm from N451100 E0121100, SFC+

Padova sccam (Italian air force coordination and control service)

Frequency 338.775MHZ and 123.175MHZ not available due to technical reason. REF milAIP ENR 2.1.1.1-4

A/G Facility U/S

19 Jan 2022 08:00 Z - 15 Apr 2022 23:59 Z (EST)
Area: 137nm from N451100 E0121100, SFC+

Padova sccam (Italian air force coordination and control service) frequency 123.175MHZ not available due to technical reason REF AIP ENR 2.1.1.1-14

LIMF NDB U/S

26 Jan 2022 08:47 Z - 20 Apr 2022 23:59 Z
Area: 25nm from N445500 E0075200, SFC+

Torino NDB 'TOP' frequency 392.50KHZ unserviceable REF AIP AD 2 LIMF 1-10

LIMC NDB U/S

27 Jan 2022 00:00 Z - 24 Apr 2022 23:59 Z (EST)
Area: 25nm from N452500 E0084800, SFC+
Novara NDB 'November' frequency 292.00KHZ unserviceable. REF AIP AD 2 LIMC 1-11

Obstacle Erected

12 Feb 2022 08:08 Z - 29 Oct 2022 23:59 Z (EST)
Area: 5nm from N461000 E0084800, SFC-FL08

Crane 2.1KM NE ascona, marked, LGTD, 461009N0084730E, 31.0M / 101.8FT AGL, 242.4M / 795.0FT AMSL.

FIR Prohibited

25 Feb 2022 11:59 Z - 25 May 2022 23:59 Z (EST)
Area: 999nm from N433900 E0113900, SFC+

Entry, exit and overflight of Italian airspace is prohibited for all commercial aircraft operators registered in the republic of Belarus including as a marketing carrier in code sharing or blockspace arrangements, except for aircraft in emergency, SAR and flights for humanitarian purposes, according to council regulation of european union 907/2021 of 4TH of June 2021. REF AIP GEN 1.2-1

LIMN TACAN U/S

07 Mar 2022 08:30 Z - 29 Apr 2022 10:00 Z (EST)
Area: 25nm from N451200 E0073900, SFC+
Caselle TACAN 'CAS' CH 32X unserviceable REF milAIP AD 2 LIMN 1-10

LIMF TACAN U/S

07 Mar 2022 09:00 Z - 29 Apr 2022 10:00 Z (EST)
Area: 25nm from N451200 E0073900, SFC+
Caselle TACAN 'CAS' CH 32X unserviceable REF AIP AD 2 LIMF 1-8

A/G Facility Freq Change

11 Mar 2022 13:00 Z - Permanent
Area: 999nm from N444400 E0104400, SFC+
REF milAIP ENR 2.1.1.1-5 'Padova sccam frequencies and sectors'
CHG frequency 258.500MHZ to read: 277.750MHZ

Obstacle Lighting U/S

11 Mar 2022 15:01 Z - 11 Jun 2022 23:59 Z (EST)
Area: 1nm from N455400 E0083000, SFC-FL09

Obstacle lighting unserviceable on lattice TWR site / baveno - NW Varese/ position coordinates (WGS84)455432N 0082951E height AGL 40.0M/ 131.2FT elevation AMSL 267.0M/876.0FT

Obstacle Lighting U/S

17 Mar 2022 12:57 Z - 13 Jun 2022 12:50 Z (EST)
Area: 1nm from N452500 E0080600, SFC+

Obstacle lighting out of service on pole site /Cavaglia - NE Torino/
Position 452459N0080538E
Height AGL 30M/98FT
Elevation AMSL 303M/994FT

Team 4: LIMW to LSZL with F-GTPT

F-GTPT Aosta - Locarno

NOTAM Brief

LIMC NDB U/S

21 Mar 2022 16:26 Z - 13 Jun 2022 23:59 Z (EST)
Area: 25nm from N453900 E0090100, SFC+
Saronno NDB 'SRN' frequency 330.00KHZ
unserviceable. REF AIP AD 2 LIMC 1-11

Obstacle Lighting U/S

23 Mar 2022 07:55 Z - 21 Jun 2022 07:46 Z (EST)
Area: 5nm from N453900 E0084700, SFC-FL09
Obstacle lighting out of service on generic obstacle site/ gallarate - NW Milano/ position coordinates (WGS84) 453859N 0084647E height 29M/95FT AGL, elevation 263M/863FT AMSL

LSZA Obstacle Lighting U/S

28 Mar 2022 18:01 Z - 11 Apr 2022 15:30 Z
Area: 5nm from N460300 E0085600, SFC-FL19
Obstacle lighting U/S on pole (SAN zeno - Lugano)
460258N0085554E 13M / 43FT AGL, 575M / 1887FT AMSL.
286-ti-30068-LSZA

Landing: Locarno

LSZL TMA Limited

03 Jan 2022 07:29 Z - 07 Apr 2022 23:59 Z (EST)
Area: 11nm from N461000 E0085500, SFC-FL130
Covid-19: flight restrictions EXP IFR HEMS (HEL EMERG medical SER) MOV outside ATC operating hours. VFR flight REQ to make blind position REP on 134.825 outside Locarno ATC operating hours when within and when approaching borders of Locarno CTR and TMA SECT 1, 2 and 3 in airspace class E and G.

General Information

AIS Information

22 Sep 2021 10:54 Z - Permanent
Area: 999nm from N433900 E0113900, SFC-FL140
REF low flying chart-europe edition 18 edited by Italian air force (ciga)

On sheets 2-ita and 7-ita insert FLW areas:

-Parco Nazionale Foreste Casentinesi Monte Falterona/Campigna lateral limits :

440307N0114150E
435751N0114912E
435015N0115745E
434320N0115827E
434141N0115620E
434502N0114704E
434834N0114204E
435031N0113650E
435412N0113624E
435558N0113920E
435818N0113608E
435955N0113706E
440307N0114150E

Vertical limits:
Upper limit: 1500FT AGL

Lower limit: SFC
-Parachuting area:
Marignolle (fi) -CIV-
Lateral limits:

434447N0111248E
434722N0111309E

434720N0111636E

434444N0111614E

434447N0111248E

Vertical limits:

Upper limit: FL140

Lower limit: SFC

SFC-FL140

NOTAM

24 Sep 2021 11:42 Z - 22 Dec 2021 23:59 Z (EST)
Area: 999nm from N433900 E0113900, SFC+

Automatic terminal information service provided by enav aerodromes reports only visibility of the touchdown zone.

Visibility representative of conditions along the runway is provided to departing aircraft by ATC when different from visibility of the TDZ

REF AIP GEN 3.4-1

Entry Requirements Information

24 Jan 2022 11:38 Z - 23 Apr 2022 23:53 Z (EST)
Area: 999nm from N433900 E0113900, SFC+

Covid-19 information: To ensure safe and expeditious delivery of Covid-19 vaccines, aircraft operators of flights carrying such vaccines should ask approval from 'presidenza del consiglio dei ministri-ufficio per i voli di stato di governo ed umanitari' phone +390667793513, email: ufficiovoli@governo.it or ufficiovoli@mailbox.governo.it for exemption from ATFM measures for each flight deemed critical. Upon approval, STS/atfmx and RMK/vaccine shall be inserted in item 18 of the flight plan.

Team 5: LFLG to LSGL with F-HCEN

Aircraft

DR400 F-HCEN (JET-A1)

135 Hp

3.5seats

VFR Standard panel

No Autopilot

Nav

From LFLG (Le Versoud) to LSGL (Lausanne)
(AFIS)

Navlog > Excel

93NM @ 4500ft

Team 5: LFLG to LSGL with F-HCEN

- Charger
- Recharger
- Effacer
- Prévisualiser
- Imprimer
- Sortir

Z vol Z mini	CM RM	Dist. D10	TV	Report	mc	mn	Observations
		0		LFLG Grenoble le Versoud 724 ft(26 HPa) 121.00	0.53	0.00	
4 500	023	18	12'	LFLB/SM Echangeur Routier 927 ft(33 HPa)	0.42	0.11	
7 200		93		LFLB/BB Ouest de la Zone Industrielle de l'Abbaye 1081 ft(39 HPa)	0.39	0.14	
4 500	319	5	3'	LFLB/SE Travers Challes Ad 978 ft(35 HPa)	0.39	0.14	
5 400		76		LFLB/EY Gréssy sur Aix 1030 ft(37 HPa)	0.33	0.19	
4 500	352	1	0'	LFLP/ALBY Alby sur Chéran 1441 ft(51 HPa)	0.29	0.23	
5 600		71		LFLP/INW Lac de la Balme 1596 ft(57 HPa)	0.24	0.28	
4 500	350	10	5'	LFLP/INW Lac de la Balme 1596 ft(57 HPa)	0.24	0.28	
5 600		70		LFLP/INW Lac de la Balme 1596 ft(57 HPa)	0.24	0.28	
4 500	031	7	4'	LFLP/INW Lac de la Balme 1596 ft(57 HPa)	0.24	0.28	
5 600		81		LFLP/INW Lac de la Balme 1596 ft(57 HPa)	0.24	0.28	
4 500	001	9	5'	LFLP/INW Lac de la Balme 1596 ft(57 HPa)	0.24	0.28	
5 300		53		LFLP/INW Lac de la Balme 1596 ft(57 HPa)	0.24	0.28	
4 500	035	5	3'	LFLP/INW Lac de la Balme 1596 ft(57 HPa)	0.24	0.28	
4 900		44		LFLP/INW Lac de la Balme 1596 ft(57 HPa)	0.24	0.28	
4 500	042	9	5'	LFLP/INW Lac de la Balme 1596 ft(57 HPa)	0.24	0.28	
5 100		39		LFLP/INW Lac de la Balme 1596 ft(57 HPa)	0.24	0.28	
4 500	003	3	2'	LFLP/INW Lac de la Balme 1596 ft(57 HPa)	0.24	0.28	
4 800		30		LFLP/INW Lac de la Balme 1596 ft(57 HPa)	0.24	0.28	
4 500	047	17	9'	LFLP/INW Lac de la Balme 1596 ft(57 HPa)	0.24	0.28	
5 500		27		N462232E0063431 Chateau_Travers_Ouest_Evian 2625 ft(94 HPa)	0.05	0.47	
Immatriculation : F-HAGR							
VP:120 P:0.5 93 NM							
Lieu Pistes Vent Visi QNH Info Divers							
LFLG +04° 22' 22" Dure 1700(1000)*R 900x30m Revélu 04 22 Herbe 89x80m Herbe							
LFLI +12° +30 2600(1000)*R 1300x30m Revélu							

Form journal
Top chrono / Index Recalage gyro / Cap Altitude (MTO, zone, relief) Estimée Radio / Radio nav. Carburant (bascule, bilan) Circuit moteur / Electricité
Déroutement Position / Top Cap approximatif Recalage gyro / Cap exact Altitude (MTO, zone, relief) Estimée, affilage nav. Radio / Radio nav. Carburant (bascule, bilan) Circuit moteur / Electricité VAC terrain, FPL
Arrivée ATIS/AFIS/MTO VAC/Tactique/QFU
Distances (fb=0.5) 1/500.000e (fb*5*doigts) 1 doigt = 5 NM = 3 mn 2 doigts = 10 NM = 5 mn 3 doigts = 15 NM = 8 mn 4 doigts = 20 NM = 10 mn
Fréquences Défaut 123.50 Montagne 130.00 Détresse 121.50 Militaire 119.70
Compteur Arrivée Départ
Essence Avec vent 0.53 Routage/mt. 0.25 Sécurité 0.30 Déroutement 0.00 Total 1.48
Embarqué Restera
Heure Bloc départ Avant 16:41z civ. Décollage Avant 16:51z civ. Bloc arrivée Avant 16:05z civ.
Localisation VOR Tracer relevé "From" depuis le VOR

Z vol Z mini	CM RM	Dist. D10	TV	Report	mc	mn	Observations
		83		N462232E0063431 Chateau_Travers_Ouest_Evian 2625 ft(94 HPa)	0.05	0.47	
4 500	007	10	6'	N463245E0063656 LSGL 2059 ft(74 HPa)	0.00	0.53	
5 300		10					

Z vol Z mini	CM RM	Dist. D10	TV	Report	mc	mn	Observations
Immatriculation : F-HAGR							
VP:120 P:0.5 93 NM							
Lieu Pistes Vent Visi QNH Info Divers							

Team 5: LFLG to LSGL with F-HCEN

PERFORMANCE DE DECOLLAGE

A la masse maximale au décollage de 980 kg (2161 lb), sans vent, volets en position décollage (1er cran), pleine puissance.

Conditions :

- Vent nul, volets en position décollage (1er cran), pleine puissance avant lâcher des freins.
- Piste en dur, sèche et plane.
- Vitesse de rotation Vr..... 96 km/h (52 kt)
- Vitesse de décollage Vlof 105 km/h (57 kt)
- Vitesse au passage des 15 m (50 ft) 113 km/h (61 kt)

Altitude pression (ft)	Distance de décollage (m) à 980 kg					
	ISA		ISA +10 °C		ISA + 20 °C	
	décollage	passage des 15m	décollage	passage des 15m	décollage	passage des 15m
0	240	440	260	480	280	520
1000	260	470	270	500	290	540
2000	270	490	290	530	310	570
3000	280	510	300	550	320	590
4000	300	540	320	580	340	630
5000	310	580	330	620	360	670
6000	330	620	350	660	380	720
7000	360	690	380	730	400	790
8000	390	760	410	810	430	880
9000	410	810	430	850	450	930

Tableau 5-2 - Distance de décollage (m) à 980 kg (masse max. au décollage)

Team 5: LFLG to LSGL with F-HCEN

PERFORMANCE DE CROISIERE

A la masse maximale au décollage de 980 kg (2161 lb), en atmosphère standard.

Les calculs de distance franchissable et d'autonomie prennent en compte 45 min de réserve à l'arrivée (à une puissance de 55%).

On admet que l'excédent de consommation dû à la montée est compensé par la croisière descendante.

La distance franchissable est donnée pour un vent nul.

Réservoir standard : 109 litres utilisables.

Réservoir standard + réservoir auxiliaire : 159 litres utilisables.

Altitude pression (ft)	ISA				Standard		Std + Aux	
	%	KCAS	KTAS	l/h	109 litres		159 litres	
					Nm	heures	Nm	heures
2000	75	108	111	21,2	496	4,5	758	6,8
2000	70	104	107	19,6	516	4,8	788	7,4
2000	65	100	103	18,1	537	5,2	821	8,0
2000	60	95	98	16,7	555	5,7	848	8,7
2000	55	88	91	15,3	562	6,2	859	9,5
2000	50	79	81	13,9	554	6,8	846	10,4
4000	75	107	114	21,2	508	4,5	776	6,8
4000	70	103	109	19,6	526	4,8	804	7,4
4000	65	99	105	18,1	548	5,2	837	8,0
4000	60	94	99	16,7	564	5,7	862	8,7
4000	55	87	92	15,3	570	6,2	871	9,5
4000	50	78	82	13,9	561	6,8	857	10,4
6000	75	107	117	21,2	520	4,5	794	6,8
6000	70	102	112	19,6	537	4,8	821	7,4
6000	65	98	107	18,1	559	5,2	854	8,0
6000	60	93	101	16,7	576	5,7	880	8,7
6000	55	85	93	15,3	579	6,2	885	9,5
6000	50	76	84	13,9	569	6,8	870	10,4

Tableau 5-11 - Performance de croisière, 2000 - 6000 ft

Team 5: LFLG to LSGL with F-HCEN

PERFORMANCE D'ATTERRISSAGE

A la masse maximum au décollage de 980 kg (2161 lb),
 Par vent nul, volets en position atterrissage, moteur au ralenti.
 Piste en dur, sèche et plane.

ALTITUDE ft (m)	TEMPERATURE		MASSE 980 kg (2161 lb)			
	°C	°F	Distance d'atterrissage (toucher)		Distance d'atterrissage à partir des 15 m (50 ft)	
			m	(ft)	m	(ft)
0	- 5	23	266	873	479	1570
	Std=15	59	282	925	507	1663
	35	95	298	976	535	1755
2000 (610)	-9	16	277	909	498	1635
	11	52	294	964	528	1733
	31	88	310	1018	558	1830
3000 (914)	-11	12	284	931	510	1674
	9	48	301	987	541	1775
	29	84	318	1043	572	1875
4000 (1219)	-13	9	291	953	527	1728
	7	45	308	1011	559	1833
	27	81	326	1069	591	1937

Tableau 5-13 - Performance d'atterrissage

Influence du vent de face :

- pour 10 kt, multiplier par 0,85
- pour 20 kt, multiplier par 0,65
- pour 30 kt, multiplier par 0,55

Influence du vent arrière :

- ajouter 10 % par tranche de 2 kt supplémentaire.

Piste sèche en herbe :

- ajouter 15 %.

Team 5: LFLG to LSGL with F-HCEN

Chargement du F-HCEN

sièges avant (kg)

sièges arrière (kg)

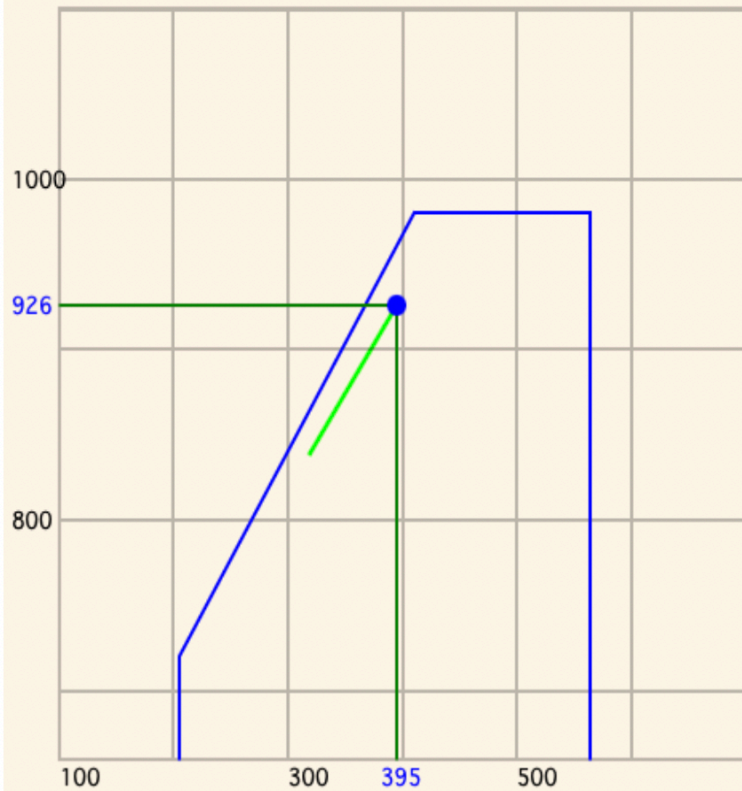
bagages (kg)

fuel 1 = 110 l.



valider

F-HCEN



© A.Pêcher, ACD, 4 juillet 2021

Team 5: LFLG to LSGL with F-HCEN

Fuel

93NM @114kts = 49minutes

+10 minutes Takeoff

+10 minutes Landing

+30 minutes Regulation

+30 minutes Captain Reserve

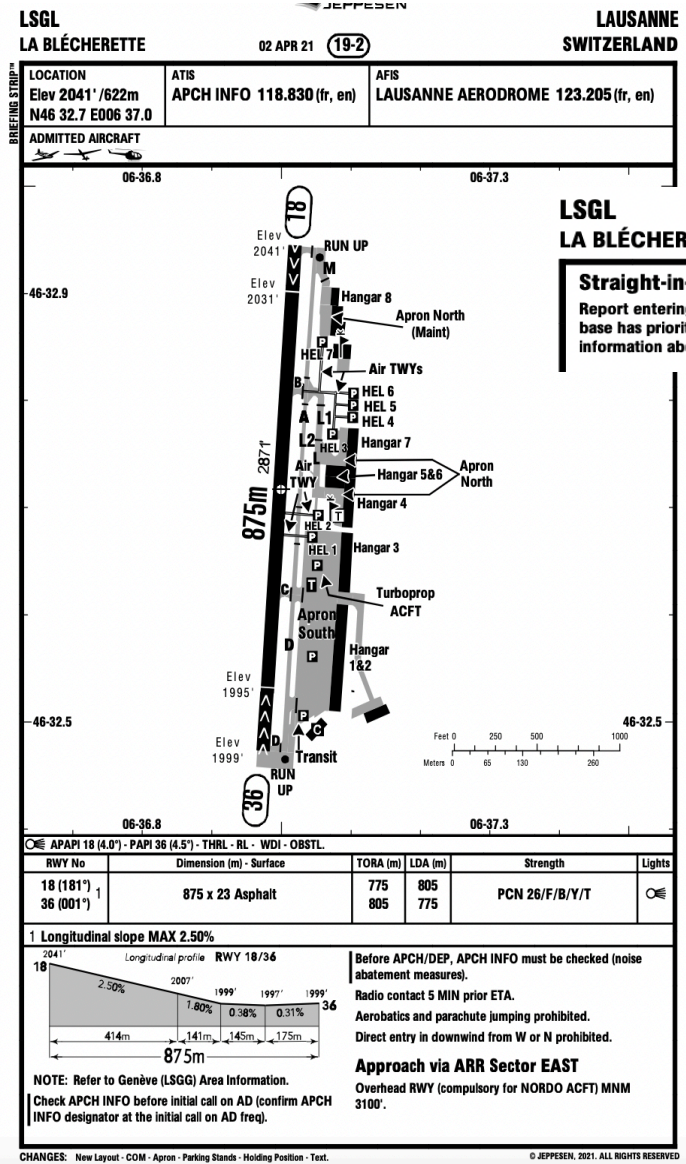
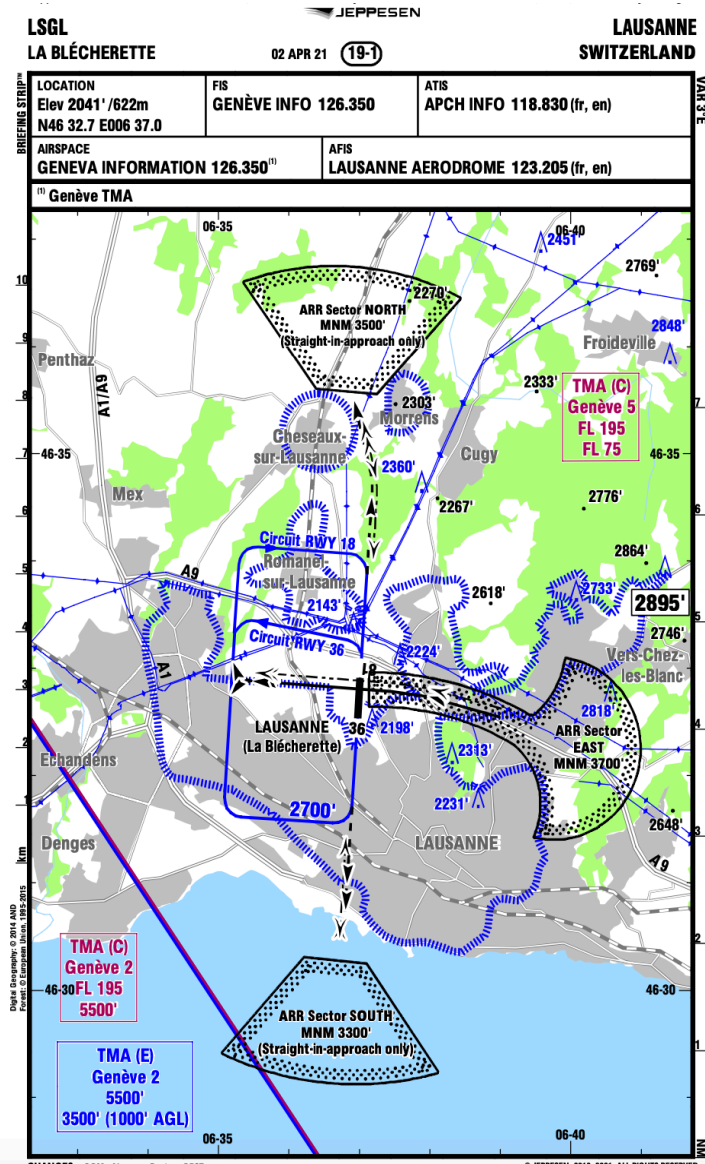
= 129minutes @21,2l/h = 46 litres

Return fuel tank = 110l - TripFuel

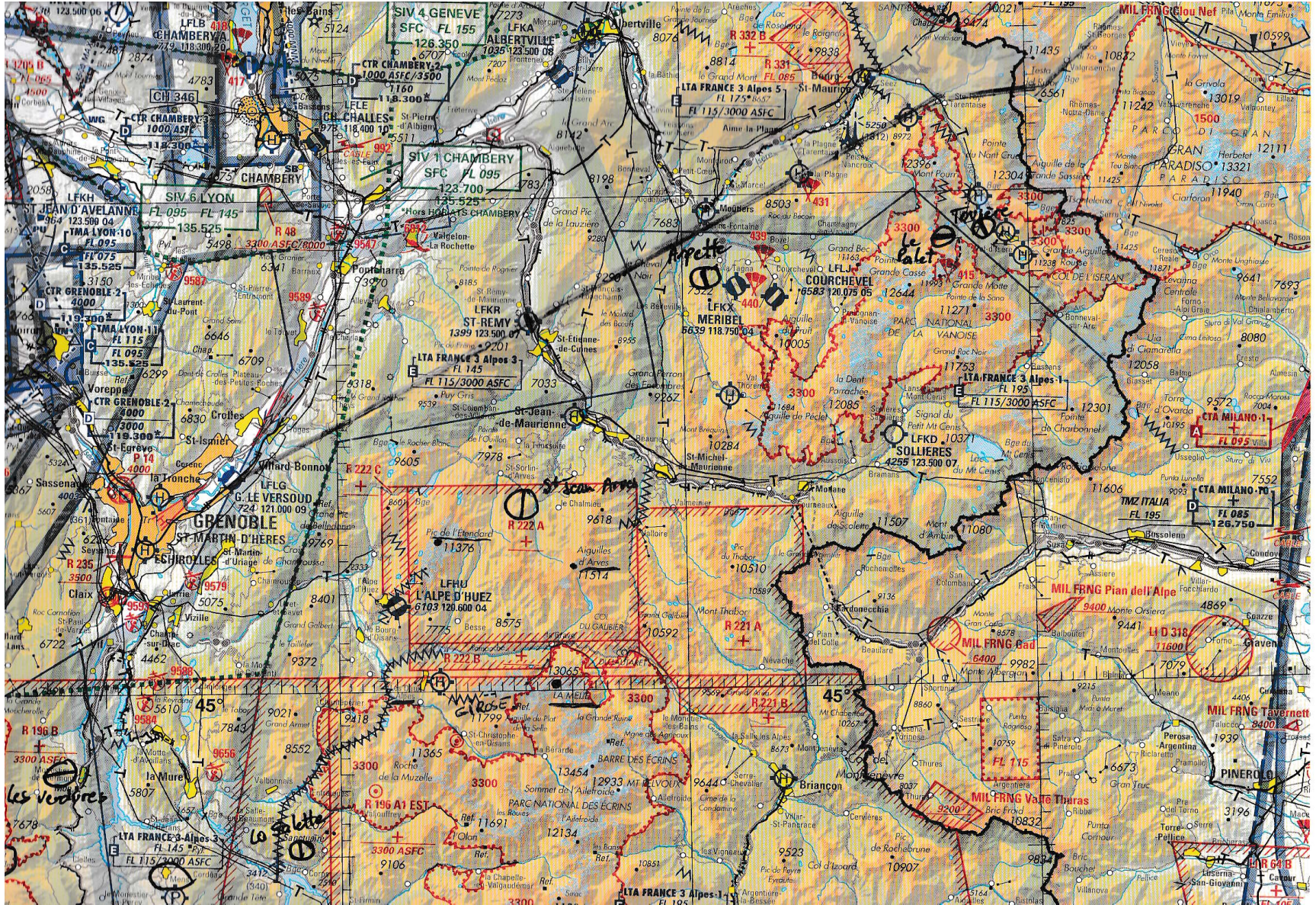
TripFuel = 69min = 25l

110 - 25 = 85l

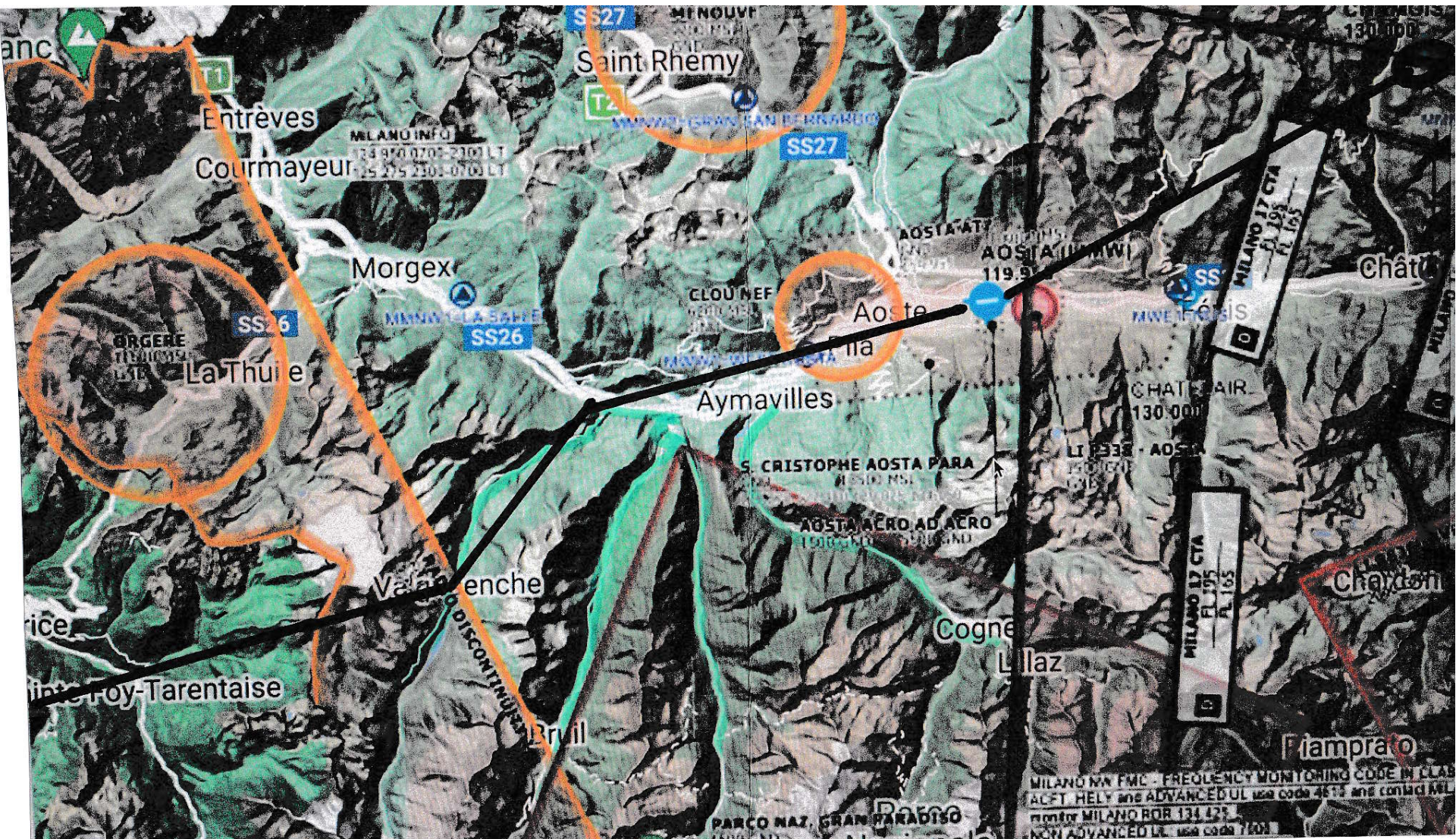
Team 5: LFLG to LSGL with F-HCEN



Team 7: LFLG to Chamois with F-GSCD



Team 7: LFLG to Chamois with F-GSCD



Team 7: LFLG to Chamois with F-GSCD

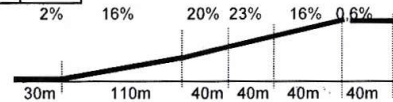
QFU atterrissage	07	CHAMOIS Valtournanche (I) - 11020-Val d'Aoste
décollage	25	
TDP main	G	

approche **ne pas survoler le village**
 piste **300**
 profil **plat à 4% sur 80m puis env, 20%**
 observations **Eviter décollages entre 12h30 et 14H00**
 Vent arrière à l'ATT l'après-midi en été

- ▣ manche à air
- ▣ balisage
- ▣ abri avion
- ▣ gîte
- ▣ repas

OUI	NON
X	
	X
	X
X	
X	

voir office du tourisme



Aviation English Master Class



- Next Week: Radio Communications rules for Ground and taxi
- Practice Radio Communications for Ground and Controller.