



Aéro Club Dauphiné  
**Aviation English Master Class**  
Session 2

James Crowley, Albert Scius  
and the ACD FCL055 team

<http://crowley-coutaz.fr/jlc/FCL055>

# Presentation of New Participants



(deleted for privacy)

# Presentation of New Participants

(2 minutes par participant)



In English, please state:

- 1) Your name and total number of hours
- 2) When and where did you first learn to fly
- 3) Your current favorite aircraft.
- 4) What would you like to gain from this class?
- 5) What aircraft type, departure and destination would you like to use for the exercises.

# Radio Practice Speaking Order

No.	Pilots
1	JA
2	HBF
3	FB
4	JCE
5	JG
6	JYL
7	HM
8	FM
9	PP
10	GRP
11	JT1
12	JT2
13	JPT
	<b>ATC</b>
1	MP
2	MS

# Session Planning (\*tentative\*)



- 17 March The FCL055 Rating, Course structure, Presentation of Participants, Information resources, ATIS, AWOS and ASOS
- 24 March Formation of flight crews, Aeronautical Communications, ATIS practice, Sample preflight briefings
- 31 March Preflight Briefings: Aircraft, Airspace, NOTAMS, Weather, Route Practice Departure clearances, Taxi and Ground movement procedures
- 7 April Airfield Briefings, Radio Practice: taxi and takeoff, War stories,
- 14 April\* Airspace Briefings, Radio Practice Closed Patterns (touch and goes) War stories and experience, Example Enroute briefing
- 21 April\* Enroute briefings, Radio Practice: Enroute Position Reporting. Abnormal and Emergency Situations, 100 Hamburgers
- 28 April Emergency Situation Briefings, Radio Practice: emergency situations, Human Factors, war stories
- 5 May Arrival Briefings, Radio Practice: Arrival, Landing, Fuel and Parking War Stories.
- 12 May FCL 055 VFR practice Exam

\*Jim in Texas

# Aviation English Master Class



- Formation of Flight Teams
- Radio Communications: Numbers
- ATIS Practice
- Assignment for Next Week: Preflight Briefings

# Flight Crews and Trip



Deleted for privacy reasons

# Aeronautical Radiotelephony Communications

(<http://www.apprendreavoler.fr/phraseo/Files/Other/phraseoEngV1.4.pdf>)

www.apprendreavoler.com

Aéroclub du Dauphiné



## Aeronautical Radiotelephony Communications for VFR pilots

Foreword .....	3
Transmitting technique .....	3
Transmission of letters .....	3
Transmission of numbers .....	4
Transmission of time .....	5
Standard words and phrases .....	6
Call signs for aeronautical stations .....	7
Aircraft call signs .....	7
Establishment and continuation of communications .....	8
Transfer of communications .....	9
Read-back requirements .....	10
Test procedures .....	11
Flight plans .....	11
Departure information and engine start up .....	12
Taxi instructions .....	12
Take-off procedures .....	14
VFR departure .....	15
Climb and descent instructions .....	16
Level instructions .....	17
Traffic information .....	18
Secondary Surveillance Radar - Transponder .....	18
ATS Surveillance .....	19
Position reporting .....	19
VFR arrival .....	21
Final approach and landing .....	21
Go around .....	22
Traffic circuit .....	22
After landing .....	23
Essential aerodrome information .....	24
Precision Radar Approach .....	24
Radar assistance to aircraft with radio communications failure .....	25
Distress messages .....	26
Urgency messages .....	27
Transmission of meteorological and other aerodrome information .....	28

Based on:

- ICAO - Manual of Radiotelephony Doc 9432 AN/925 Fourth Edition - 2007
- ICAO - Air Traffic Management Doc 4444-ATM/501 Fifteenth Edition - 2007



# Aeronautical Radiotelephony Communications

(<http://www.apprendreavoler.fr/phraseo/Files/Other/phraseoEngV1.4.pdf>)

... numbers ....[for]....altitude, cloud height, visibility and runway visual range (RVR) , which contain whole hundreds and whole thousands, shall be transmitted by pronouncing each digit in the number of hundreds or thousands followed by the word HUNDRED or THOUSAND as appropriate.

Combinations of thousands and whole hundreds shall be transmitted by pronouncing each digit in the number of thousands followed by the word THOUSAND followed by the number of hundreds followed by the word HUNDRED.

Chiffre	Prononciation normalisée internationale
0	Zi ro
1	Ouann
2	Tou
3	Tri
4	Fo eur
5	Fa ĩf
6	Siks
7	Sèv n
8	Eĭt
9	Naĭ neur
.	Dè si mal
00	Hun dréd
000	Taou zend

<b>Altitude</b> 800	transmitted as eight hundred
3 400 12 000	three thousand four hundred one two thousand
<b>cloud height</b> 2 200 4 300	transmitted as two thousand two hundred four thousand three hundred
<b>Visibility</b> 1 000 700	transmitted as visibility one thousand visibility seven hundred
<b>runway visual range</b> 600 1 700	transmitted as RVR six hundred RVR one thousand seven hundred

# Aeronautical Radiotelephony Communications

(<http://www.apprendreavoler.fr/phraseo/Files/Other/phraseoEngV1.4.pdf>)

All numbers, except as specified above, shall be transmitted by pronouncing each digit separately

<b>aircraft call signs</b> AF 238 Olympic 242	<b>transmitted as</b> Air France two three eight Olympic two four two
<b>flight levels</b> FL 180 FL 200	<b>transmitted as</b> flight level one eight zero flight level two zero zero
<b>Headings</b> 100 degrees 080 degrees	<b>transmitted as</b> heading one zero zero heading zero eight zero
<b>wind direction and speed</b> 200 degrees 25 knots  160 degrees 18 knots gusting 30 knots	<b>transmitted as</b> wind two zero zero degrees two five knots  wind one six zero degrees one eight knots gusting three zero knots
<b>transponder codes</b> 2400 4203	<b>transmitted as</b> squawk two four zero zero squawk four two zero three
<b>Runway</b> 27 30 09	<b>transmitted as</b> runway two seven runway three zero runway zero niner
<b>altimeter setting</b> 1010 1000	<b>transmitted as</b> QNH one zero one zero QNH one zero zero zero

# Aeronautical Radiotelephony Communications

FREQUENCIES: All six digits... should be used to identify the transmitting channel in ... communications, except in the case of both the fifth and sixth digits being zeros, in which case only the first four digits should be used.

Channel	Transmitted as
<b>118.000</b>	ONE ONE EIGHT DECIMAL ZERO
<b>118.005</b>	ONE ONE EIGHT DECIMAL ZERO ZERO FIVE
<b>118.010</b>	ONE ONE EIGHT DECIMAL ZERO ONE ZERO
<b>118.025</b>	ONE ONE EIGHT DECIMAL ZERO TWO FIVE
<b>118.050</b>	ONE ONE EIGHT DECIMAL ZERO FIVE ZERO
<b>118.100</b>	ONE ONE EIGHT DECIMAL ONE

Time: only the minutes of the hour should be required.

Each digit should be pronounced separately.

The hour should be included [only] when [there is] possibility of confusion.

<b>09:20</b>	TOO ZERO or ZERO NINER TOO ZERO
<b>16:43</b>	FOUR THREE or ONE SIX FOUR THREE

# Automatic terminal information service

## ATIS (ICAO)

Airfield, identifier, Time (UTC), [Approach], Runway in use, Runway Condition, [Significant NOTAMS], Wind speed and direction, Visibility, Cloud cover, Temperature, Dew point, QNH, QFE, Inform [Airfield] [Station] on first contact that you have information [Identifier]

## ATIS (FAA)

Airfield, identifier, Time (UTC), Wind speed and direction, Visibility, Cloud cover, Temperature, Dew point, QNH, QFE, [Approach], [Density Altitude], Advise on initial contact that you have information [Identifier]

(FAA ATIS may contain Air Defense Systems alert and advisory, reported unauthorized laser , instrument or visual approaches in use, departure runways, taxiway closures, new or temporary changes to runway length, runway condition and codes, other optional information, and advisories.)

# European ATIS examples:



LFLG-ATIS-I-19mar2022



LFLS-ATIS-G-20mar2012



LFBD-ATIS-I-19mar2022



ATIS EDSB Baden KILO



EGJJ-ATIS-F-Jersey-19mar2022



ATIS Cambridge CHARLIE



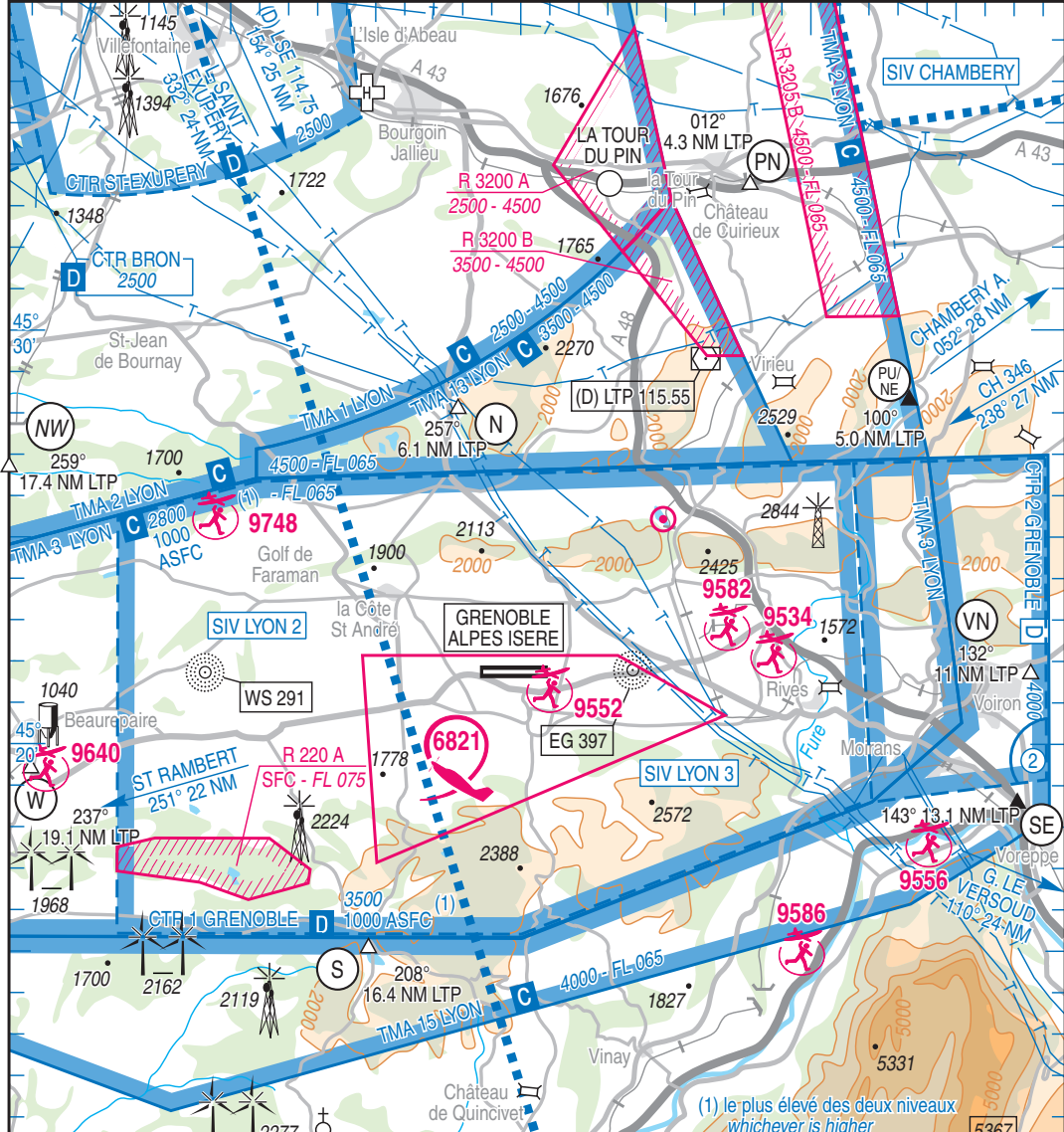
Visual approach

Chart data on  
Public air traffic  
09 SEP 2021

ALT AD : 1302 (47 hPa)  
LAT : 45 21 47 N  
LONG : 005 19 58 E  
AD 2 LFLS APP 01

			<b>ALT AD : 1302 (47 hPa)</b>	<b>LFLS</b>
			LAT : 45 21 47 N	VAR : 2°E (20)
			LONG : 005 19 58 E	

ATIS : 133.855 ☎ 04 85 88 09 00  
 APP : LYON Approche / Approach 125.430  
 TWR : 119.300  
 GND (SOL) : 121.930 Absence ATS : A/A (119.300) FR seulement / only. ILS/DME RWY 09 SG 109.300



(1) le plus élevé des deux niveaux whichever is higher

# APPROCHE A VUE

Visual approach

Ouvert à la CAP  
Public air traffic  
04 NOV 21

# BORDEAUX MERIGNAC

AD 2 LFBD APP

ALT AD : 166 (6 hPa)  
LAT : 44 49 43 N  
LONG : 000 42 55 W  
LFBD  
VAR : 0° (20)

# MOUVEMENTS A LA SURFACE

Surface movements

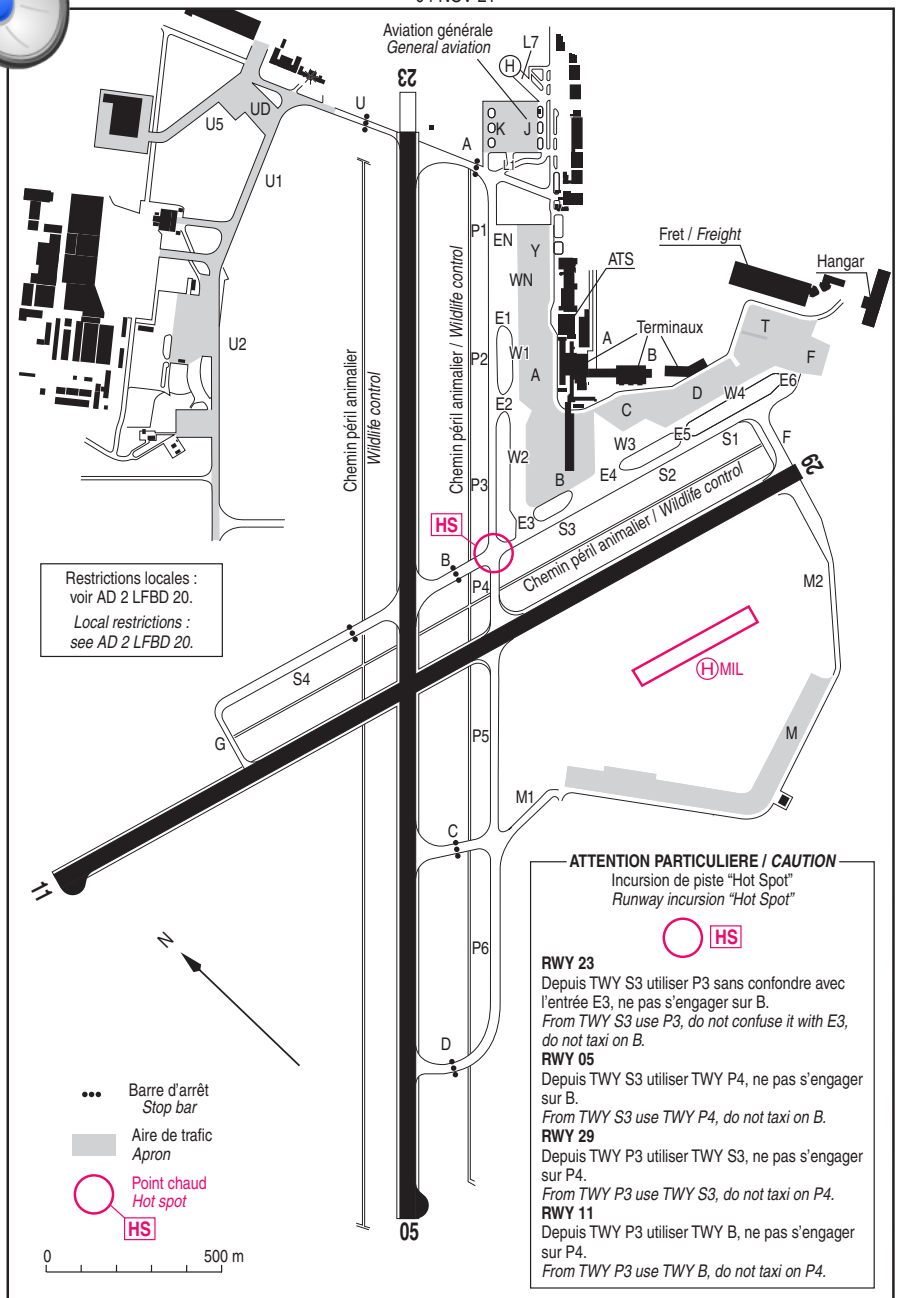
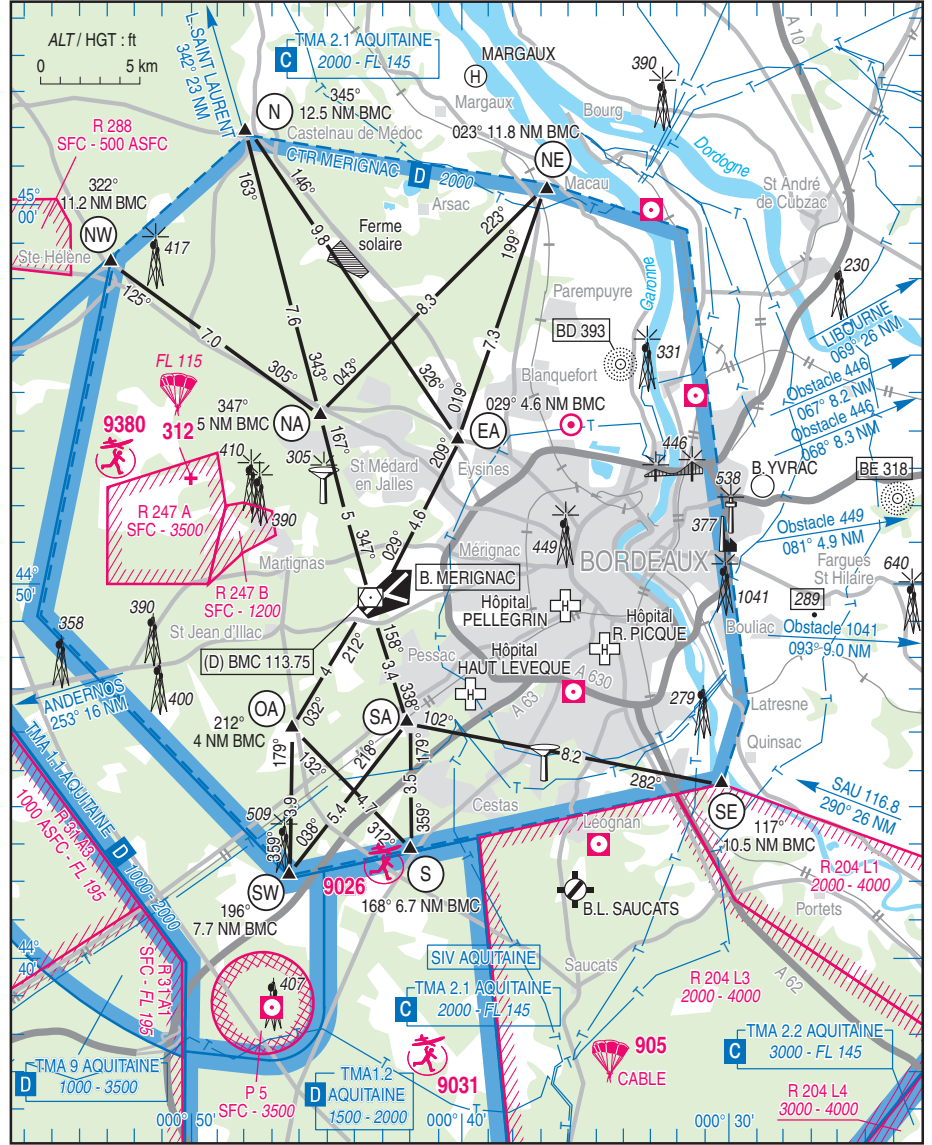
04 NOV 21

# BORDEAUX MERIGNAC

AD 2 LFBD GMC 01

FIS : AQUITAINE Information 120.575  
ATIS : 131.155 ☎ 05 57 92 81 04  
APP : AQUITAINE Approche / Approach 129.875 - 126.730 (s)  
TWR : 118.300  
GND (Sol) : 121.900 - 121.730 sur instruction CTL / on ATC clearance

ILS/DME RWY 23 BD 110.3  
ILS/DME RWY 29 BEI 111.15



Restrictions locales : voir AD 2 LFBD 20.  
Local restrictions : see AD 2 LFBD 20.

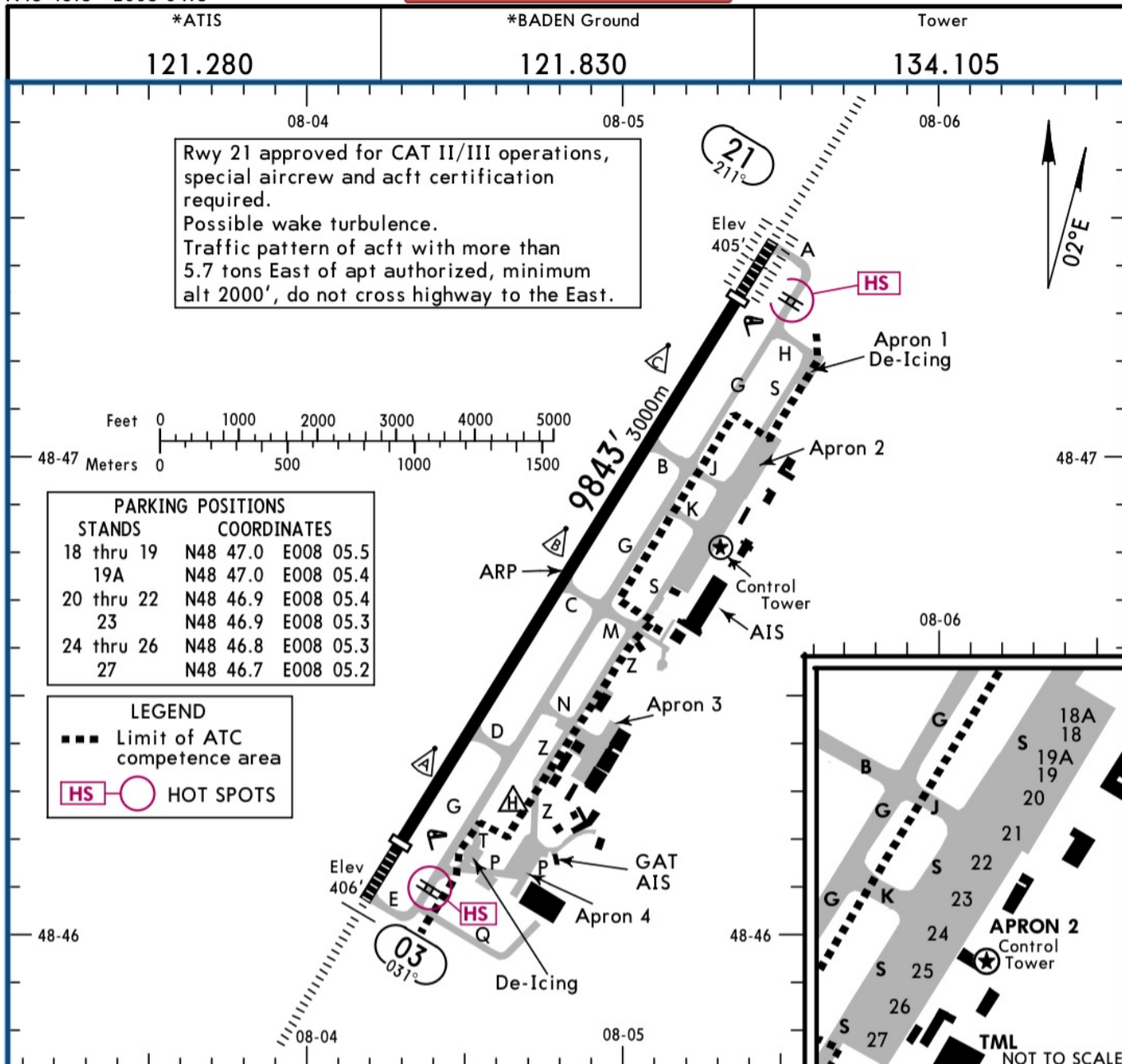
**ATTENTION PARTICULIERE / CAUTION**  
IncurSION de piste "Hot Spot"  
Runway incursion "Hot Spot"

**RWY 23**  
Depuis TWY S3 utiliser P3 sans confondre avec l'entrée E3, ne pas s'engager sur B.  
From TWY S3 use P3, do not confuse it with E3, do not taxi on B.

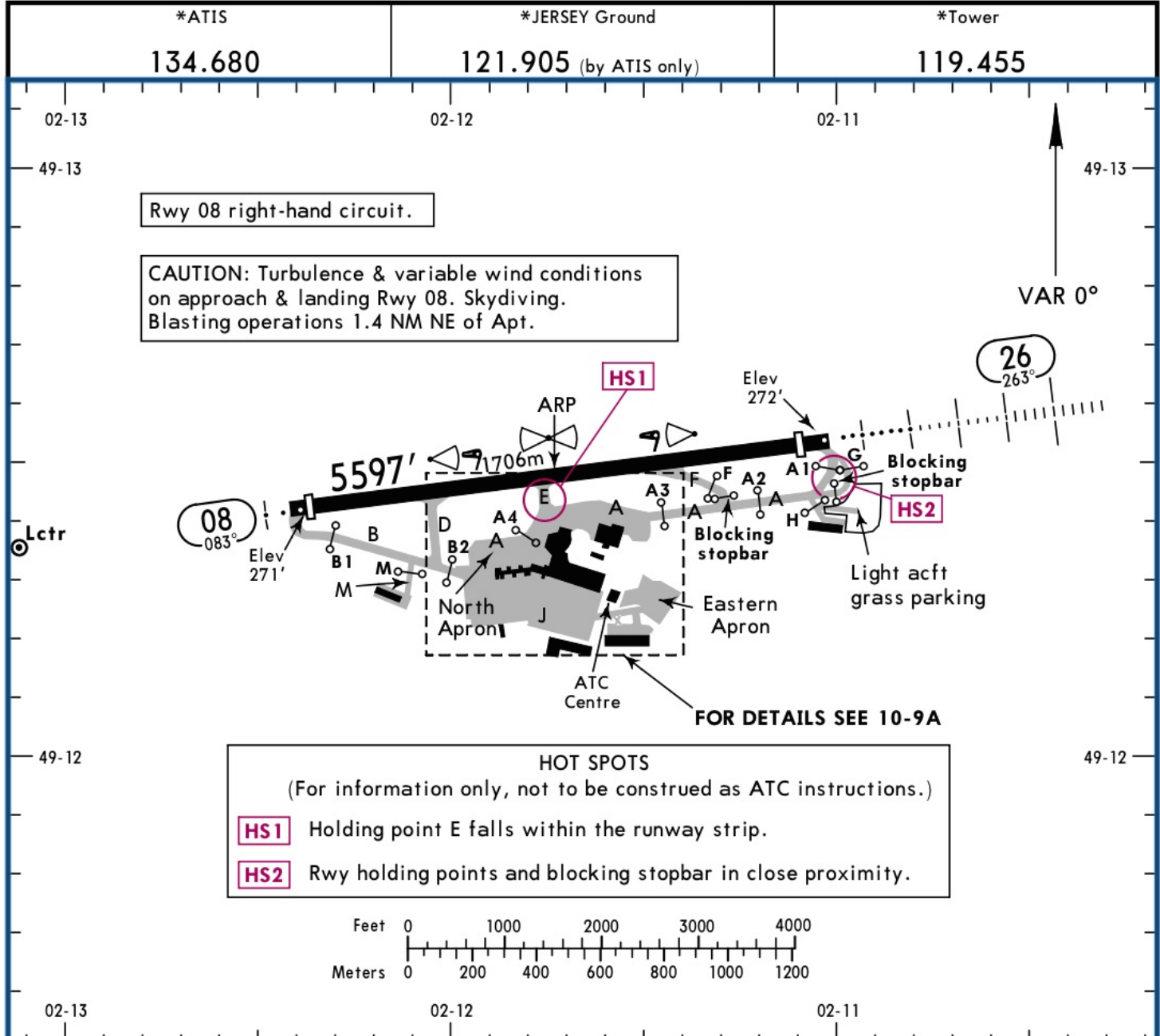
**RWY 05**  
Depuis TWY S3 utiliser TWY P4, ne pas s'engager sur B.  
From TWY S3 use TWY P4, do not taxi on B.

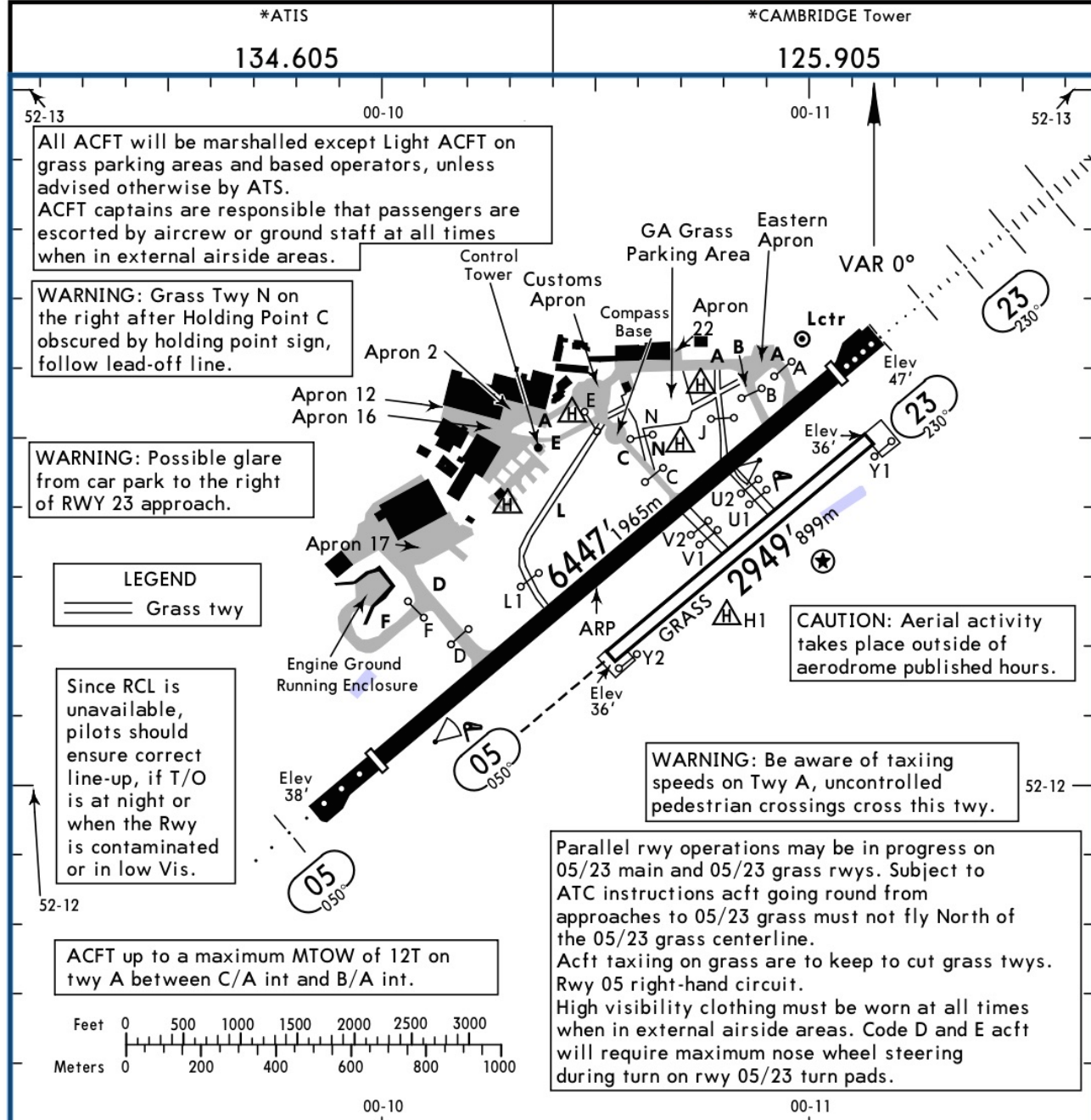
**RWY 29**  
Depuis TWY P3 utiliser TWY S3, ne pas s'engager sur P4.  
From TWY P3 use TWY S3, do not taxi on P4.

**RWY 11**  
Depuis TWY P3 utiliser TWY B, ne pas s'engager sur P4.  
From TWY P3 use TWY B, do not taxi on P4.









\*ATIS  
134.605

\*CAMBRIDGE Tower  
125.905

52-13 00-10 00-11 52-13

All ACFT will be marshalled except Light ACFT on grass parking areas and based operators, unless advised otherwise by ATS. ACFT captains are responsible that passengers are escorted by aircrew or ground staff at all times when in external airside areas.

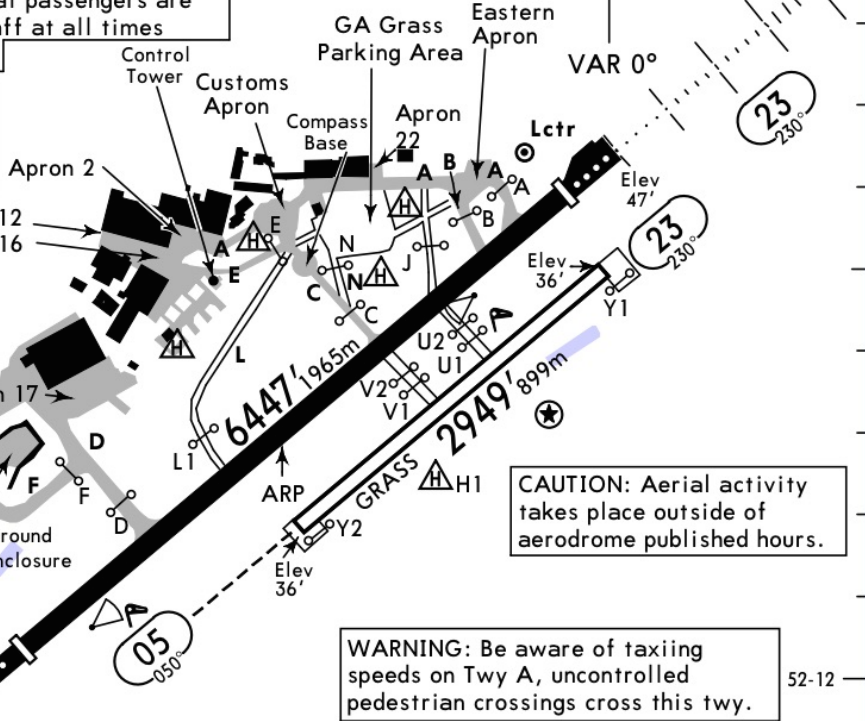
WARNING: Grass Twy N on the right after Holding Point C obscured by holding point sign, follow lead-off line.

WARNING: Possible glare from car park to the right of RWY 23 approach.

LEGEND  
Grass twy

Since RCL is unavailable, pilots should ensure correct line-up, if T/O is at night or when the Rwy is contaminated or in low Vis.

ACFT up to a maximum MTOW of 12T on twy A between C/A int and B/A int.



Parallel rwy operations may be in progress on 05/23 main and 05/23 grass rwys. Subject to ATC instructions acft going round from approaches to 05/23 grass must not fly North of the 05/23 grass centerline. Acft taxiing on grass are to keep to cut grass twys. Rwy 05 right-hand circuit. High visibility clothing must be worn at all times when in external airside areas. Code D and E acft will require maximum nose wheel steering during turn on rwy 05/23 turn pads.



# American ATIS and AWOS examples



KSAT-ATIS-Y-19Mar2022



AWOS KSAT



AWOS-5C1-Boerne Stage



AWOS Paris Texas KPRX



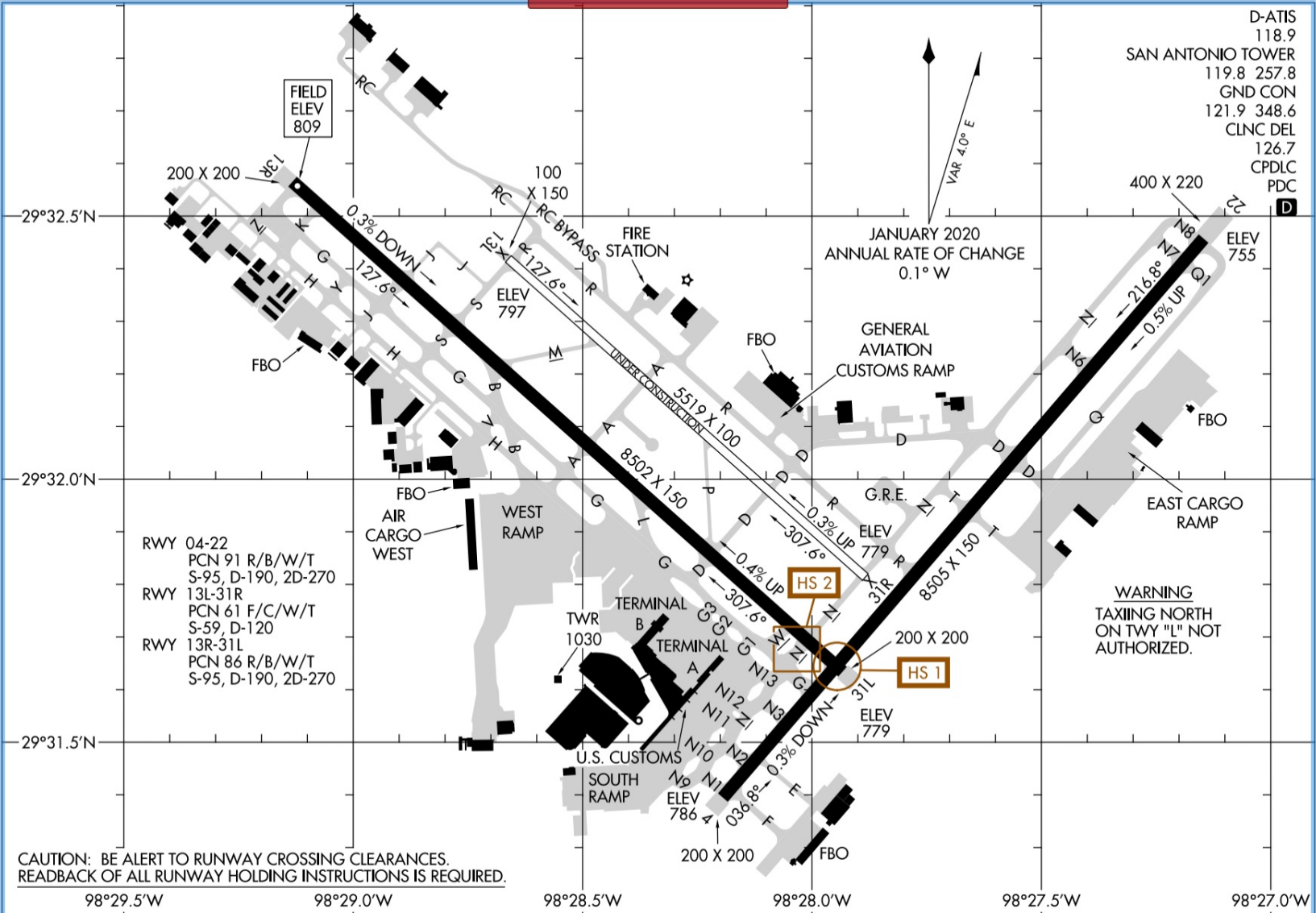


# KSAT – San Antonio Texas

Tap to view 19 NOTAMs

AIRPORT DIAGRAM  
22027

SAN ANTONIO INTL (SAT)  
SAN ANTONIO, TEXAS



CAUTION: BE ALERT TO RUNWAY CROSSING CLEARANCES.  
READBACK OF ALL RUNWAY HOLDING INSTRUCTIONS IS REQUIRED.

AIRPORT DIAGRAM  
22027

AL-369 (FAA)

SAN ANTONIO INTL (SAT)  
SAN ANTONIO, TEXAS

D-ATIS 118.9  
 SAN ANTONIO TOWER 119.8 257.8  
 GND CON 121.9 348.6  
 CLNC DEL 126.7  
 CPDLC  
 PDC

JANUARY 2020  
 ANNUAL RATE OF CHANGE  
 0.1° W

WARNING  
 TAXIING NORTH  
 ON TWY "L" NOT  
 AUTHORIZED.

98°29.5'W 98°29.0'W 98°28.5'W 98°28.0'W 98°27.5'W 98°27.0'W

29°32.5'N  
 29°32.0'N  
 29°31.5'N

# Assignment for 30 mar 2022

## Preflight Briefings



Each Team: Prepare to give a preflight briefing for your practice flight composed of:

- 1) Aircraft: Type, Call Sign, Performance.
- 2) Flight Plan: Departure, Destination, Airspace, Alternates, Route, Fuel
- 3) Weather: Information: Sources, Example: Current Conditions, Forecast conditions
- 4) NOTAMS: Source, Airfields, Airspace.

# Assignment for 30 mar 2022

## Preflight Briefings



Example:

Team 0: Jim Crowley

Trip: KSAT to KHDO with SR20 N-689PG

# Assignment for 30 mar 2022

## Preflight Briefings



Example:

Team 2: John Archer and Jean-Claude Estival

Trip: LFLG to LIMA with EUPA (Europa) F-PSCZ

# SR20 N689 PG





# SR20 N689 PG

2008 Cirrus SR20 (G3)

Serial Number 1889

Engine: Continental IO-360-ES (200 hp)

Avidyne Entegra Avionics

Dual GNS 430 GPS/NAV/COM WAAS receivers

STEC 55X Autopilot with Flight Director,

GTX 327 Transponder, GDL-88 ADSB-IN/OUT,

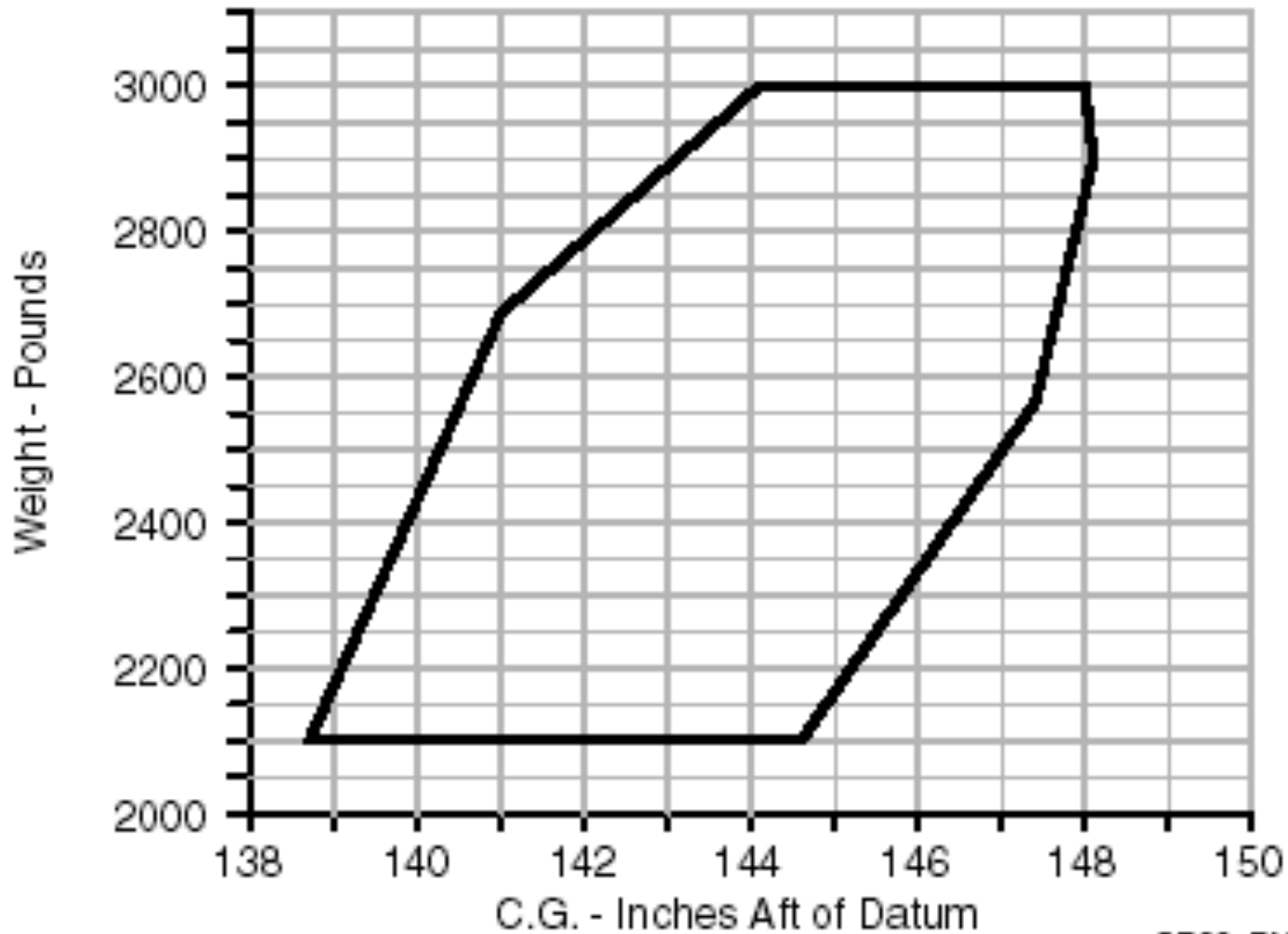
Skywatch Active Traffic System, Stormscope, XM

Weather



Texas Skies Aviation  
Boerne Stage Field (5C1)

# Weight and Balance



# Airspeeds

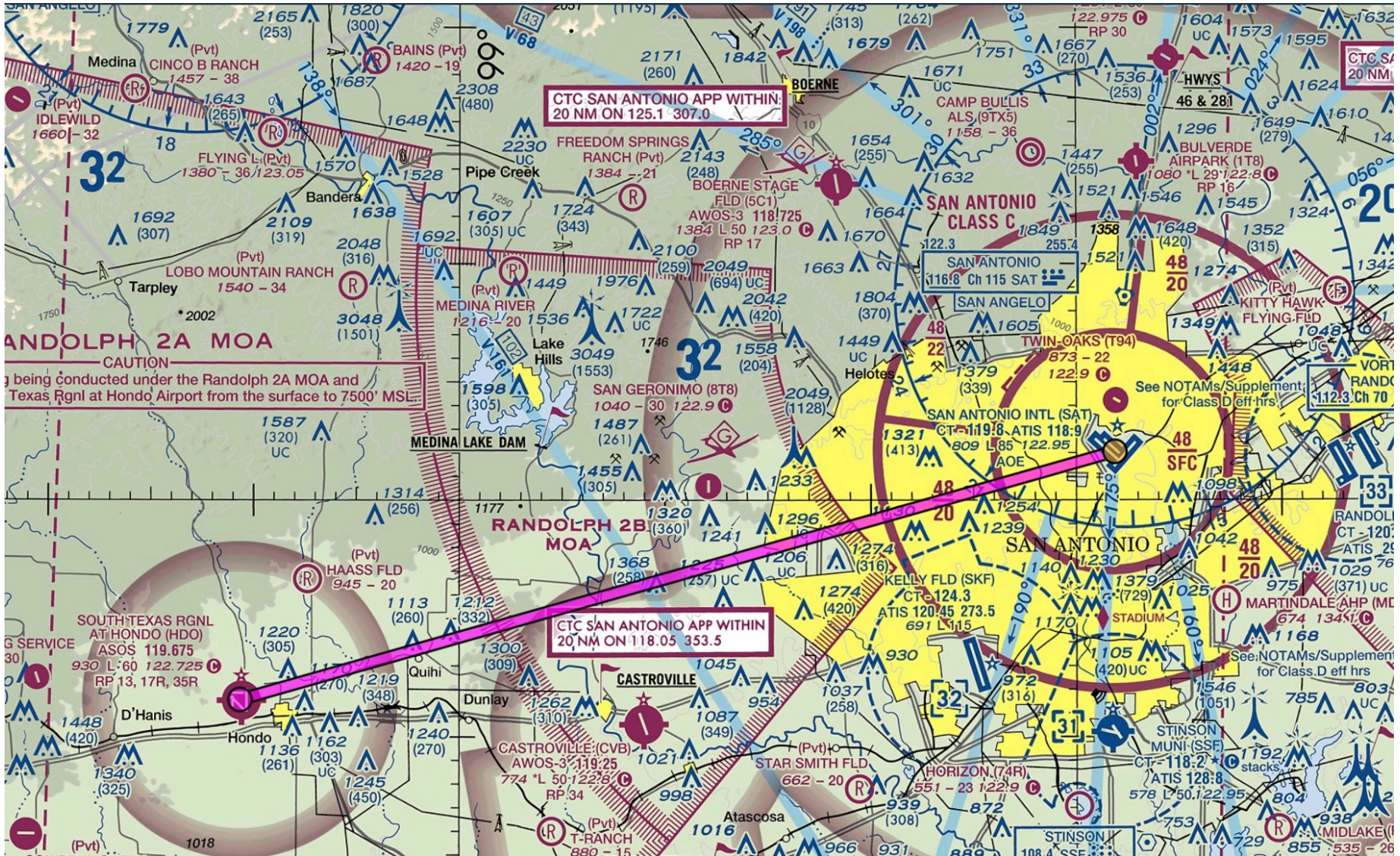


Airspeed	Knots	
Vs0	56	
Vs1	65	
Vr	67	
Vx	81	
Vapp	80	
Vgvideo	87	at 2500 lbs
Vy	96	
Vgslide1	96	at 3000 lbs
VCrusieclimb	105	
Vao	111	at 3000 lbs
Vfe0	100	Flaps 100%
Vfe0	120	flaps 50%
Va1	131	at 2200 lbs
Vpd	135	
Vno	165	
Vne	200	

Tkof	POH/CKLST
Flaps 50%	
Vr	67
Vx	91
Flaps up	
Vy	95
Cruise Climb	105

Landing	CheckList
Circ	85
Flaps 50	
App	80
Flaps 100	
App	75
Gear Up	Vsi >0
Vso	56

# KSAT to KHDO (39 Nm at 250°)

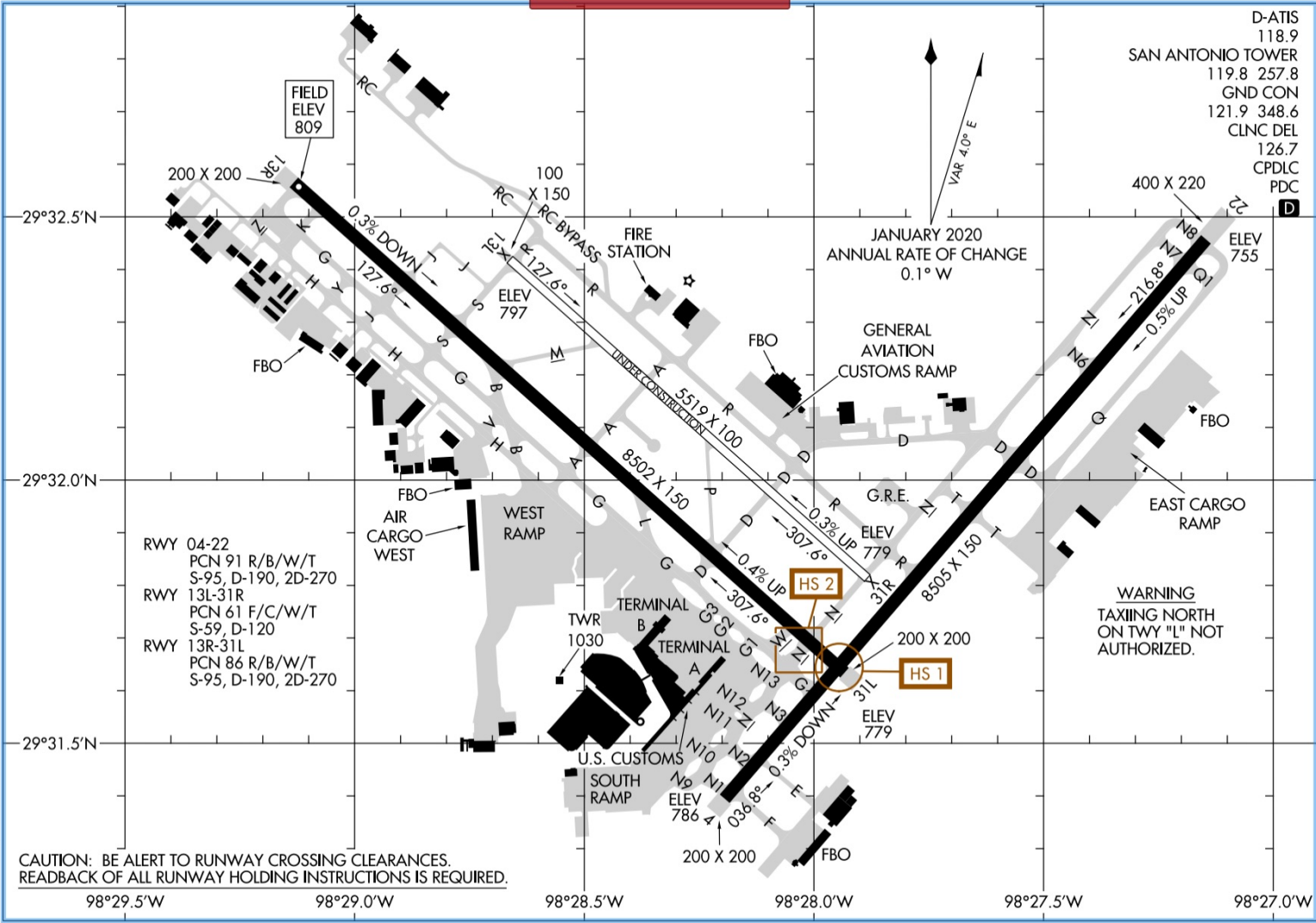


# KSAT

Tap to view 20 NOTAMS

AIRPORT DIAGRAM  
22027

SAN ANTONIO INTL (SAT)  
SAN ANTONIO, TEXAS



22027  
AIRPORT DIAGRAM

AL-369 (FAA)

SAN ANTONIO INTL (SAT)  
SAN ANTONIO, TEXAS

CAUTION: BE ALERT TO RUNWAY CROSSING CLEARANCES.  
READBACK OF ALL RUNWAY HOLDING INSTRUCTIONS IS REQUIRED.

24 FEB 2022 to 24 MAR 2022

D-ATIS 118.9  
SAN ANTONIO TOWER 119.8 257.8  
GND CON 121.9 348.6  
CLNC DEL 126.7  
CPDLC PDC

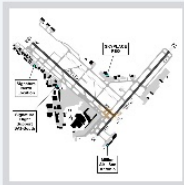
JANUARY 2020  
ANNUAL RATE OF CHANGE  
0.1° W

RWY 04-22  
PCN 91 R/B/W/T  
S-95, D-190, 2D-270  
RWY 13L-31R  
PCN 61 F/C/W/T  
S-59, D-120  
RWY 13R-31L  
PCN 86 R/B/W/T  
S-95, D-190, 2D-270

WARNING  
TAXIING NORTH  
ON TWY "L" NOT  
AUTHORIZED.

# KSAT





# KSAT: San Antonio Internati...

San Antonio, Texas, US

29°32'02"N/98°28'09"W

Sunrise, set: 07:32, 19:47 GMT-5



3D View

Taxiways

Nearby

Comments

FBOs

Flight category	<b>VFR</b>	ATIS	<b>118.9</b>
Elevation	<b>809' MSL</b>	Clearance	<b>126.7</b>
Circuit altitude	<b>1,809' MSL (est.)</b>	Ground	<b>121.9</b>
Fuel	<b>Jet A+, Jet A, 100LL</b>	Tower	<b>119.8</b>
Procedures	<b>ILS, GPS, LOC, RN...</b>	Appr, Dep	<b>Multiple</b>

Frequencies

Weather

Runways

Procedures

NOTAMs

Services

A/FD

More

Two runways closed by NOTAM >

Approach >

San Antonio Approach  
141° - 270°

118.05

Clearance >

San Antonio Approach

121.375

Common >

San Antonio Approach  
360° - 090°

124.45

Departure >

San Antonio Approach  
271° - 359°  
Initial Contact

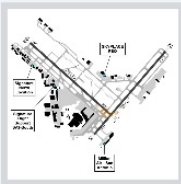
125.1

Emergency >

Flight Service >

San Antonio Approach  
091° - 140°

128.05



# KSAT: San Antonio Internati...

San Antonio, Texas, US

29°32'02"N/98°28'09"W

Sunrise, set: 07:32, 19:47 GMT-5



3D View

Taxiways

Nearby

Comments

FBOs

Flight category	<b>VFR</b>	ATIS	<b>118.9</b>
Elevation	<b>809' MSL</b>	Clearance	<b>126.7</b>
Circuit altitude	<b>1,809' MSL (est.)</b>	Ground	<b>121.9</b>
Fuel	<b>Jet A+, Jet A, 100LL</b>	Tower	<b>119.8</b>
Procedures	<b>ILS, GPS, LOC, RN...</b>	Appr, Dep	<b>Multiple</b>

Frequencies

**Weather**

Runways

Procedures

NOTAMs

Services

A/FD

More

**Two runways closed by NOTAM >**

**METAR** >

**VFR**

8m ago

**KSAT 231651Z 31010G19KT 10SM FEW250 18/M06 A3008 RMK AO2 SLP176 T01831056**

TAF >

Time **17:51 GMT+1**

MOS >

Wind **310° at 10 - 19 kts**

Forecast Discussion >

Visibility **10 sm**

Winds Aloft >

Clouds (AGL) **Few 25,000'**

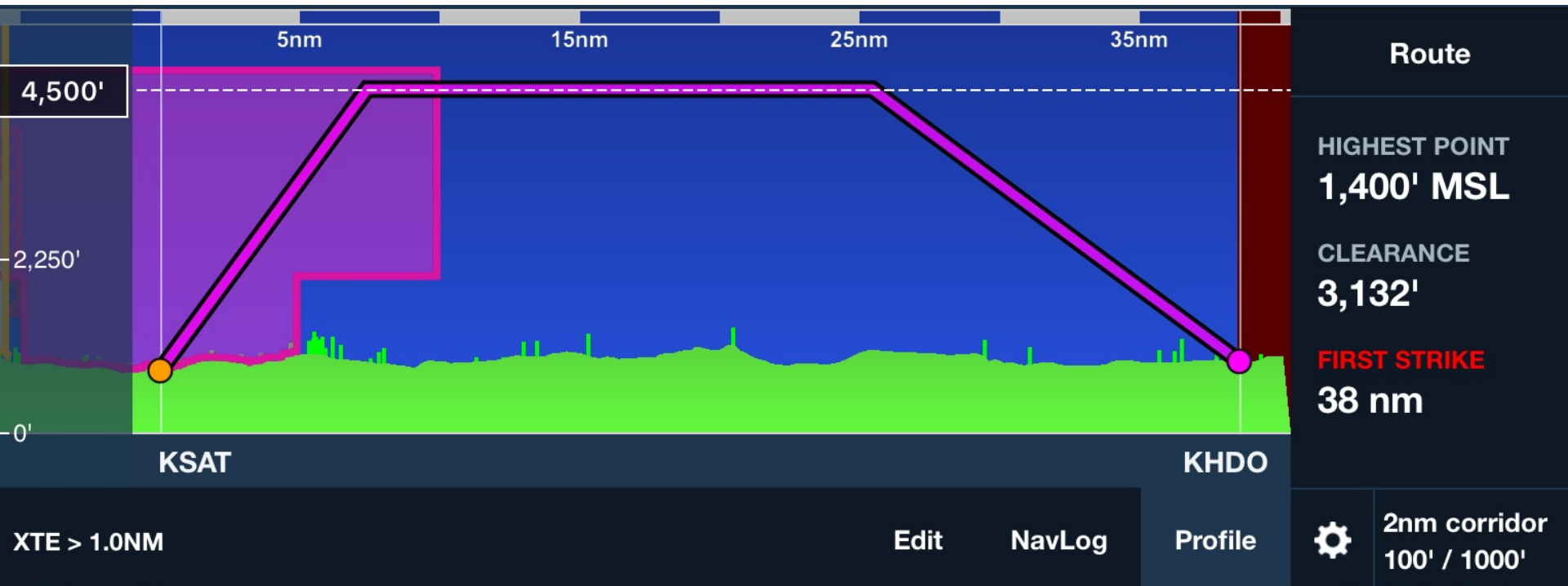
Temperature **18°C (64°F)**

Dewpoint **-6°C (21°F)**

Altimeter **30.08 inHg (1019 hPa)**



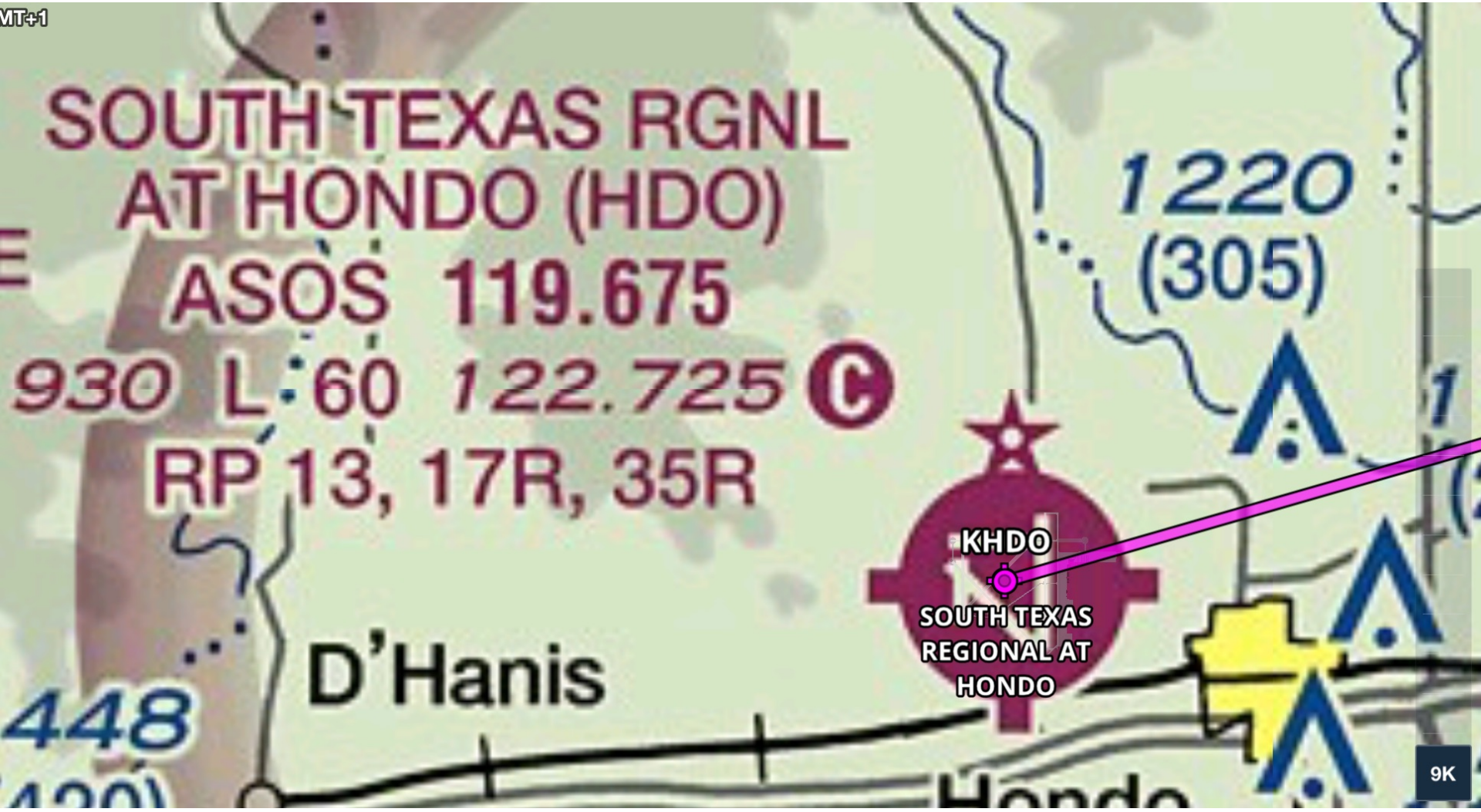
# KSAT – KHDO (4500 ft)



KSAT -> KHDO 259° M 39 Nm 5.3g 0h20m  
at 4500ft expect 4kts Headwind

# KHDO

MT+1



# KHDO

Apt Elev **930'**  
N29 21.5 W099 10.7



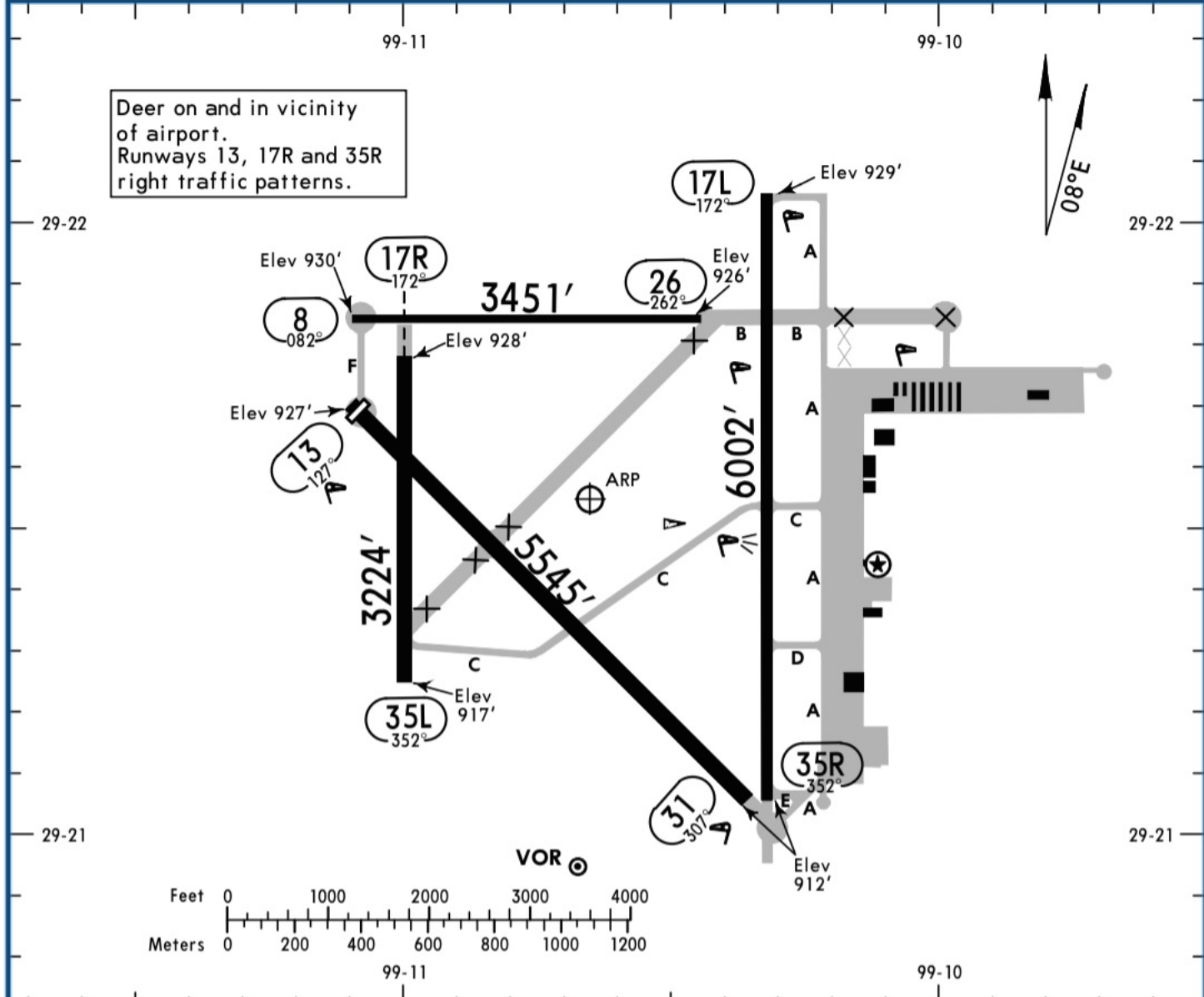
16 APR 21  
Eff 22 Apr (10-9)

# HONDO, TEXAS

SOUTH TEXAS REGL AT HONDO

ASOS <b>119.675</b>	HONDO MUN UNICOM CTAF <b>122.725</b>	HOUSTON Center (R) <b>134.95</b>
------------------------	---	-------------------------------------

Deer on and in vicinity of airport.  
Runways 13, 17R and 35R right traffic patterns.





N26160

# Session Planning (\*tentative\*)



- |           |  |
|-----------|--|
| 17 March  | The FCL055 Rating, Course structure, Presentation of Participants, Information resources, ATIS, AWOS and ASOS                      |
| 24 March  | Formation of flight crews, Aeronautical Communications, ATIS practice, Sample preflight briefings                                  |
| 31 March  | Preflight Briefings: Aircraft, Airspace, NOTAMS, Weather, Route Practice Departure clearances, Taxi and Ground movement procedures |
| 7 April   | Airfield Briefings, Radio Practice: taxi and takeoff, War stories,   |
| 14 April* | Airspace Briefings, Radio Practice Closed Patterns (touch and goes) War stories and experience, Example Enroute briefing           |
| 21 April* | Enroute briefings, Radio Practice: Enroute Position Reporting. Abnormal and Emergency Situations, 100 Hamburgers                   |
| 28 April  | Emergency Situation Briefings, Radio Practice: emergency situations, Human Factors, war stories                                    |
| 5 May     | Arrival Briefings, Radio Practice: Arrival, Landing, Fuel and Parking War Stories.   |
| 12 May    | FCL 055 VFR practice Exam  |

\*Jim in Texas